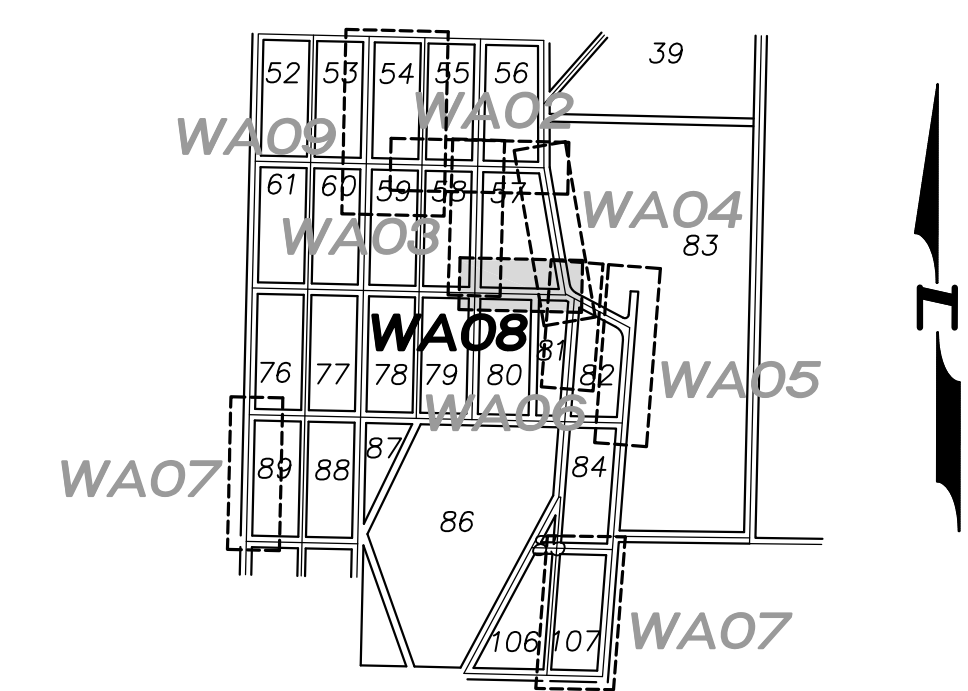
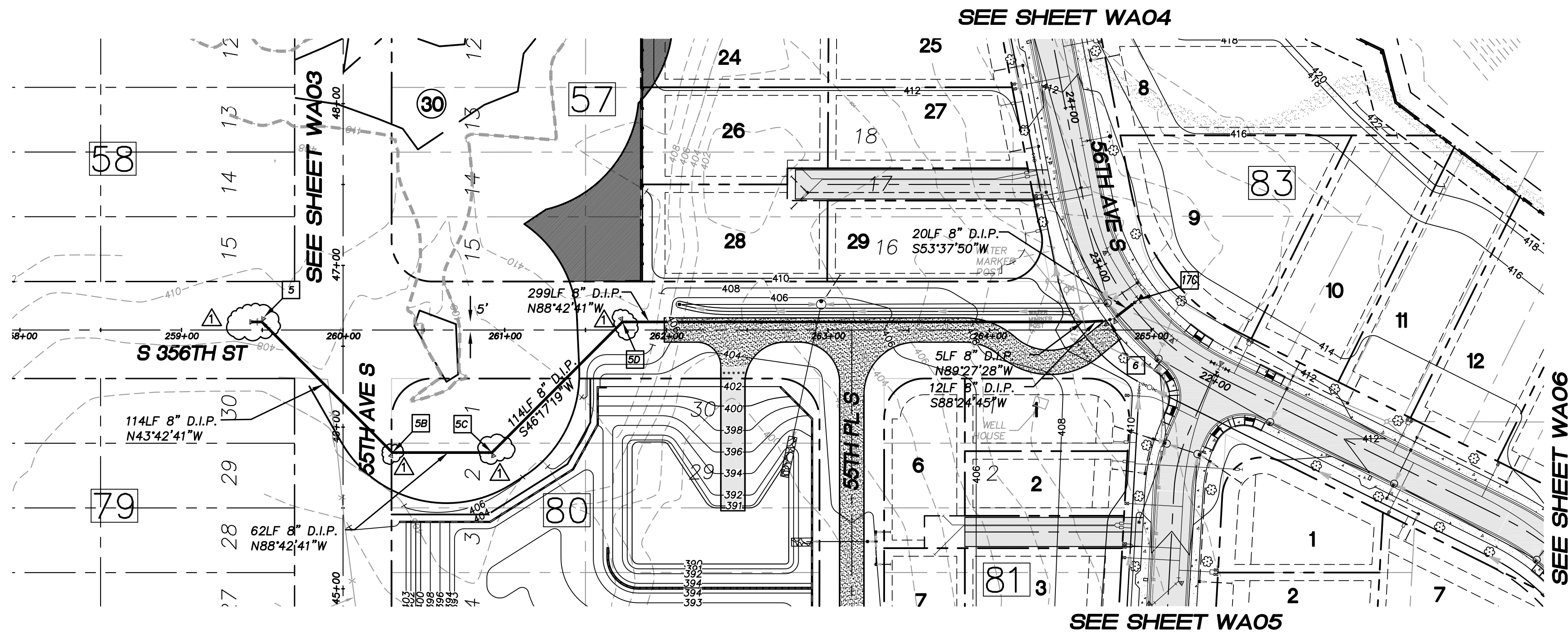
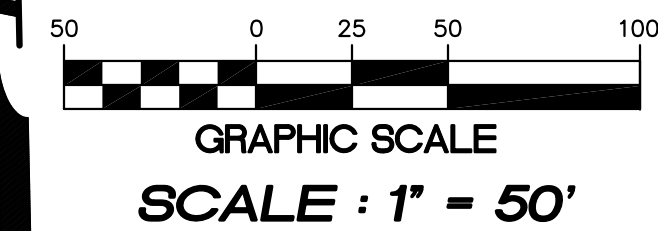


N.W. 1/4, SEC. 26, T. 21 N., R. 4 E., W.M.



KEY MAP
SCALE : 1" = 1000'



GRAPHIC SCALE
SCALE : 1" = 50'

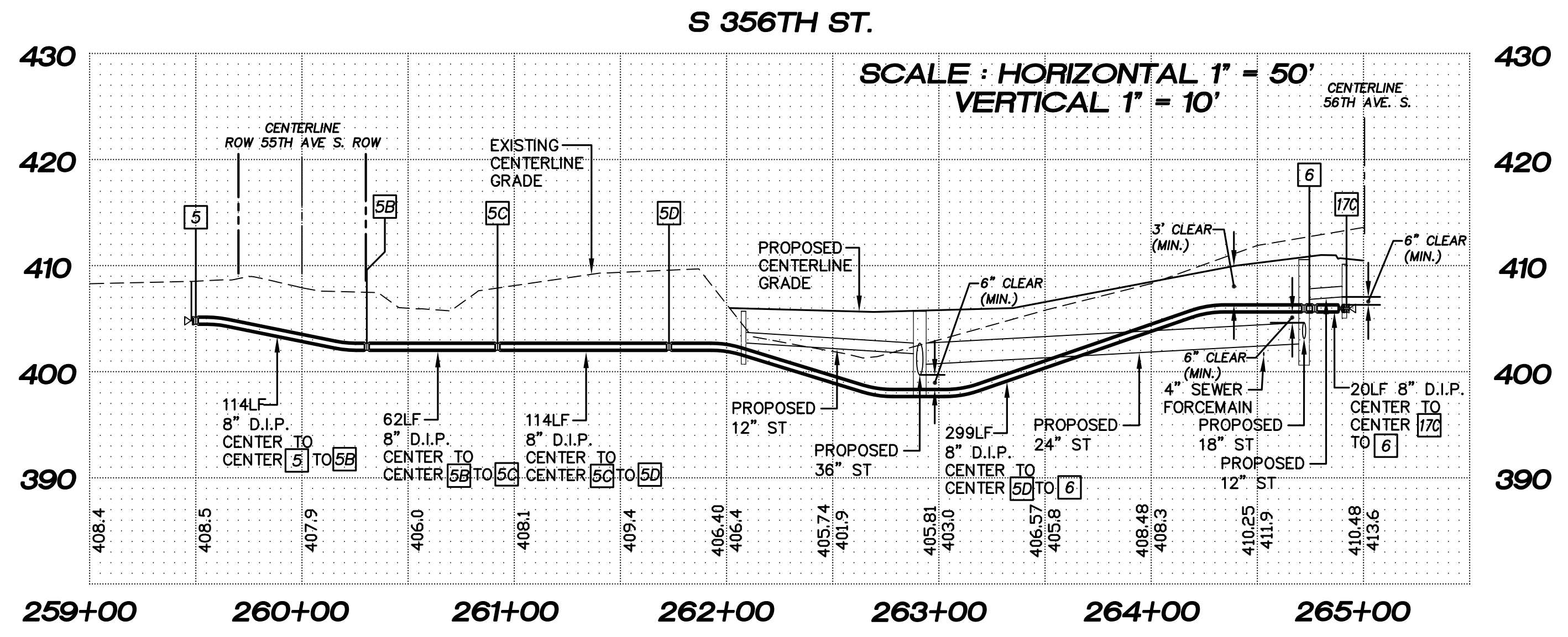
LAKEHAVEN UTILITY DISTRICT
 Water Plan Sewer Plan
 Dated _____
 APPROVED FOR CONSTRUCTION
 SUBJECT TO CHANGES NOTED
 The District's review is not a check of any dimension or quantities and will not relieve the Developer from responsibility for errors of any sort. No changes shall be made in the plans except by the consent of the District.
 General Manager/District Engineer Date
 This construction plan will expire one year from plan approval date, if construction has not commenced.

VERTICAL DATUM :
NAVD 88
 BENCH MARK :
KING COUNTY SURVEY CONTROL POINT No. 6905,
SW CORNER OF SECTION 27, T 24 N, R 4 E, W.M.,
CONCRETE MONUMENT WITH LEAD AND BRASS TACK,
SET 1.2 FEET BELOW GRADE, IN STANDARD KC MON. CASE.
ELEVATION = 367.06

LEGEND

- EX. ASPHALT PAVEMENT
- EX. GRAVEL PAVEMENT
- 6" A.C. EX. WATER MAIN
- NEW ASPHALT PAVEMENT
- NEW CONC. SIDEWALK
- 8" D.I. NEW WATER MAIN
- NEW GATE VALVE
- NEW F.H. ASSEMBLY
- NEW WATER BEND W/ CONC. BLOCKING
- NEW WATER TEE W/ CONC. BLOCKING
- NEW WATER METER
- 428- EX. CONTOUR
- 406- FINISHED CONTOUR
- 57 BLOCK NUMBER

- 5 259+42.24, 5.00' L (S. 356TH ST.)
1-8" 45° BEND (FLXMJ) W/ CONC. BLOCKING
1-8" GATE VALVES (FLXMJ)
1-8" PLUG (FL)
1-3" BLOWOFF ASSEMBLY
W/ CONC. BLOCKING
3'X3'X3" CONCRETE PROTECTIVE PAD
- 5A 259+49.74, 5.00' L (S. 356TH ST.)
1-8" 45° BEND (MJ)
W/ CONC. BLOCKING
- 5B 260+30.52, 75.77' R (S. 356TH ST.)
1-8" 45° BEND (MJ)
W/ CONC. BLOCKING
- 5C 260+92.10, 75.77' R (S. 356TH ST.)
1-8" 45° BEND (MJ)
W/ CONC. BLOCKING
- 5D 261+72.88, 5.00' L (S. 356TH ST.)
1-8" 45° BEND (MJ)
W/ CONC. BLOCKING
- 6 22+69.67, 20.00' R (56TH AVE. S.)
=264+74.45, 6.39' L (S. 356TH AVE S.)
1-8" 22 1/2° BEND (MXXFL)
1-8" 11 1/4° BEND (FLXMJ)
W/ CONC. BLOCKING
- 17C SEE SHEET WA04 MATCH POINT



NOTE :

1. ALL SEWER FORCEMAIN PIPES ARE DR-11 HDPE PIPES. THE SEWER FORCEMAIN SHALL HAVE 10' MINIMUM HORIZONTAL CLEARANCE BETWEEN WATERMAIN. WHEN CROSSING WITH WATERMAIN, THE SEWER FORCEMAIN SHALL CROSS UNDER AND KEEP MINIMUM 18" VERTICAL CLEARANCE FROM THE WATERMAIN. IF THE EXISTING WATERMAIN IS AC PIPE, IT SHALL BE REPLACED WITH SAME SIZE DUCTILE IRON PIPE 10 FEET EACH SIDE OF SEWER CROSSING BUT NO LESS THAN 2 FEET INTO BOTH TRENCH WALLS (NO CDF GRADLE ALLOWED).
2. WATERMANS DEPICTED IN PROFILE VIEW TO HAVE MINIMUM 3' COVER. WATERMAIN VALVE OPERATING NUT TO HAVE 12" COVER.
3. LOCATIONS OF EXISTING UTILITIES ARE BASED ON FIELD SURVEY DATA. POTHOLE/RESEARCH EXISTING WATERMAIN AND OTHER UTILITIES BEFORE CONSTRUCTION.
4. ALL NEW WATERMANS ARE DUCTILE IRON PIPES WITH MINIMUM CLASS 50.
5. ALL NEW SERVICES TO INDIVIDUAL LOTS ARE 1" (SERVICE & METER) W/ 3/4" x 3/4" REDUCER BUSHINGS. ALL WATER METERS TO BE INSTALLED BY LAKEHAVEN FOLLOWING COMPLETION OF NEW WATERMAIN CONSTRUCTION. UNDER SEPARATE APPLICATIONS, ANY WATER SERVICE CONNECTIONS PROPOSED FROM EXISTING WATERMAIN SHALL BE ENTIRELY INSTALLED BY LAKEHAVEN. DEVELOPER SHOULD SUBMIT APPLICATIONS FOR THESE 'FULL' SERVICE INSTALLATIONS TO LAKEHAVEN AT THE COMMENCEMENT OF CONSTRUCTION.
6. THE MINIMUM SEPARATION BETWEEN (PARALLEL PIPELINES) WATER MAIN ,WATER SERVICE LINE AND PRESSURE SEWER FACILITIES (MUST BE BELOW WATER MAIN OR WATER SERVICE) MUST BE MET, ARE AS FOLLOWS:
HORIZONTAL \geq 10' MEASURED EDGE TO EDGE VERTICAL \geq 18", MEASURED EDGE TO EDGE.
7. THE MINIMUM SEPARATION BETWEEN (CROSSING PIPELINES) WATER MAIN ,WATER SERVICE LINE AND PRESSURE SEWER FACILITIES (MUST BE BELOW WATER MAIN OR WATER SERVICE) MUST BE MET, ARE AS FOLLOWS:
VERTICAL \geq 18" MEASURED EDGE TO EDGE



15445 53RD AVE. S.
SEATTLE, WA 98188
PHONE: (206) 431-7970
FAX: (206) 388-1648
WEB SITE: PACENG.COM

Pacific
Engineering
Design, LLC
Civil Engineering and
Planning Consultants

LAKEHAVEN UTILITY DISTRICT PROJECT No. 6304025
PEPPER HILL ESTATES
 KING COUNTY, WA.
 FOR: HIGHLAND PACIFIC HOUSING GROUP I, LLC
 1420 5TH AVE SUITE 2200
 SEATTLE, WA 98101-5346
 PHONE: (206) 521-5979 FAX: (206) 254-2880

PROJECT NO.: 05052
 DRAWN BY: JGC
 ISSUE DATE: 07-31-07
 SHEET REV.: 03-26-2012

WATER MAIN
S. 356TH ST.
PLAN

05052WA08-WA08.DWG
WA08