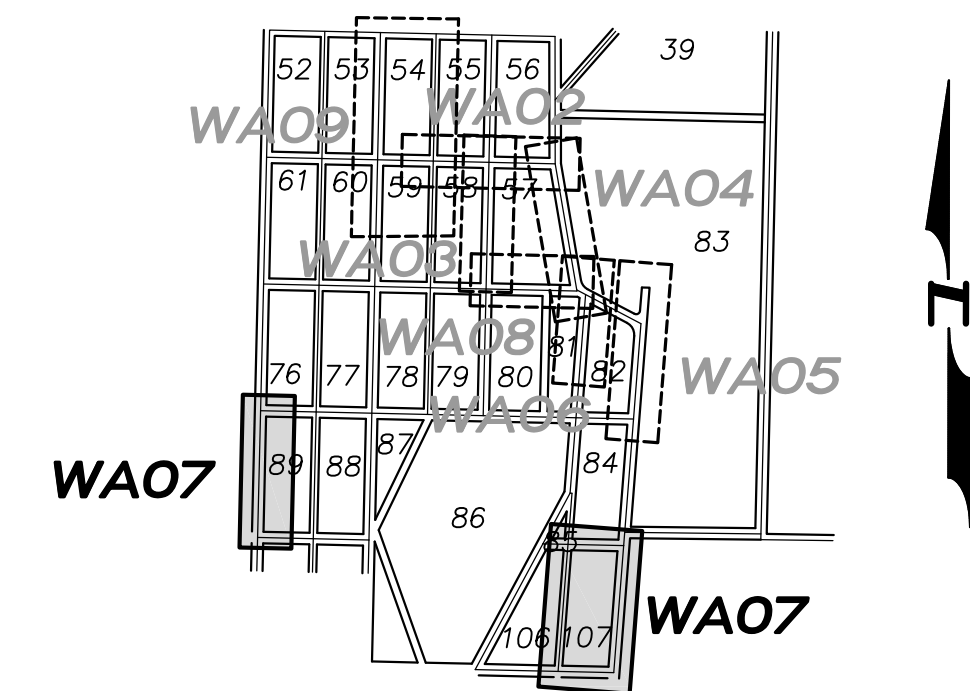
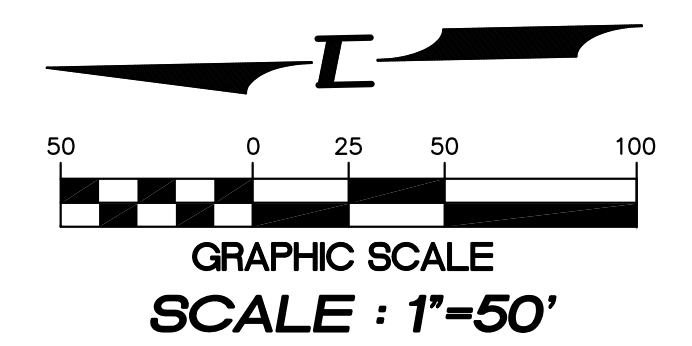
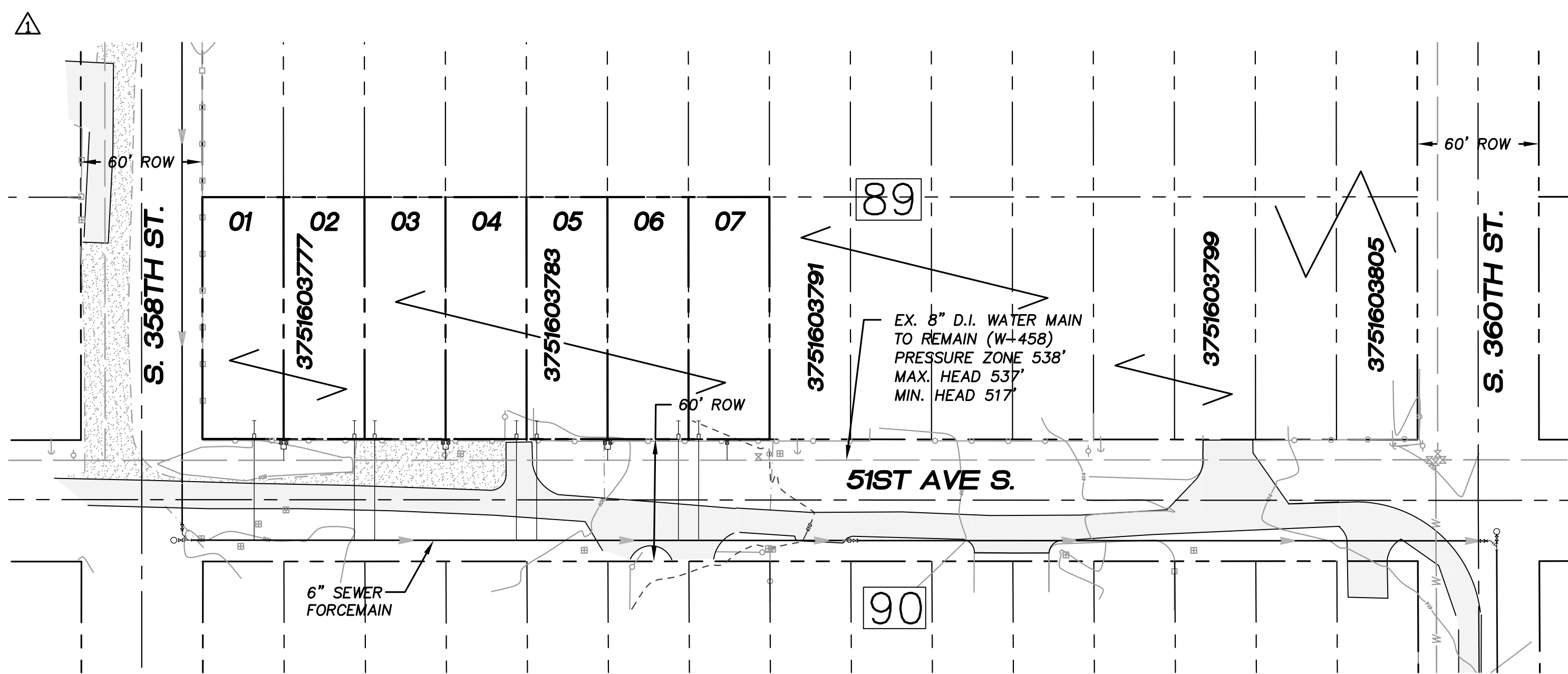


N.W. 1/4, SEC. 26, T. 21 N., R. 4 E., W.M.



KEY MAP  
SCALE: 1" = 1000'

LAKEHAVEN UTILITY DISTRICT

Water Plan \_\_\_\_\_ Sewer Plan \_\_\_\_\_

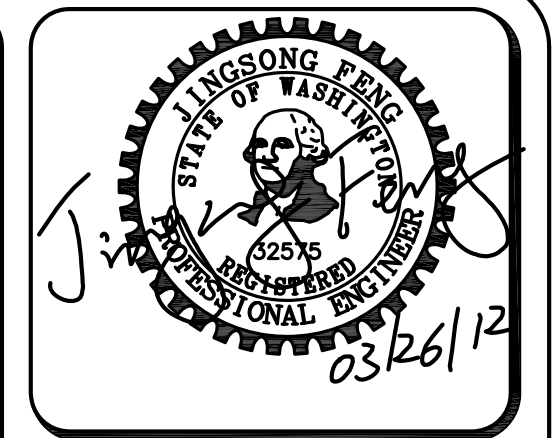
Dated \_\_\_\_\_

**APPROVED FOR CONSTRUCTION**  
SUBJECT TO CHANGES NOTED

The District's review is not a check of any dimension or quantities and will not relieve the Developer from responsibility for errors of any sort. No changes shall be made in the plans except by the consent of the District.

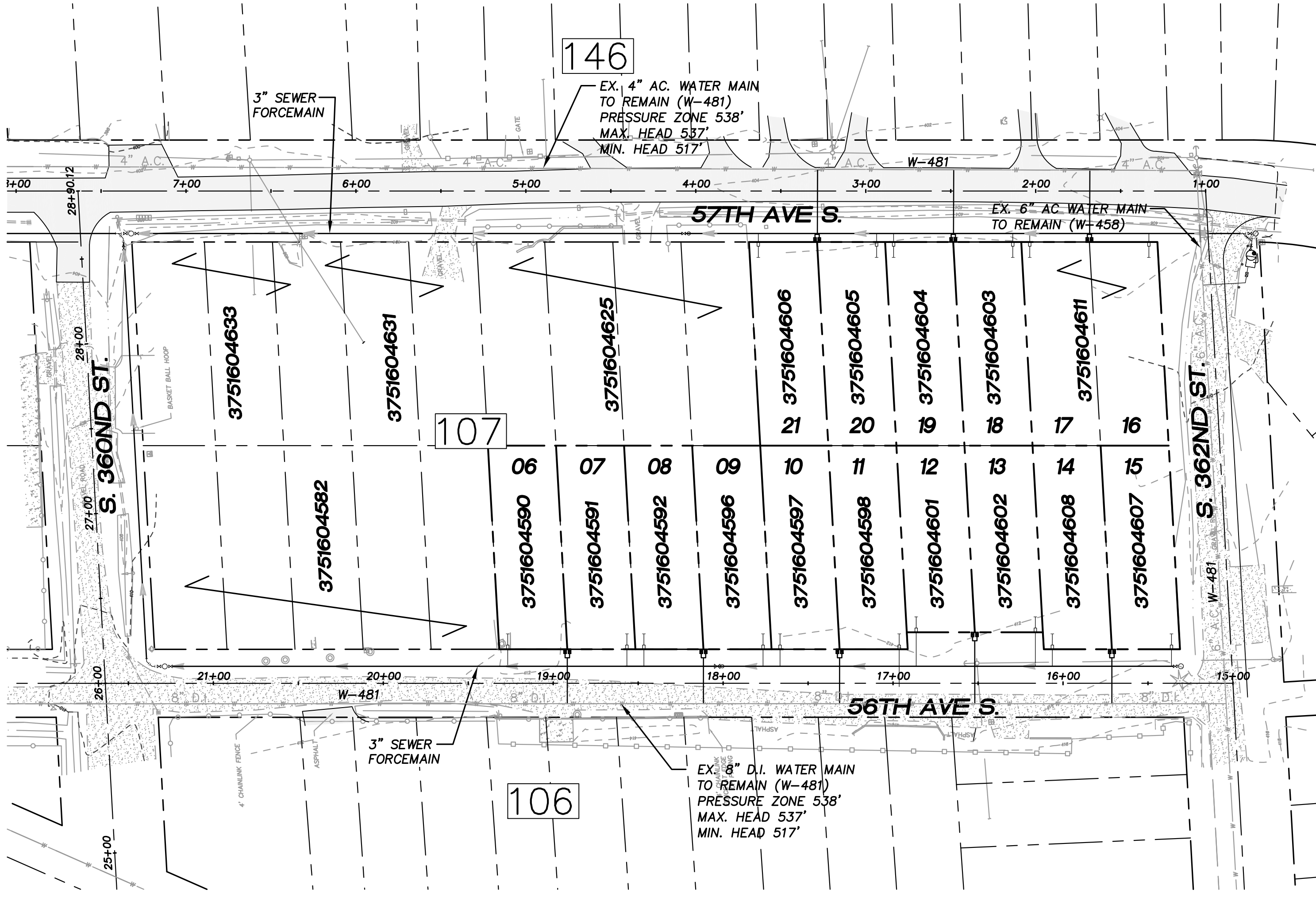
General Manager/District Engineer \_\_\_\_\_ Date \_\_\_\_\_

This construction plan will expire one year from plan approval date, if construction has not commenced.



15445 53RD AVE. S.  
SEATTLE, WA 98188  
PHONE: (206) 431-7970  
FAX: (206) 388-1648  
WEB SITE: PACENG.COM

**Pacific Engineering Design, LLC**  
Civil Engineering and Planning Consultants



**LEGEND**

- EX. ASPHALT PAVEMENT
- EX. GRAVEL PAVEMENT
- 6" A.C. EX. WATER MAIN
- NEW ASPHALT PAVEMENT
- NEW CONC. SIDEWALK
- 8" D.I. NEW WATER MAIN
- NEW GATE VALVE
- NEW F.H. ASSEMBLY
- NEW WATER BEND W/ CONC. BLOCKING
- NEW WATER TEE W/ CONC. BLOCKING
- NEW WATER METER
- 428- EX. CONTOUR
- 406- FINISHED CONTOUR
- 57 BLOCK NUMBER

**NOTE:**

- ALL SEWER FORCEMAIN PIPES ARE DR-11 HDPE PIPES. THE SEWER FORCEMAIN SHALL HAVE 10' MINIMUM HORIZONTAL CLEARANCE BETWEEN WATERMAIN. WHEN CROSSING WITH WATERMAIN, THE SEWER FORCEMAIN SHALL CROSS UNDER AND KEEP MINIMUM 18" VERTICAL CLEARANCE FROM THE WATERMAIN. IF THE EXISTING WATERMAIN IS AC PIPE, IT SHALL BE REPLACED WITH SAME SIZE DUCTILE IRON PIPE 10 FEET EACH SIDE OF SEWER CROSSING BUT NO LESS THAN 2 FEET INTO BOTH TRENCH WALLS (NO CDF CRADLE ALLOWED).
- WATERMAINS DEPICTED IN PROFILE VIEW TO HAVE MINIMUM 3' COVER. WATERMAIN VALVE OPERATING NUT TO HAVE 12" COVER.
- LOCATIONS OF EXISTING UTILITIES ARE BASED ON FIELD SURVEY DATA. POT HOLE/RESEARCH EXISTING WATERMAIN AND OTHER UTILITIES BEFORE CONSTRUCTION.
- ALL NEW WATERMAINS ARE DUCTILE IRON PIPES WITH MINIMUM CLASS 50.
- ALL NEW SERVICES TO INDIVIDUAL LOTS ARE 1" (SERVICE & METER) W/ 3/4" x 3/4" REDUCER BUSHINGS. ALL WATER METERS TO BE INSTALLED BY LAKEHAVEN FOLLOWING COMPLETION OF NEW WATERMAIN CONSTRUCTION. UNDER SEPARATE APPLICATIONS, ANY WATER SERVICE CONNECTIONS PROPOSED FROM EXISTING WATERMAIN SHALL BE ENTIRELY INSTALLED BY LAKEHAVEN. DEVELOPER SHOULD SUBMIT APPLICATIONS FOR THESE "FULL" SERVICE INSTALLATIONS TO LAKEHAVEN AT THE COMMENCEMENT OF CONSTRUCTION.
- THE MINIMUM SEPARATION BETWEEN (PARALLEL PIPELINES) WATER MAIN, WATER SERVICE LINE AND PRESSURE SEWER FACILITIES (MUST BE BELOW WATER MAIN OR WATER SERVICE) MUST BE MET, ARE AS FOLLOWS:  
HORIZONTAL ≥ 10' MEASURED EDGE TO EDGE  
VERTICAL ≥ 18", MEASURED EDGE TO EDGE.
- THE MINIMUM SEPARATION BETWEEN (CROSSING PIPELINES) WATER MAIN, WATER SERVICE LINE AND PRESSURE SEWER FACILITIES (MUST BE BELOW WATER MAIN OR WATER SERVICE) MUST BE MET, ARE AS FOLLOWS:  
VERTICAL ≥ 18" MEASURED EDGE TO EDGE

**VERTICAL DATUM:**

NAVD 88

**BENCH MARK:**

KING COUNTY SURVEY CONTROL POINT No. 6905,  
SW CORNER OF SECTION 27, T 24 N, R 4 E, W.M.,  
CONCRETE MONUMENT WITH LEAD AND BRASS TACK,  
SET 1.2 FEET BELOW GRADE, IN STANDARD KC MON. CASE.  
ELEVATION = 367.06

BLOCK 89  
(PRESSURE ZONE 538', MAX. HEAD 537', MIN. HEAD 517')

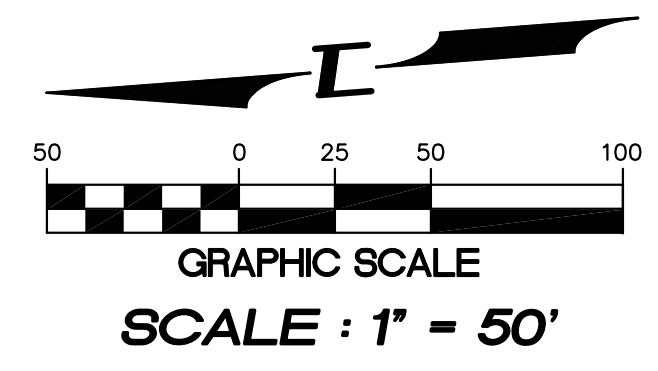
LOT NO.	LOWEST FIXTURE ELEV. (FT.)	HIGHEST FIXTURE ELEV. (FT.)	ESTIMATED MIN. STATIC PRESSURE (PSI.)	ESTIMATED MAX. STATIC PRESSURE (PSI.)
1	407.00'	422.00'	41	56
2	407.00'	422.00'	41	56
3	407.00'	422.00'	41	56
4	407.00'	422.00'	41	56
5	408.00'	423.00'	41	56
6	408.00'	423.00'	41	56
7	410.00'	425.00'	40	55

BLOCK 107  
(PRESSURE ZONE 538', MAX. HEAD 537', MIN. HEAD 517')

LOT NO.	LOWEST FIXTURE ELEV. (FT.)	HIGHEST FIXTURE ELEV. (FT.)	ESTIMATED MIN. STATIC PRESSURE (PSI.)	ESTIMATED MAX. STATIC PRESSURE (PSI.)
06	413.00'	428.00'	39	54
07	413.00'	428.00'	39	54
08	413.00'	428.00'	39	54
09	413.00'	428.00'	39	54
10	413.00'	428.00'	39	54
11	413.00'	428.00'	39	54
12	413.00'	428.00'	39	54
13	413.00'	428.00'	39	54
14	413.00'	428.00'	39	54
15	413.00'	428.00'	39	54
16	410.00'	425.00'	40	55
17	410.00'	425.00'	40	55
18	410.00'	425.00'	40	55
19	410.00'	425.00'	40	55
20	410.00'	425.00'	40	55
21	408.00'	423.00'	41	56

**NOTE:**

SERVICE LINES WILL BE CONNECTING TO EXISTING ACTIVE WATER MAINS. LAKEHAVEN CREWS ARE REQUIRED TO INSTALL ALL SERVICE LINES FROM EXISTING ACTIVE MAINS.



LAKEHAVEN UTILITY DISTRICT PROJECT No. 6304025  
**PEPPER HILL ESTATES**  
KING COUNTY, WA.

FOR:  
HIGHLAND PACIFIC HOUSING GROUP I, LLC  
1420 5TH AVE, SUITE 2200  
SEATTLE, WA, 98101-5346  
PHONE: (206) 521-5979, FAX: (206) 254-2880

PROJECT NO.: **05052**  
DRAWN BY: **JGC**  
ISSUE DATE: **07-31-07**  
SHEET REV.: **03-26-2012**

**WATER SERVICES**  
51ST AVE S,  
56TH AVE S AND  
57TH AVE S PLAN

05052WA06-WA07.DWG  
**WA07**