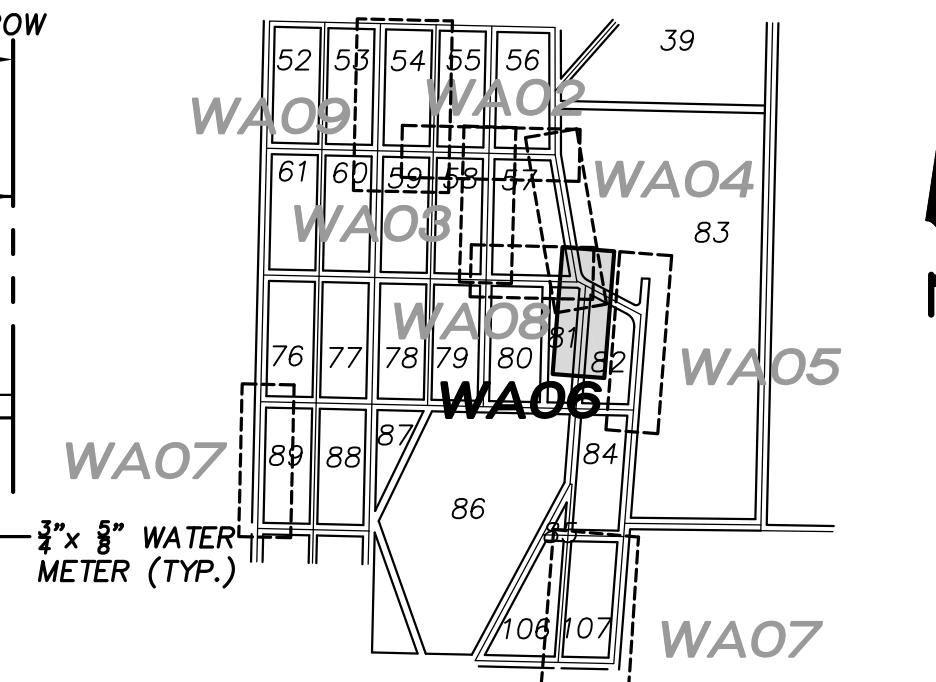
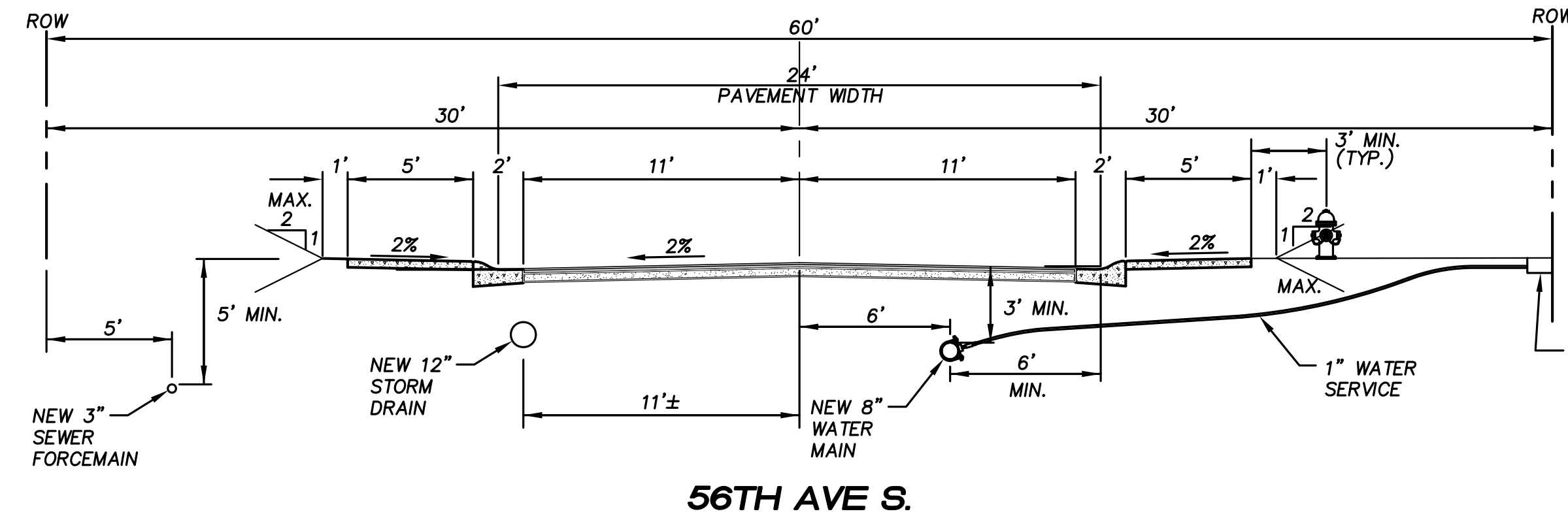


- 17 MATCH POINT SEE SHEET WA04
- 29 153+99.26, 5.83' R
1-8" 45' BEND (M.J)
W/CONC. BLOCKING
- 30 153+78.75, 10'± L
CUT IN CONNECT TO EX. 8" D.I.P.
1-8" ADAPTER
VERIFY LOCATION AND DEPTH
PRIOR TO CONSTRUCTION.
NOTIFY ENGINEER OF ANY
CONFLICT.
- 30A 152+68.00, 10'± L
1-8"x6" TAPPING TEE (FL)
1-6" GATE VALVE (FLxMJ)
1-FIRE HYDRANT ASSEMBLY
12LF 6" D.I.P.
- 31 154+49.89, 5.83' R
BEGIN HORIZONTAL
CURVE (R=200')
- 31A 155+32.07, 1.22' R
END HORIZONTAL
CURVE (R=200')
- 32 153+83.76, 10'± L CONNECT TO EX.
8" D.I.P. 1-8" 45' BEND (MJxFL)
W/CONC. BLOCKING

N.W. 1/4, SEC. 26, T. 21 N., R. 4 E., W.M.



KEY MAP
SCALE: 1" = 1000'

LAKEHAVEN UTILITY DISTRICT

Water Plan _____ Sewer Plan _____

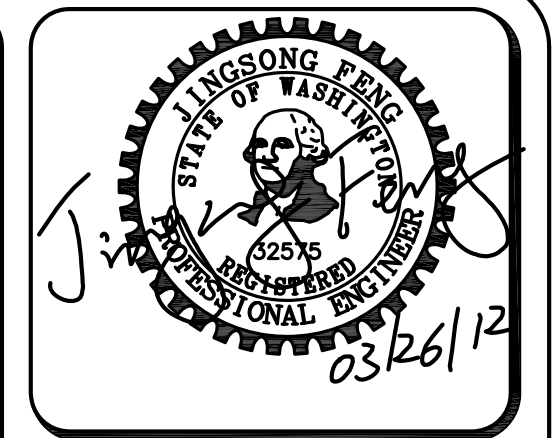
Dated _____

APPROVED FOR CONSTRUCTION
SUBJECT TO CHANGES NOTED

The District's review is not a check of any dimension or quantities and will not relieve the Developer from responsibility for errors of any sort. No changes shall be made in the plans except by the consent of the District.

General Manager/District Engineer _____ Date _____

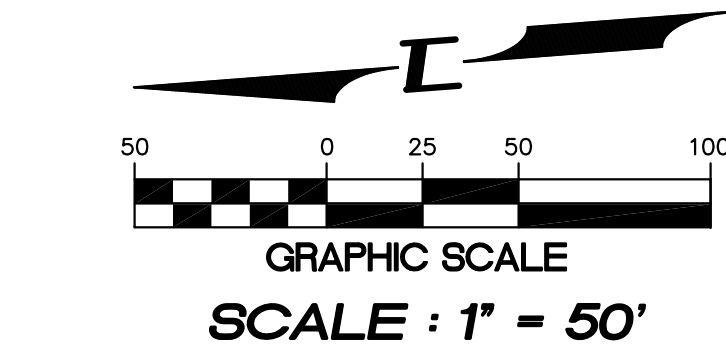
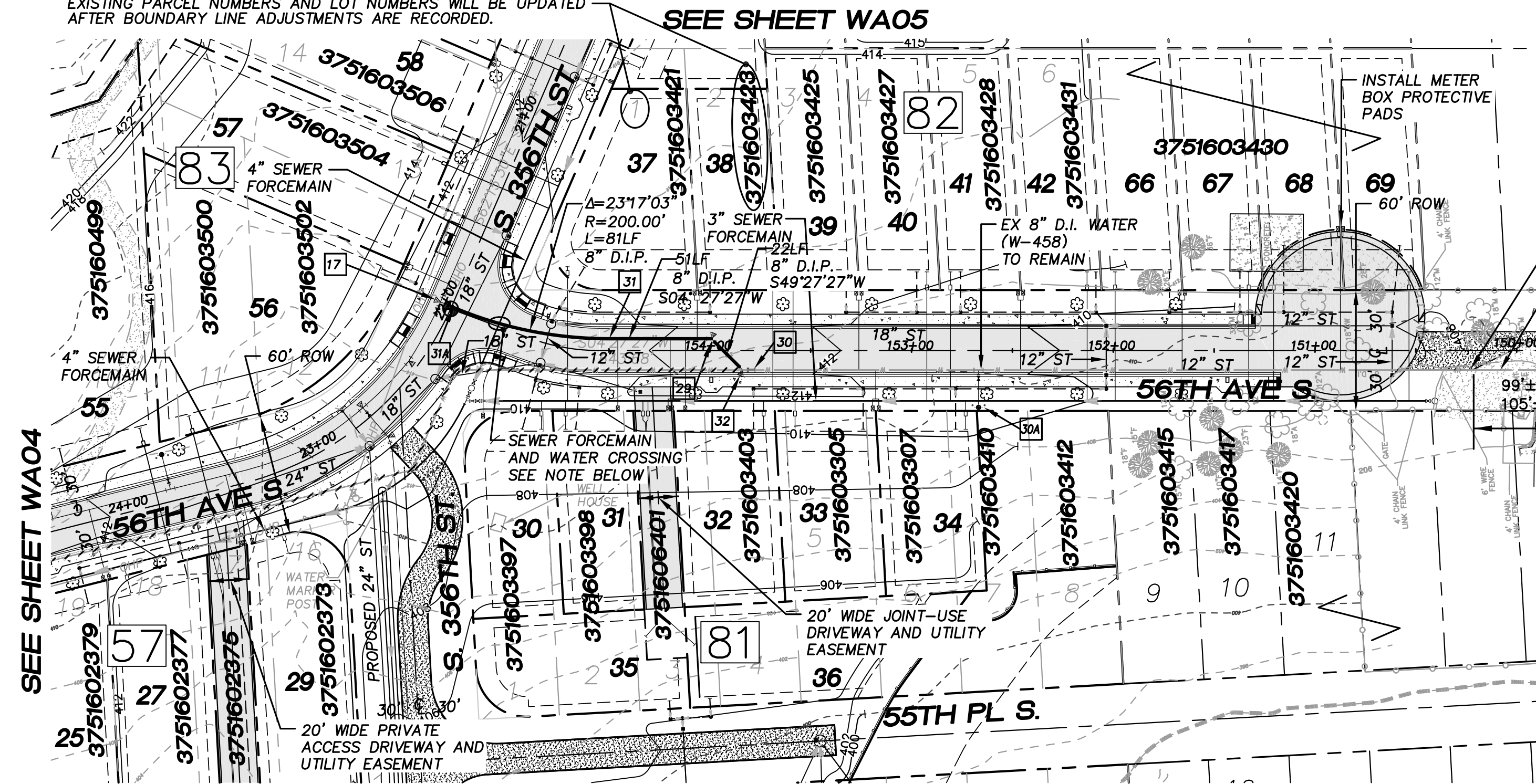
This construction plan will expire one year from plan approval date, if construction has not commenced.



15445 53RD AVE. S.
SEATTLE, WA 98188
PHONE: (206) 431-7970
FAX: (206) 388-1648
WEB SITE: PACENG.COM

Pacific Engineering Design, LLC
Civil Engineering and Planning Consultants

NOTE:
EXISTING PARCEL NUMBERS AND LOT NUMBERS WILL BE UPDATED AFTER BOUNDARY LINE ADJUSTMENTS ARE RECORDED.



INSTALL METER BOX PROTECTIVE PADS

PRESSURE ZONE 538'
MAX. HEAD 537"
MIN. HEAD 517"

EX. 8" D.I. WATER MAIN TO REMAIN (W-458)

99'± TO EX. FH (W-458)
105'± TO EX. WATER VALVE (W-458)

CROSSING TABLE:

1) BOTTOM 8" WATER = 407.00
TOP 18" STORM = 405.37

NOTE:

- ALL SEWER FORCEMAIN PIPES ARE DR-11 HDPE PIPES. THE SEWER FORCEMAIN SHALL HAVE 10' MINIMUM HORIZONTAL CLEARANCE BETWEEN WATERMAIN. WHEN CROSSING WITH WATERMAIN, THE SEWER FORCEMAIN SHALL CROSS UNDER AND KEEP MINIMUM 18" VERTICAL CLEARANCE FROM THE WATERMAIN. IF THE EXISTING WATERMAIN IS AC PIPE, IT SHALL BE REPLACED WITH SAME SIZE DUCTILE IRON PIPE 10 FEET EACH SIDE OF SEWER CROSSING BUT NO LESS THAN 2 FEET INTO BOTH TRENCH WALLS (NO CDF CRADLE ALLOWED).
- WATERMANS DEPICTED IN PROFILE VIEW TO HAVE MINIMUM 3' COVER. WATERMAIN VALVE OPERATING NUT TO HAVE 12" COVER.
- LOCATIONS OF EXISTING UTILITIES ARE BASED ON FIELD SURVEY DATA. POTHOLE/RESEARCH EXISTING WATERMAIN AND OTHER UTILITIES BEFORE CONSTRUCTION.
- ALL NEW WATERMANS ARE DUCTILE IRON PIPES WITH MINIMUM CLASS 50.
- ALL NEW SERVICES TO INDIVIDUAL LOTS ARE 1" (SERVICE & METER) W/ 3/8" x 3/8" REDUCER BUSHINGS. ALL WATER METERS TO BE INSTALLED BY LAKEHAVEN FOLLOWING COMPLETION OF NEW WATERMAIN CONSTRUCTION. UNDER SEPARATE APPLICATIONS, ANY WATER SERVICE CONNECTIONS PROPOSED FROM EXISTING WATERMAIN SHALL BE ENTIRELY INSTALLED BY LAKEHAVEN. DEVELOPER SHOULD SUBMIT APPLICATIONS FOR THESE 'FULL' SERVICE INSTALLATIONS TO LAKEHAVEN AT THE COMMENCEMENT OF CONSTRUCTION.
- THE MINIMUM SEPARATION BETWEEN (PARALLEL PIPELINES) WATER MAIN, WATER SERVICE LINE AND PRESSURE SEWER FACILITIES (MUST BE BELOW WATER MAIN OR WATER SERVICE) MUST BE MET, ARE AS FOLLOWS:
HORIZONTAL ≥ 10' MEASURED EDGE TO EDGE
VERTICAL ≥ 18", MEASURED EDGE TO EDGE.
- THE MINIMUM SEPARATION BETWEEN (CROSSING PIPELINES) WATER MAIN, WATER SERVICE LINE AND PRESSURE SEWER FACILITIES (MUST BE BELOW WATER MAIN OR WATER SERVICE) MUST BE MET, ARE AS FOLLOWS:
VERTICAL ≥ 18" MEASURED EDGE TO EDGE

VERTICAL DATUM:

NAVD 88

BENCH MARK:

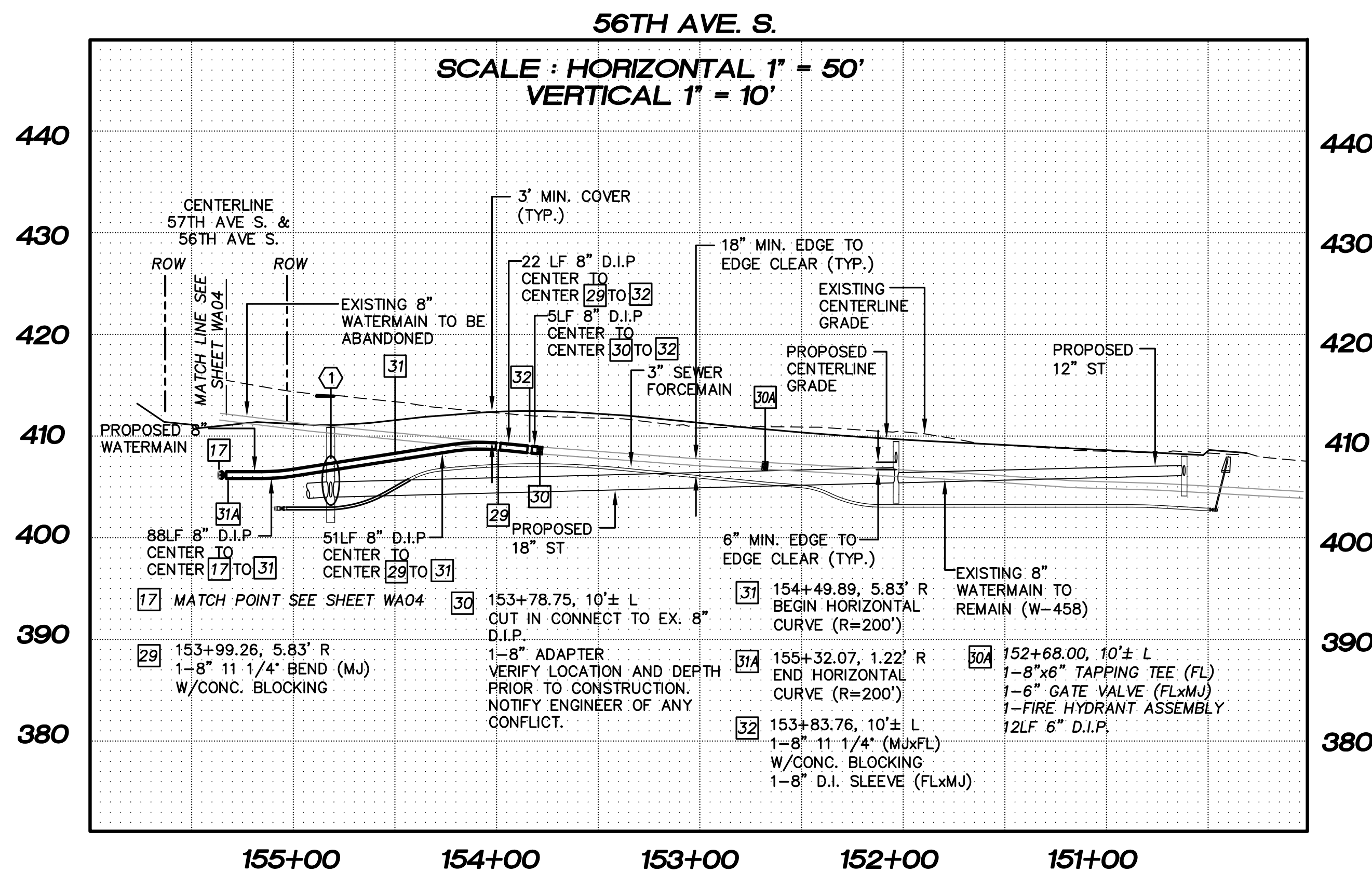
KING COUNTY SURVEY CONTROL POINT No. 6905,
SW CORNER OF SECTION 27, T 24 N, R 4 E, W.M.,
CONCRETE MONUMENT WITH LEAD AND BRASS TACK,
SET 1.2 FEET BELOW GRADE, IN STANDARD KC MON. CASE.
ELEVATION = 367.06

LEGEND

- EX. ASPHALT PAVEMENT
- EX. GRAVEL PAVEMENT
- 6" A.C. EX. WATER MAIN
- NEW ASPHALT PAVEMENT
- NEW CONC. SIDEWALK
- 8" D.I. NEW WATER MAIN
- NEW GATE VALVE
- NEW F.H. ASSEMBLY
- NEW WATER BEND W/ CONC. BLOCKING
- NEW WATER TEE W/ CONC. BLOCKING
- NEW WATER METER
- 428- EX. CONTOUR
- 406- FINISHED CONTOUR
- 57 BLOCK NUMBER

BLOCK 81, BLOCK 82
(PRESSURE ZONE 538', MAX. HEAD 537', MIN. HEAD 517')

LOT NO.	LOWEST FIXTURE ELEV. (FT.)	HIGHEST FIXTURE ELEV. (FT.)	ESTIMATED MIN. STATIC PRESSURE (PSI.)	ESTIMATED MAX. STATIC PRESSURE (PSI.)
30	409.00'	424.00'	40	55
31	409.00'	424.00'	40	55
32	410.00'	425.00'	40	55
33	410.00'	425.00'	40	55
34	410.00'	425.00'	40	55
35	416.00'	431.00'	37	52
36	416.00'	431.00'	37	52
37	413.00'	428.00'	39	54
38	413.00'	428.00'	39	54
39	413.00'	428.00'	39	54
40	413.00'	428.00'	39	54
41	413.00'	428.00'	39	54
42	413.00'	428.00'	39	54
66	413.00'	428.00'	39	54
67	411.00'	426.00'	39	55
68	409.00'	424.00'	40	55
69	409.00'	424.00'	40	55



LAKEHAVEN UTILITY DISTRICT PROJECT No. 6304025
PEPPER HILL ESTATES
KING COUNTY, WA.

FOR: HIGHLAND PACIFIC HOUSING GROUP I, LLC
1420 55TH AVE, SUITE 2200
SEATTLE, WA, 98101-0346
PHONE: (206) 521-5979 FAX: (206) 254-2880

PROJECT NO.: **05052**
DRAWN BY: **JGC**
ISSUE DATE: **07-31-07**
SHEET REV.: **03-26-2012**

**WATER MAIN
56TH AVE. S.
PLAN AND PROFILE**

05052WA06-WA06.DWG
WA06