

- 73 SEE SHEET SS17
- 74 SEE SHEET SS17
- 77 2-3" 45° HDPE DR 11 BEND
- 78 1-3" FORCE MAIN CLEANOUT W/PIG PORT #29 1-3"x2" REDUCER
- 79 1-2" ISOLATION GATE VALVE W/BOX
- 80 1-2" CLEANOUT W/PIG PORT #30

VERTICAL DATUM :

NAVD 88

BENCH MARK :

KING COUNTY SURVEY CONTROL POINT No. 6905, SW CORNER OF SECTION 27, T 24 N, R 4 E, W.M., CONCRETE MONUMENT WITH LEAD AND BRASS TACK, SET 1.2 FEET BELOW GRADE, IN STANDARD KC MON. CASE.

ELEVATION = 367.06

N.W. 1/4, SEC. 26, T. 21 N., R. 4 E., W.M.

LAKEHAVEN UTILITY DISTRICT

0 Water Plan 6 Sewer Plan

Dated _____

APPROVED FOR CONSTRUCTION
SUBJECT TO CHANGES NOTED

The District's review is not a check of any dimension or quantities and will not relieve the Developer from responsibility for errors of any sort. No changes shall be made in the plans except by the consent of the District.

General Manager/District Engineer Date _____

This construction plan will expire one year from plan approval date, if construction has not commenced.



15445 53RD AVE. S.
SEATTLE, WA 98188
PHONE: (206) 431-7970
FAX: (206) 388-1648
WEB SITE: PACENG.COM

Pacific Engineering Design, LLC
Civil Engineering and Planning Consultants

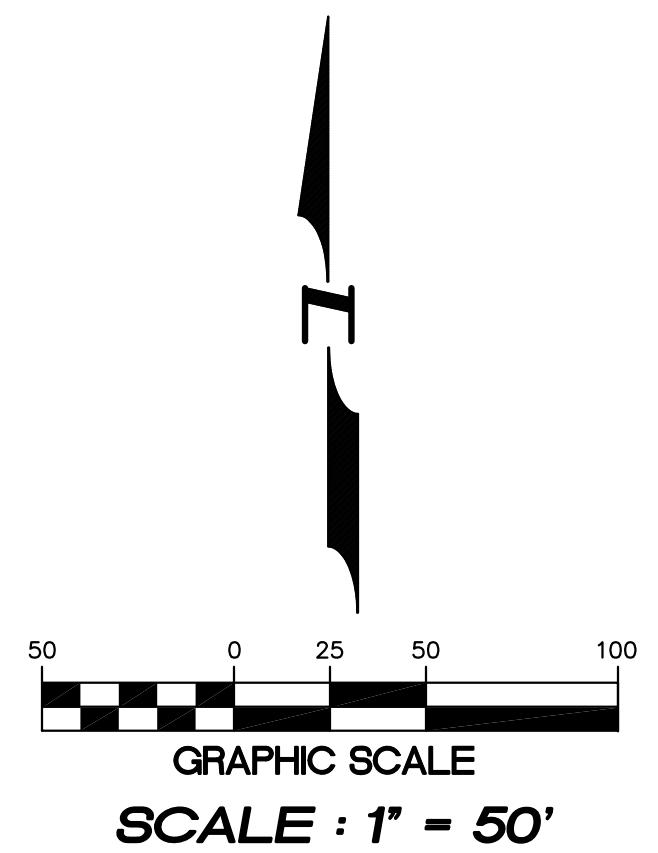
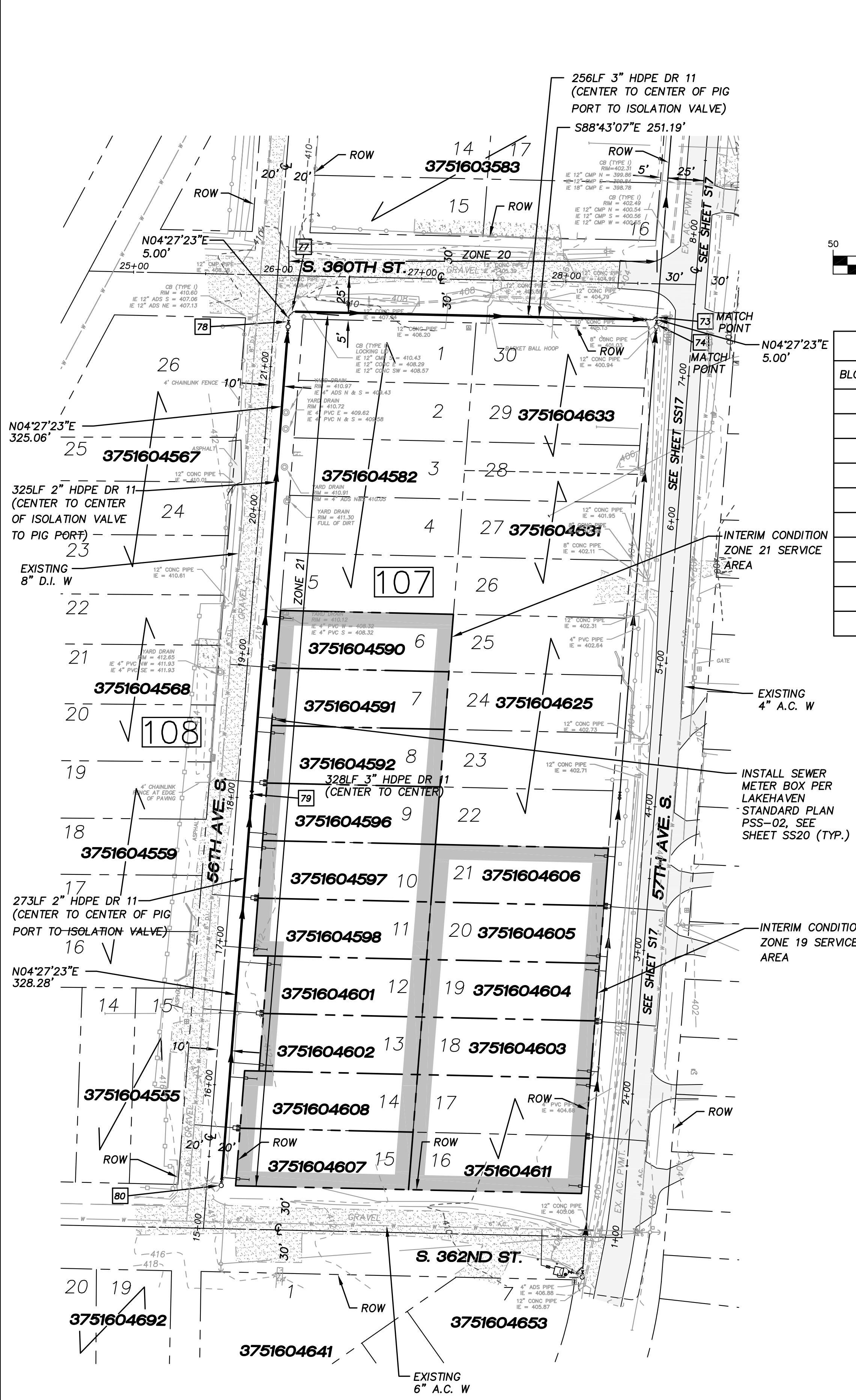
LAKEHAVEN UTILITY DISTRICT PROJECT No. 6304025
PEPPER HILL ESTATES
KING COUNTY, WA

FOR: PACIFIC HOUSING GROUP I, LLC
SEATTLE, WA 98107-1346
PHONE: (206) 521-5979 · FAX: (206) 224-2880

PROJECT NO.: 05052
DRAWN BY: JQC
ISSUE DATE: 08-26-08
SHEET REV.: 09-29-10

**FORCE MAIN
SANITARY SEWER
56TH AVE S/S 360TH ST
PLAN AND PROFILE**

05052SS18.DWG
SS18

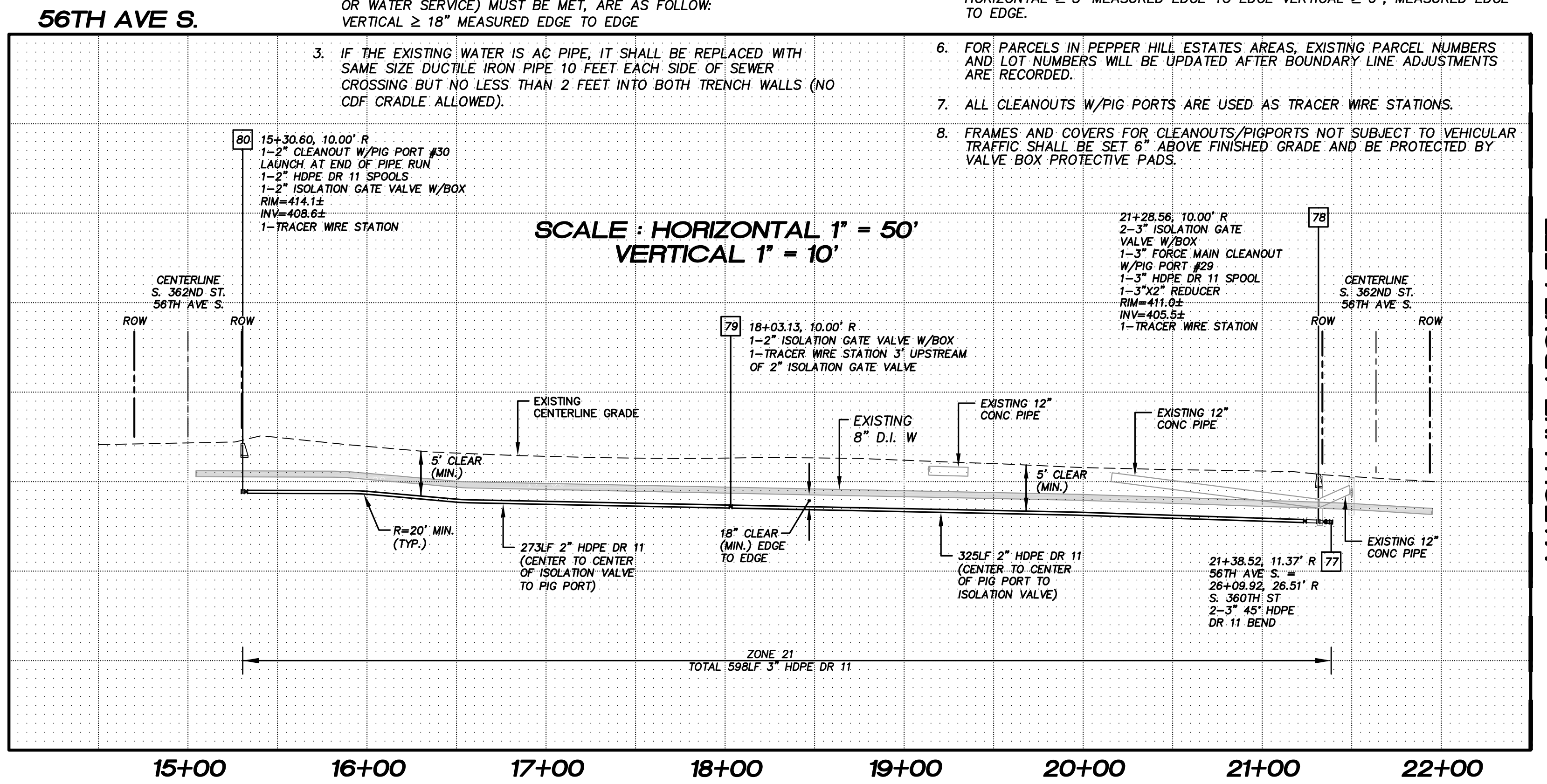


SANITARY SIDE SEWER STUB

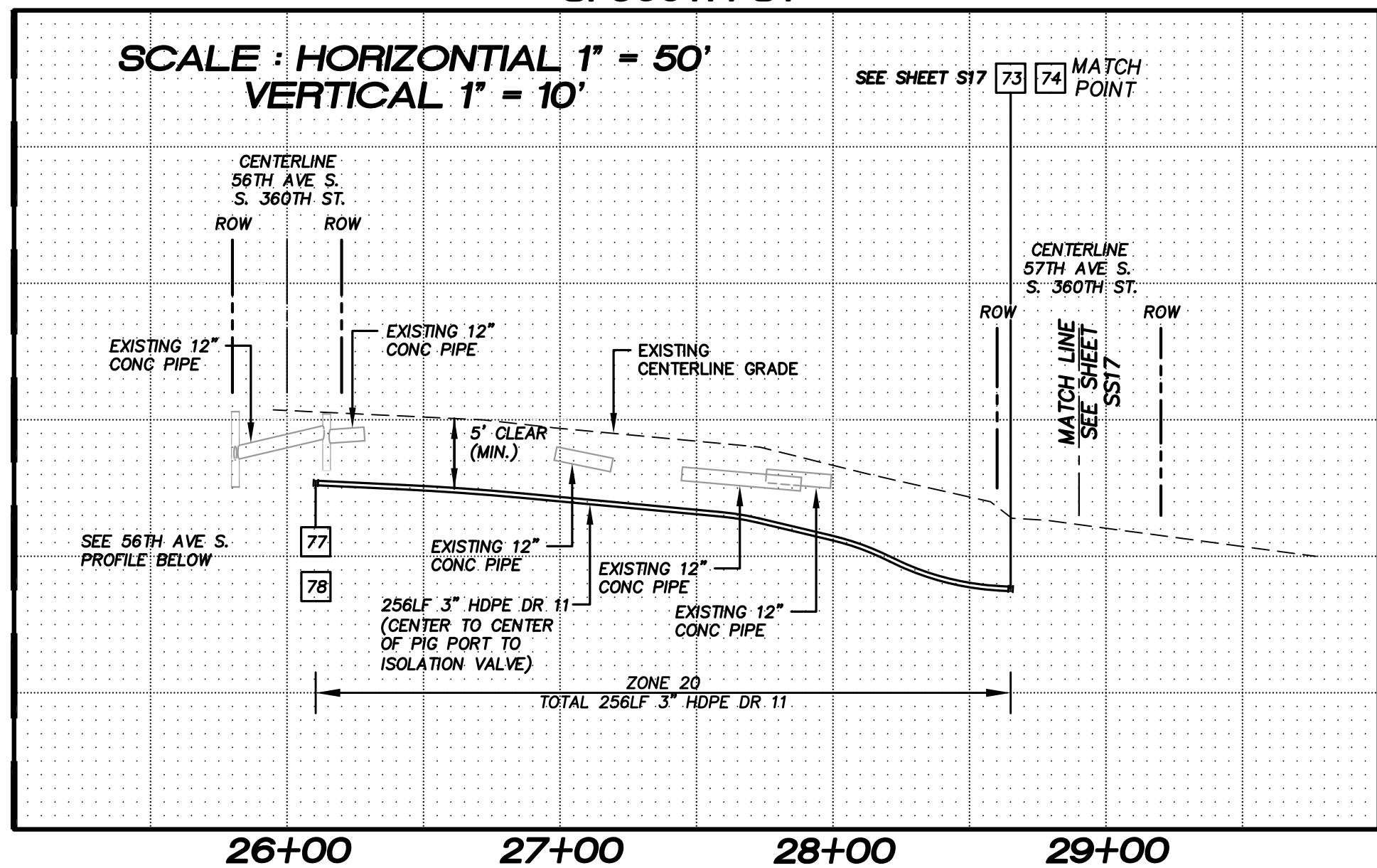
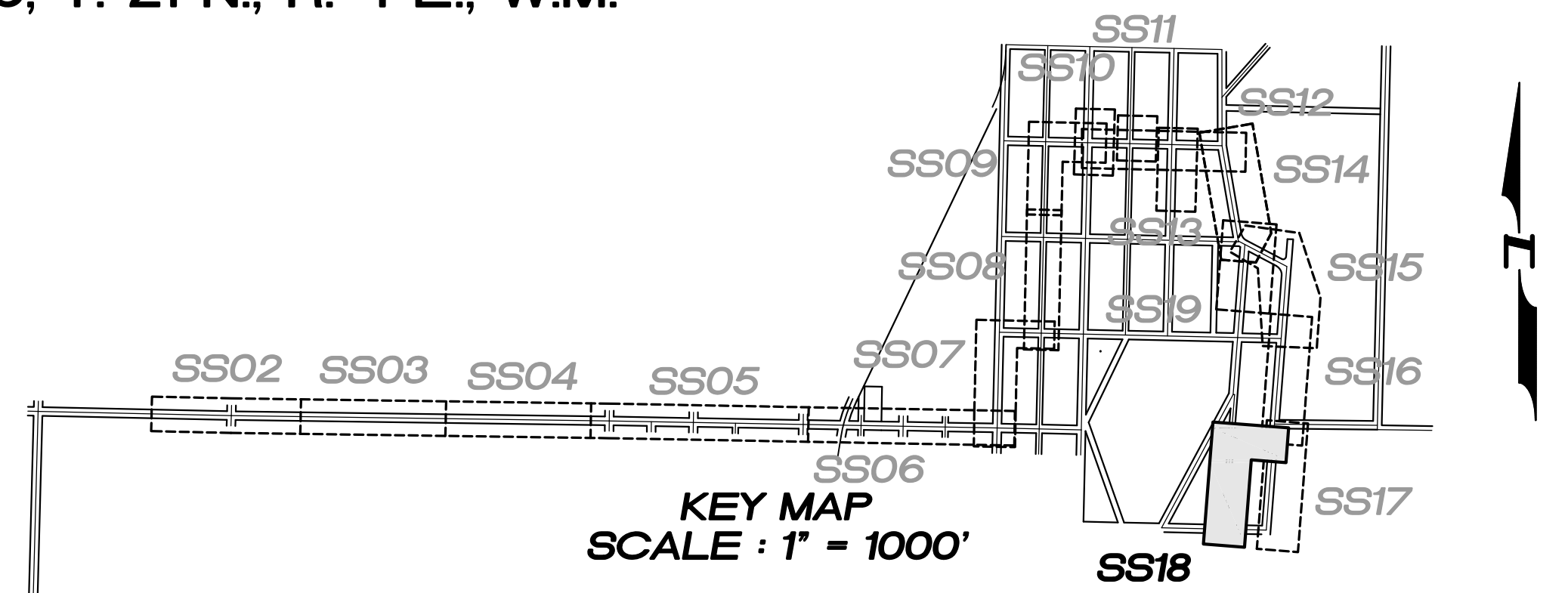
BLOCK No.	LOT No.	PAD ELEV.	STA.	SIZE	LENGTH	DEPTH AT P.L.	INV. AT P.L.
107	6	413.0	2+05	1.25" HDPE DR 11	22LF	3' (TYP.)	410.3
107	7	413.0	2+75	1.25" HDPE DR 11	22LF	3' (TYP.)	410.3
107	8	413.0	2+85	1.25" HDPE DR 11	22LF	3' (TYP.)	410.3
107	9	413.0	0+27	1.25" HDPE DR 11	22LF	3' (TYP.)	410.3
107	10	413.0	0+37	1.25" HDPE DR 11	22LF	3' (TYP.)	410.3
107	11	413.0	1+07	1.25" HDPE DR 11	22LF	3' (TYP.)	410.3
107	12	413.0	1+17	1.25" HDPE DR 11	22LF	3' (TYP.)	410.3
107	13	413.0	1+87	1.25" HDPE DR 11	22LF	3' (TYP.)	410.3
107	14	413.0	1+97	1.25" HDPE DR 11	22LF	3' (TYP.)	410.3
107	15	413.0	2+67	1.25" HDPE DR 11	22LF	3' (TYP.)	410.3

NOTES :

- THE MINIMUM SEPARATION BETWEEN (PARALLEL PIPELINES) WATER MAIN, WATER SERVICE LINE AND PRESSURE SEWER FACILITIES MUST BE BELOW WATER MAIN OR WATER SERVICE) MUST BE MET, ARE AS FOLLOWS:
HORIZONTAL ≥ 10' MEASURED EDGE TO EDGE VERTICAL ≥ 18", MEASURED EDGE TO EDGE.
- THE MINIMUM SEPARATION BETWEEN (CROSSING PIPELINES) WATER MAIN, WATER SERVICE LINE AND PRESSURE SEWER FACILITIES MUST BE BELOW WATER MAIN OR WATER SERVICE) MUST BE MET, ARE AS FOLLOWS:
CROSSING BUT NO LESS THAN 2 FEET INTO BOTH TRENCH WALLS (NO CDF CRADLE ALLOWED).
VERTICAL ≥ 18" MEASURED EDGE TO EDGE
- IF THE EXISTING WATER IS AC PIPE, IT SHALL BE REPLACED WITH SAME SIZE DUCTILE IRON PIPE 10 FEET EACH SIDE OF SEWER CROSSING BUT NO LESS THAN 2 FEET INTO BOTH TRENCH WALLS (NO CDF CRADLE ALLOWED).
- LOCATION OF EXISTING UNDERGROUND UTILITIES WAS PROVIDED BY UTILITY LOCATE AND BY AS BUILT RECORDS.. UTILITY PAINT MARKS WERE FIELD SURVEYED BY CES NW INC.
- OTHER UTILITY SEPARATION BETWEEN PRESSURE SEWER FACILITIES MUST BE MET, ARE AS FOLLOWS:
HORIZONTAL ≥ 3' MEASURED EDGE TO EDGE VERTICAL ≥ 6", MEASURED EDGE TO EDGE.
- FOR PARCELS IN PEPPER HILL ESTATES AREAS, EXISTING PARCEL NUMBERS AND LOT NUMBERS WILL BE UPDATED AFTER BOUNDARY LINE ADJUSTMENTS ARE RECORDED.
- ALL CLEANOUTS W/PIG PORTS ARE USED AS TRACER WIRE STATIONS.
- FRAMES AND COVERS FOR CLEANOUTS/PIGPORTS NOT SUBJECT TO VEHICULAR TRAFFIC SHALL BE SET 6" ABOVE FINISHED GRADE AND BE PROTECTED BY VALVE BOX PROTECTIVE PADS.



KEY MAP
SCALE : 1" = 1000'



SCALE : HORIZONTAL 1" = 50'
VERTICAL 1" = 10'