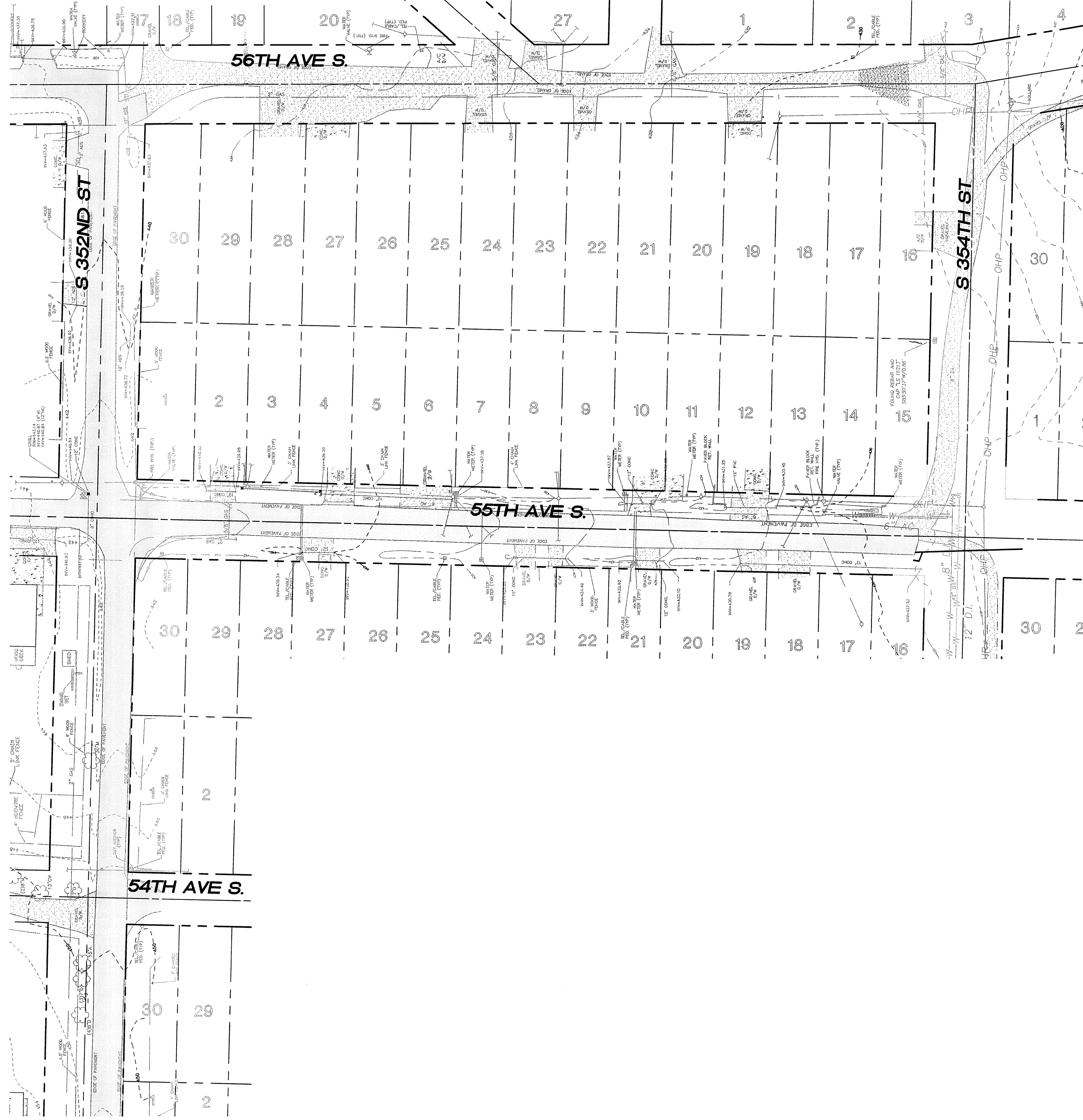
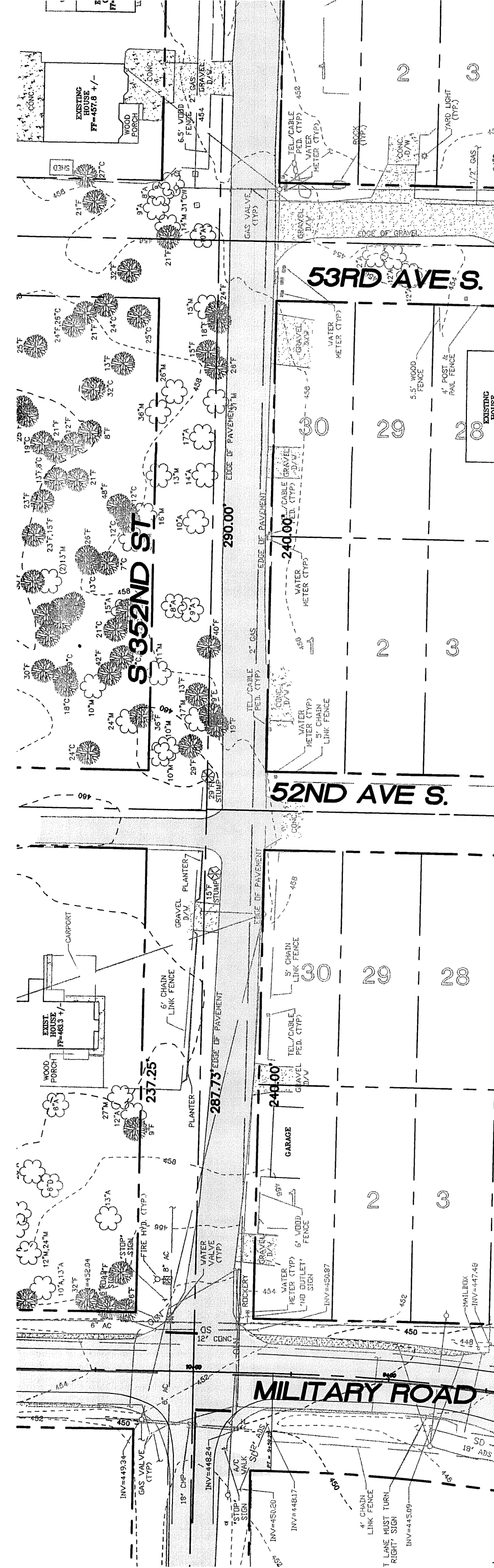


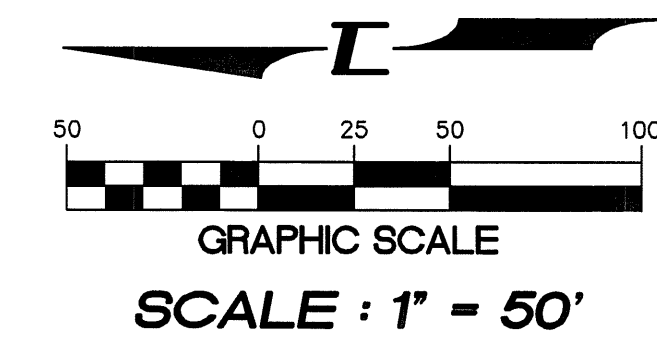
N.W. 1/4, SEC. 26, T. 21 N., R. 4 E., W.M.

CONTINUED LOWER RIGHT



CONTINUED UPPER LEFT

CONTINUED ON SHEET R03



15445 53RD AVE. S.  
SEATTLE, WA 98188  
PHONE: (206) 431-7970  
FAX: (206) 388-1648  
WEB SITE: PACENG.COM

**Pacific Engineering Design, LLC**  
Civil Engineering and Planning Consultants

**PEPPER HILL ESTATES**  
KING COUNTY, WA

FOR:  
PACIFIC HOUSING GROUP I, LLC  
1420 5TH AVE, SUITE 2200  
SEATTLE, WA 98101-5346  
PHONE: (206) 521-5979 FAX: (206) 224-2880

PROJECT NO.: **05052**  
DRAWN BY: **JGC/RRJ**  
ISSUE DATE: **06-22-07**  
SHEET REV.: **11-20-09**

**EXISTING CONDITIONS (NORTH HALF)**

KING COUNTY D.D.E.S.	
Review Engineer	Completion Date
Senior Engineer	Completion Date
MOLLY A. JOHNSON, P.E. DEVELOPMENT ENGINEER	Approval Date
Comments:	

05052E002-RW28.DWG  
**R28**