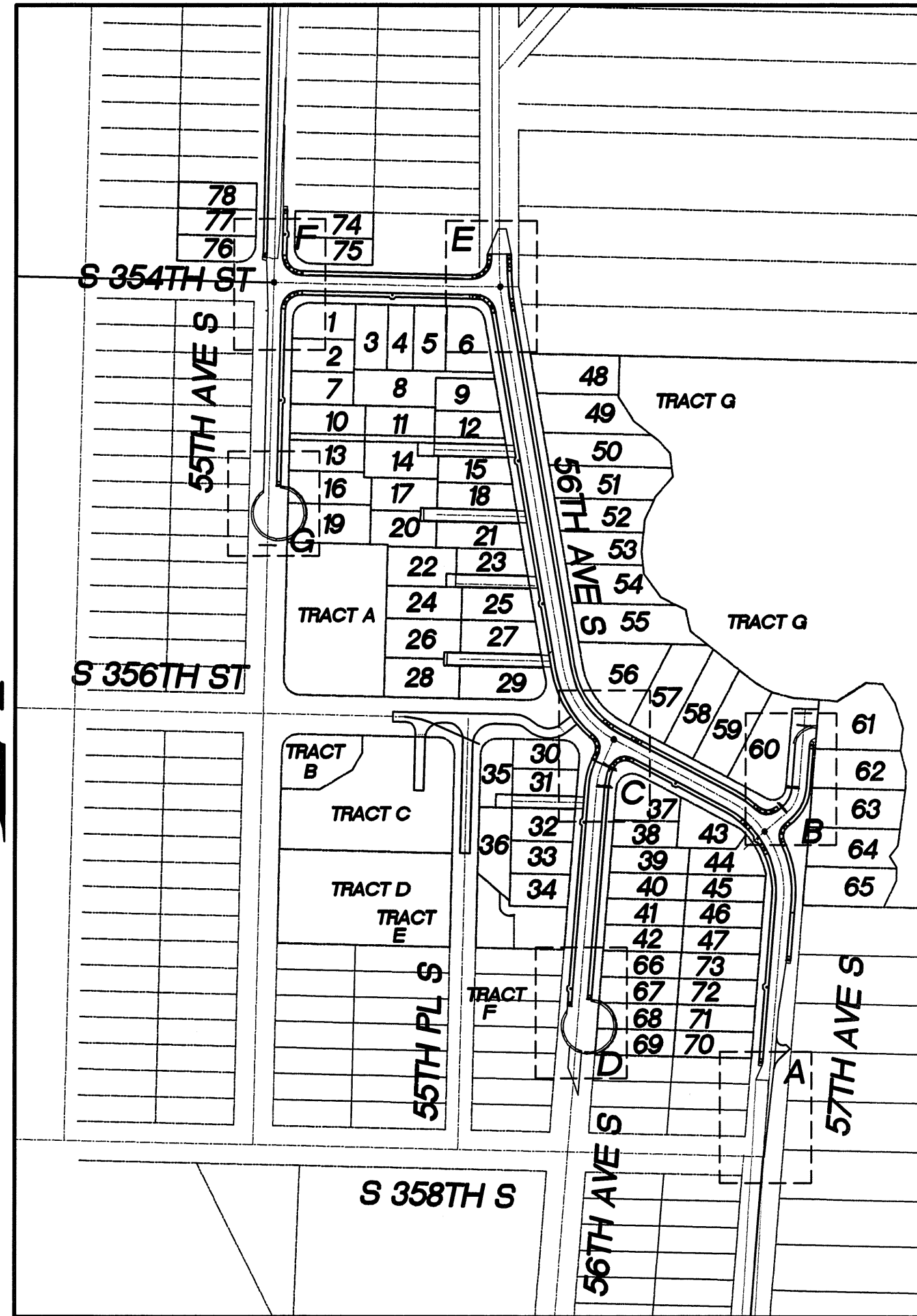
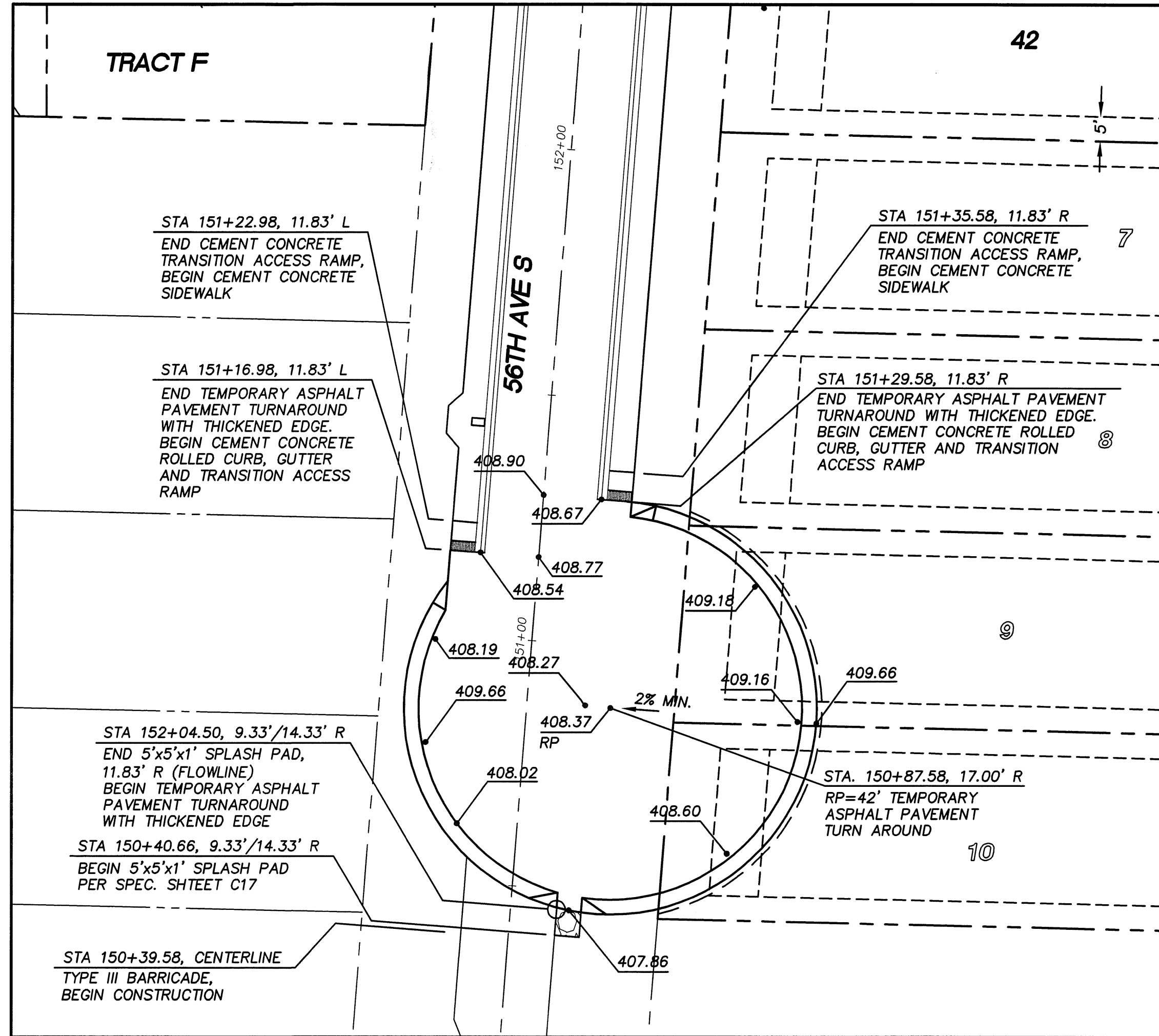


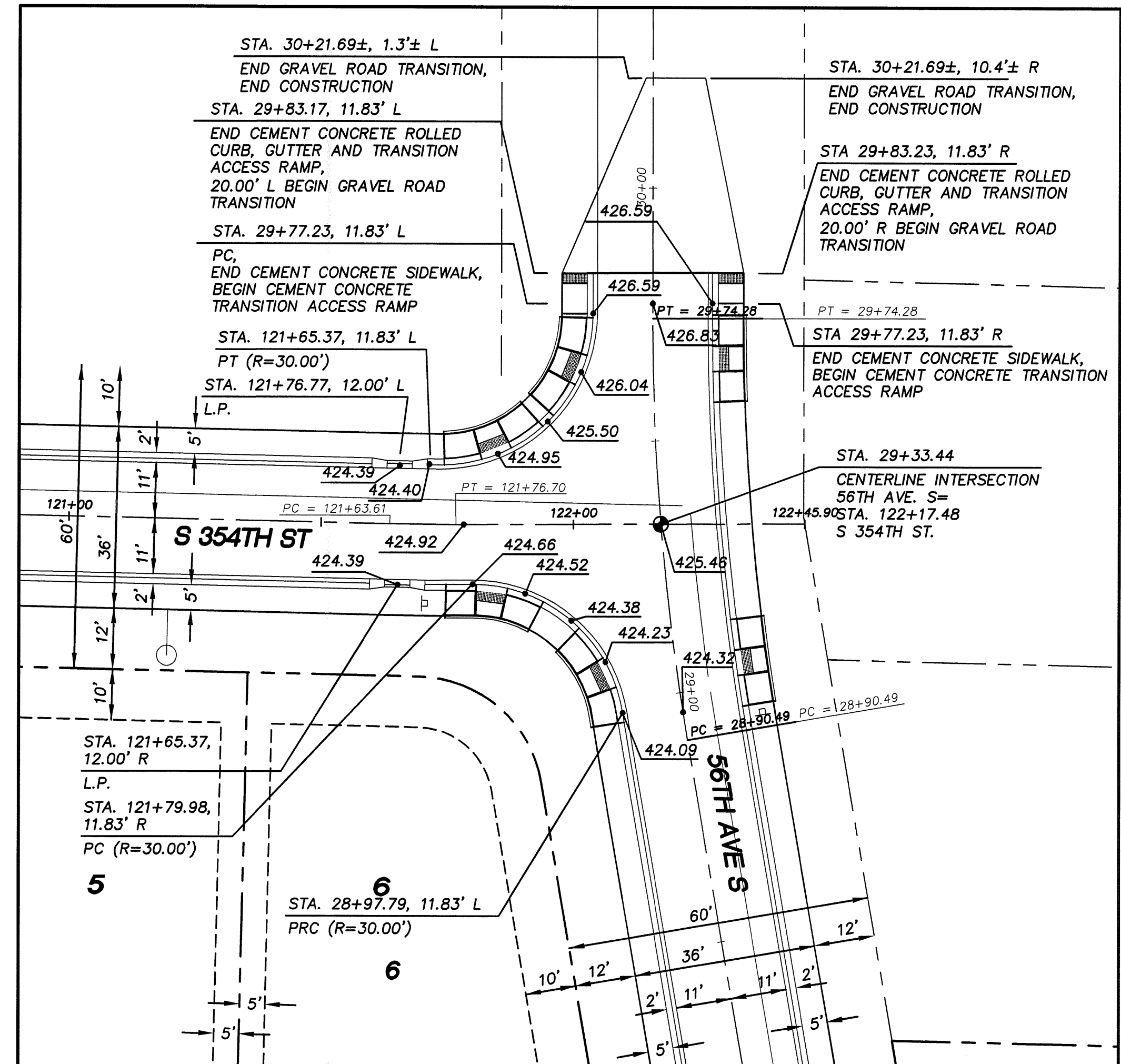
N.W. 1/4, SEC. 26, T. 21 N., R. 4 E., W.M.



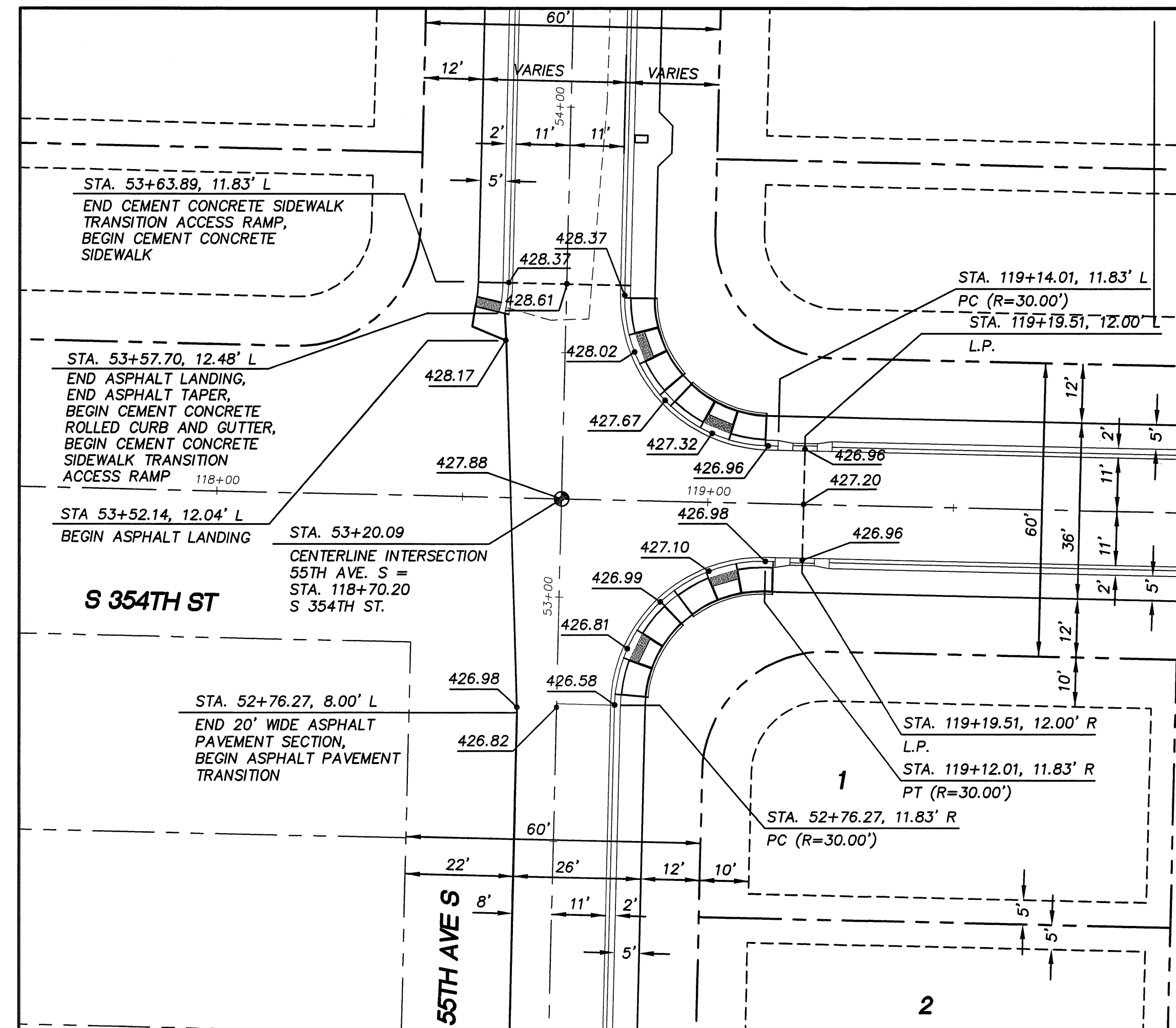
KEY MAP



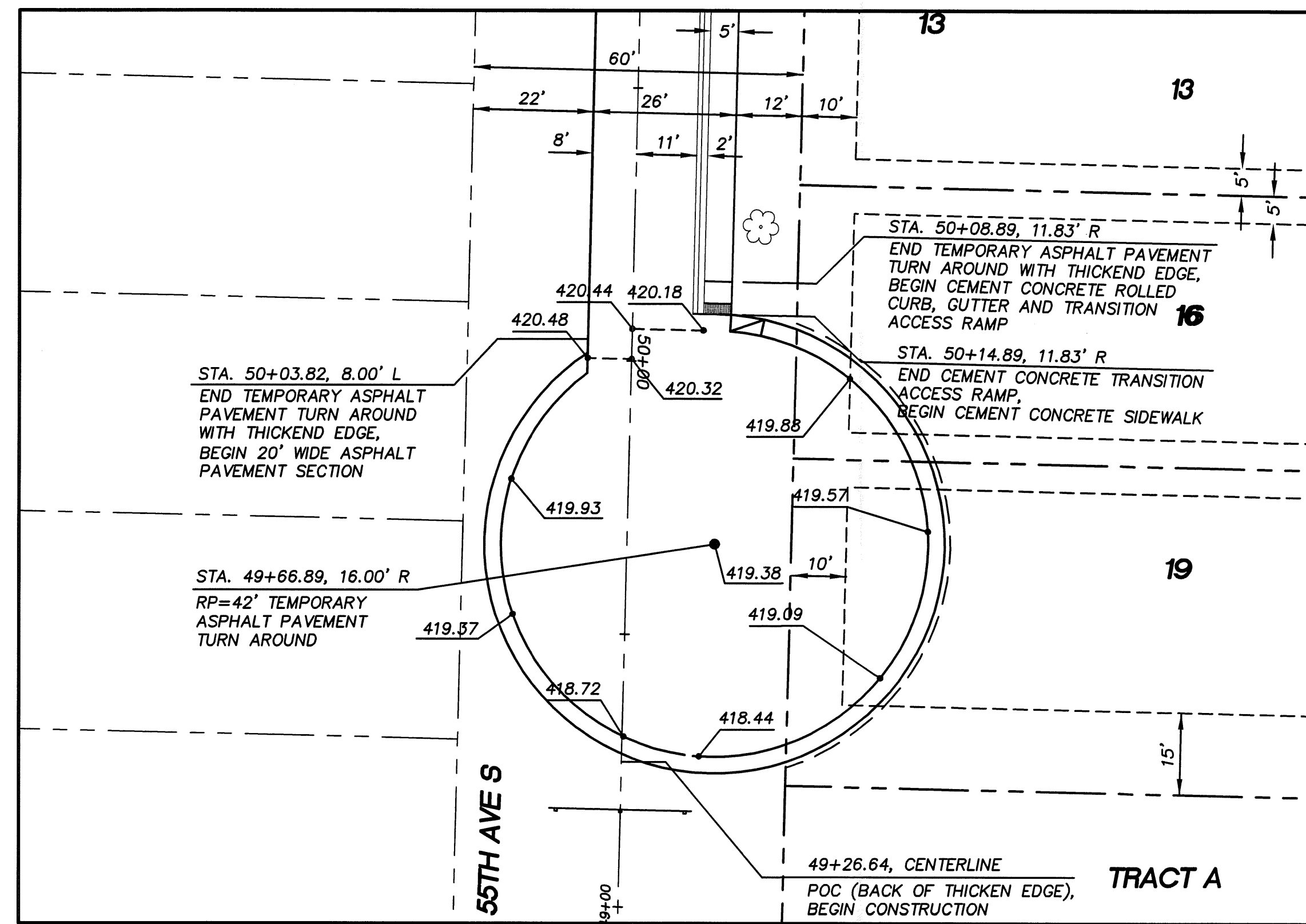
DETAIL 'D'



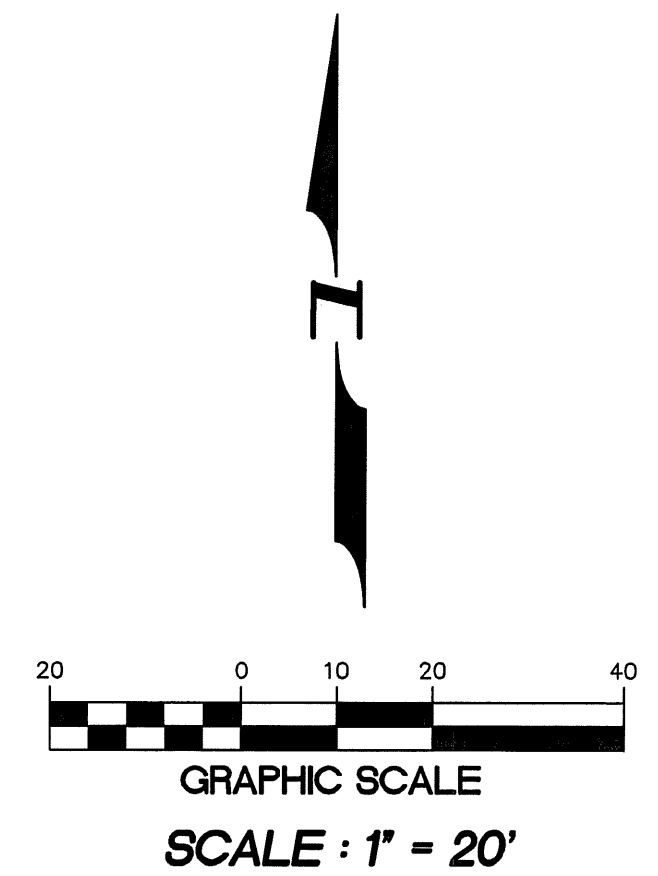
DETAIL 'E'



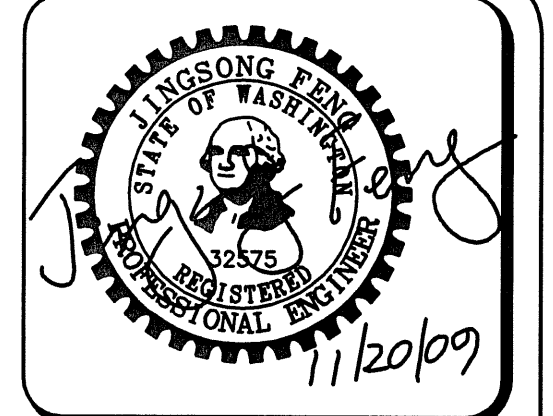
DETAIL 'F'



DETAIL 'G'



KING COUNTY D.D.E.S.	
Review Engineer	Completion Date
Senior Engineer	Completion Date
MOLLY A. JOHNSON, P.E. DEVELOPMENT ENGINEER	Approval Date
Comments:	



15445 53RD AVE. S.
SEATTLE, WA 98188
PHONE: (206) 431-7970
FAX: (206) 388-1648
WEB SITE: PACENG.COM

Pacific
Engineering
Design, LLC
Civil Engineering and
Planning Consultants

PEPPER HILL ESTATES
KING COUNTY, WA
FOR:
PACIFIC HOUSING GROUP I, LLC
1420 5TH AVE, SUITE 2200
SEATTLE, WA 98101
PHONE: (206) 521-9879 FAX: (206) 224-2880

PROJECT NO.: 05052
DRAWN BY: JQC/RRJ
ISSUE DATE: 06-22-07
SHEET REV.: 11-20-09

HORIZONTAL
AND VERTICAL
CONTROL
INTERSECTIONS
AND CUL-DE-SACS

05052D104-RW25-RW26.DWG
R26