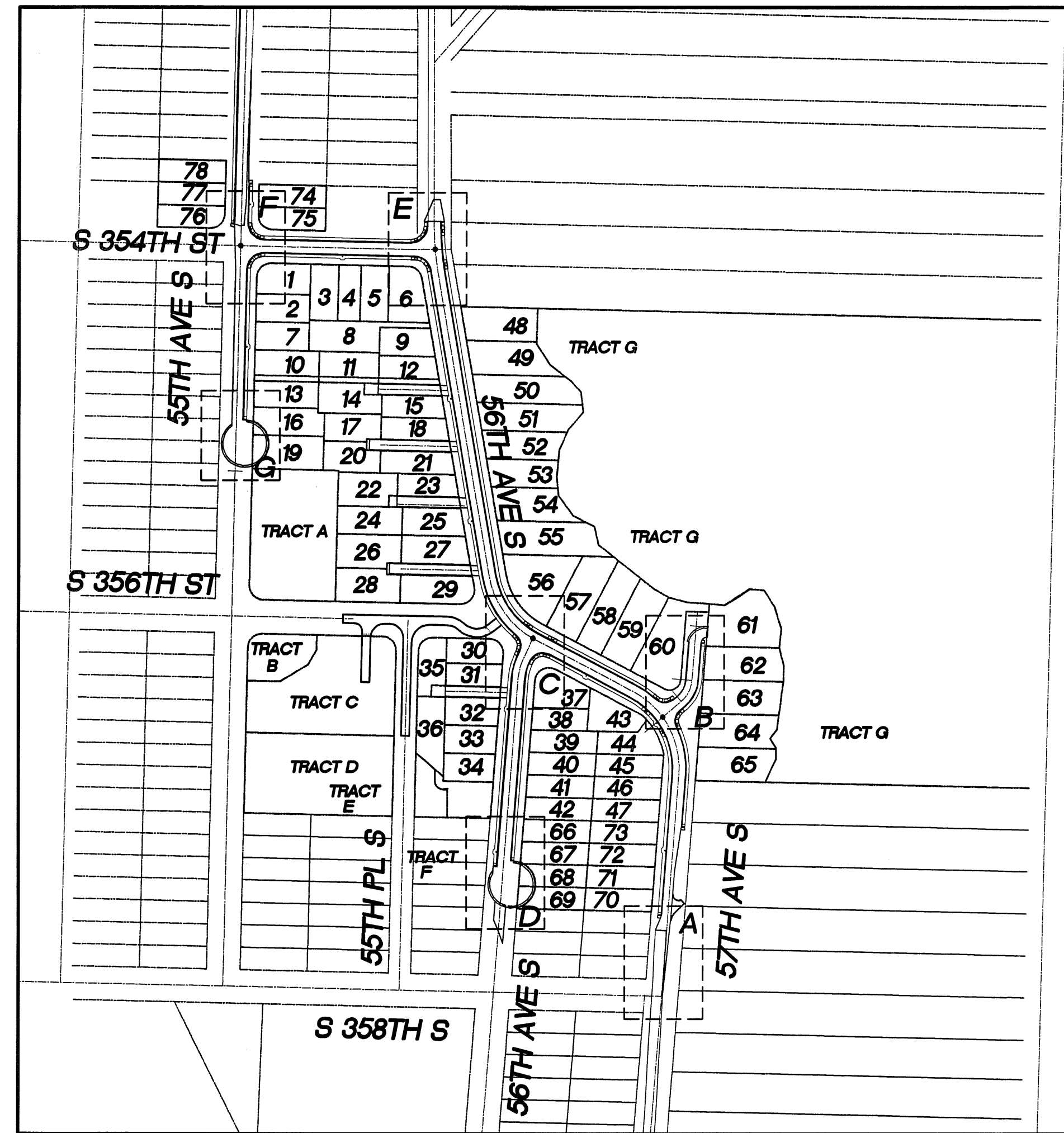
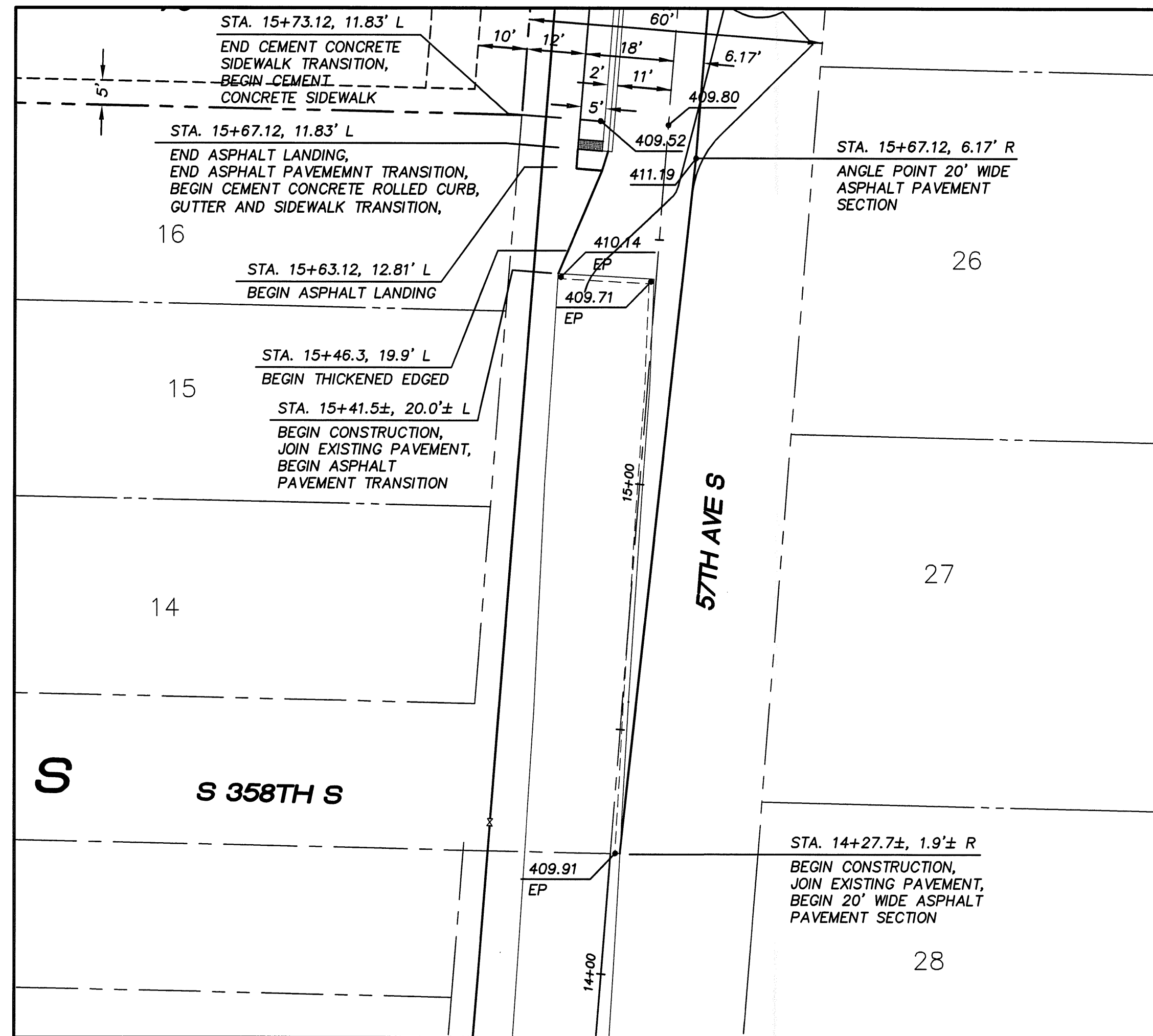


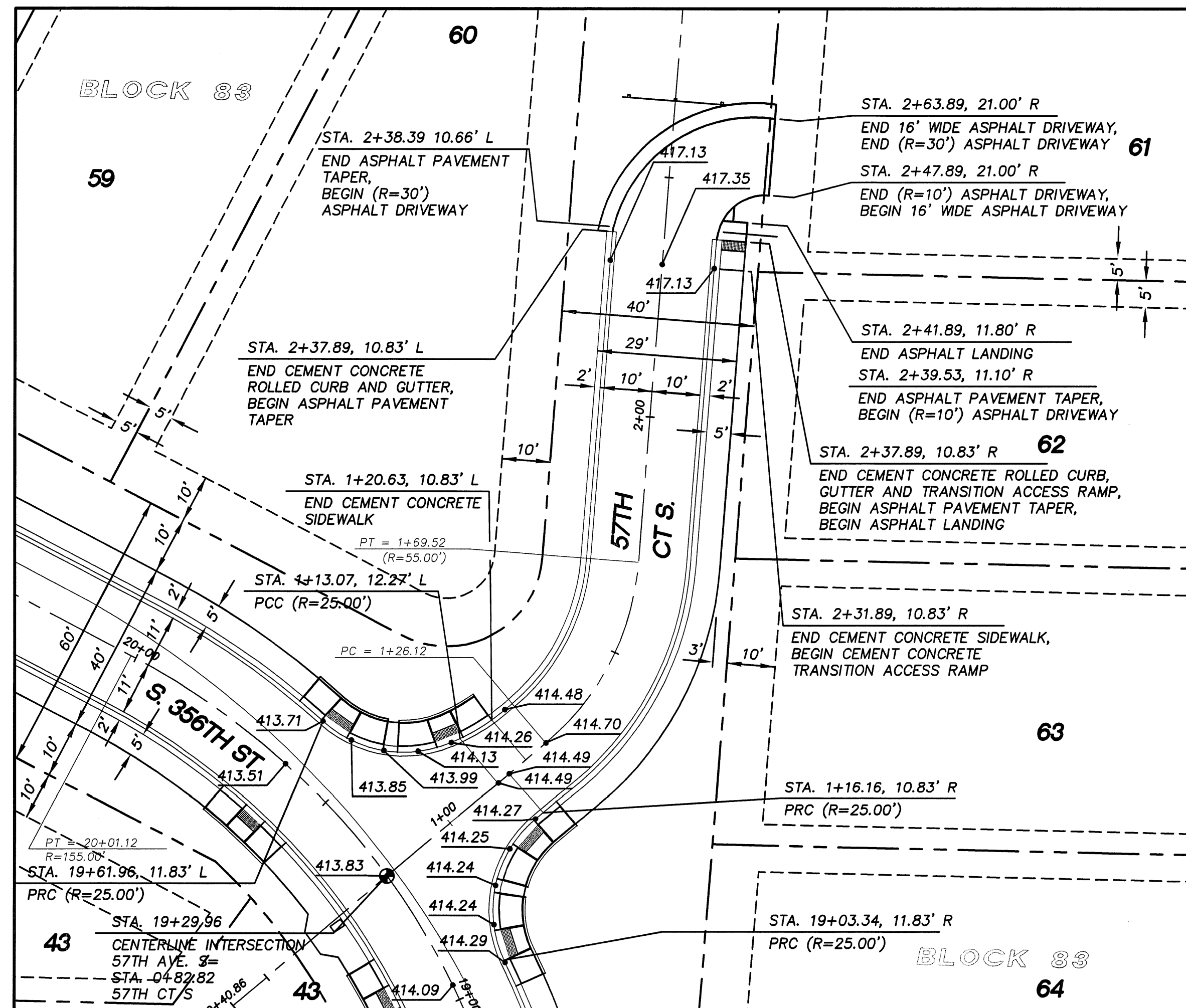
N.W. 1/4, SEC. 26, T. 21 N., R. 4 E., W.M.



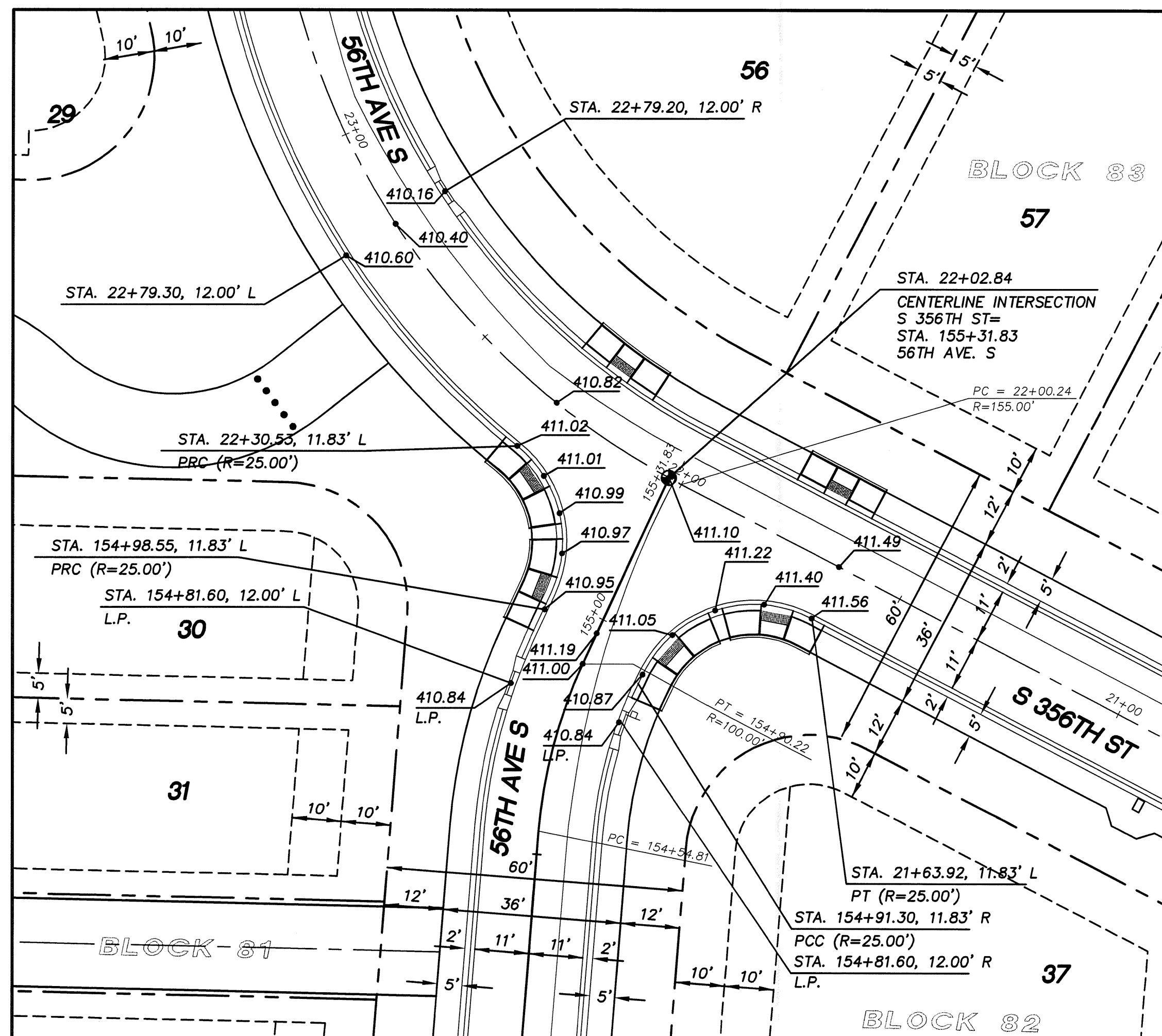
KEY MAP



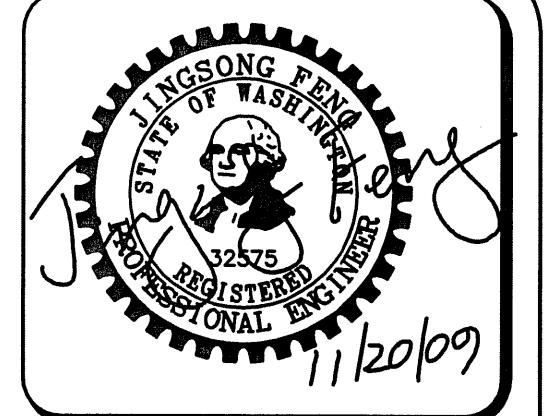
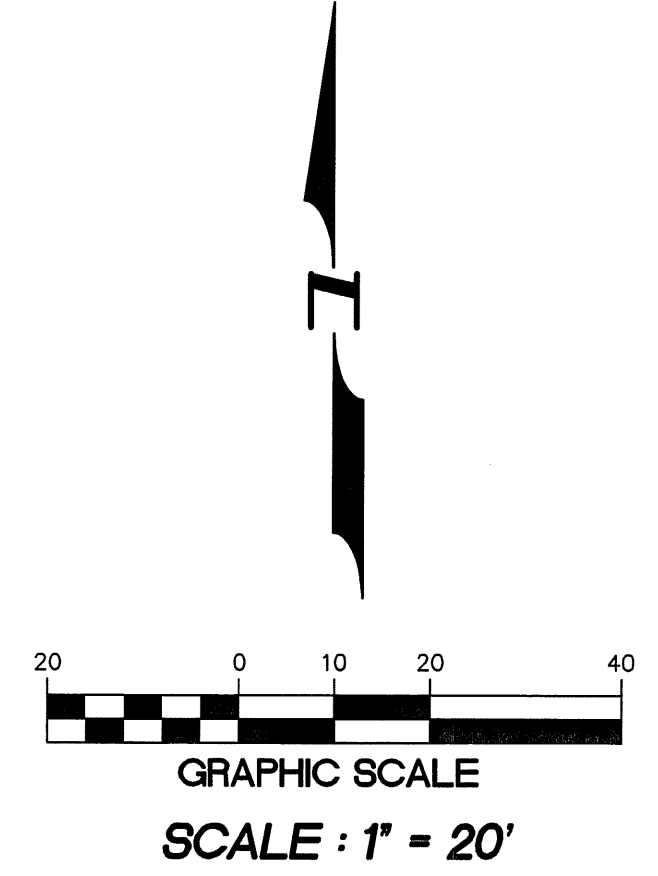
DETAIL 'A'



57TH AVE S DETAIL 'B'



DETAIL 'C'



15445 53RD AVE. S.  
SEATTLE, WA 98188  
PHONE: (206) 431-7970  
FAX: (206) 388-1648  
WEB SITE: PACENG.COM

Pacific  
Engineering  
Design, LLC  
Civil Engineering and  
Planning Consultants

PEPPER HILL ESTATES  
KING COUNTY, WA  
FOR:  
PACIFIC HOUSING GROUP I, LLC  
1420 5TH AVE, SUITE 2200  
SEATTLE, WA 98101  
PHONE: (206) 321-9879 FAX: (206) 224-2880

PROJECT NO.: 05052  
DRAWN BY: JQC/RRJ  
ISSUE DATE: 06-22-07  
SHEET REV.: 11-20-09

HORIZONTAL  
AND VERTICAL  
CONTROL  
INTERSECTIONS

KING COUNTY D.D.E.S.	
Review Engineer	Completion Date
Senior Engineer	Completion Date
MOLLY A. JOHNSON, P.E. DEVELOPMENT ENGINEER	Approval Date
Comments:	

05052D103--RW25--RW26.DWG  
**R25**