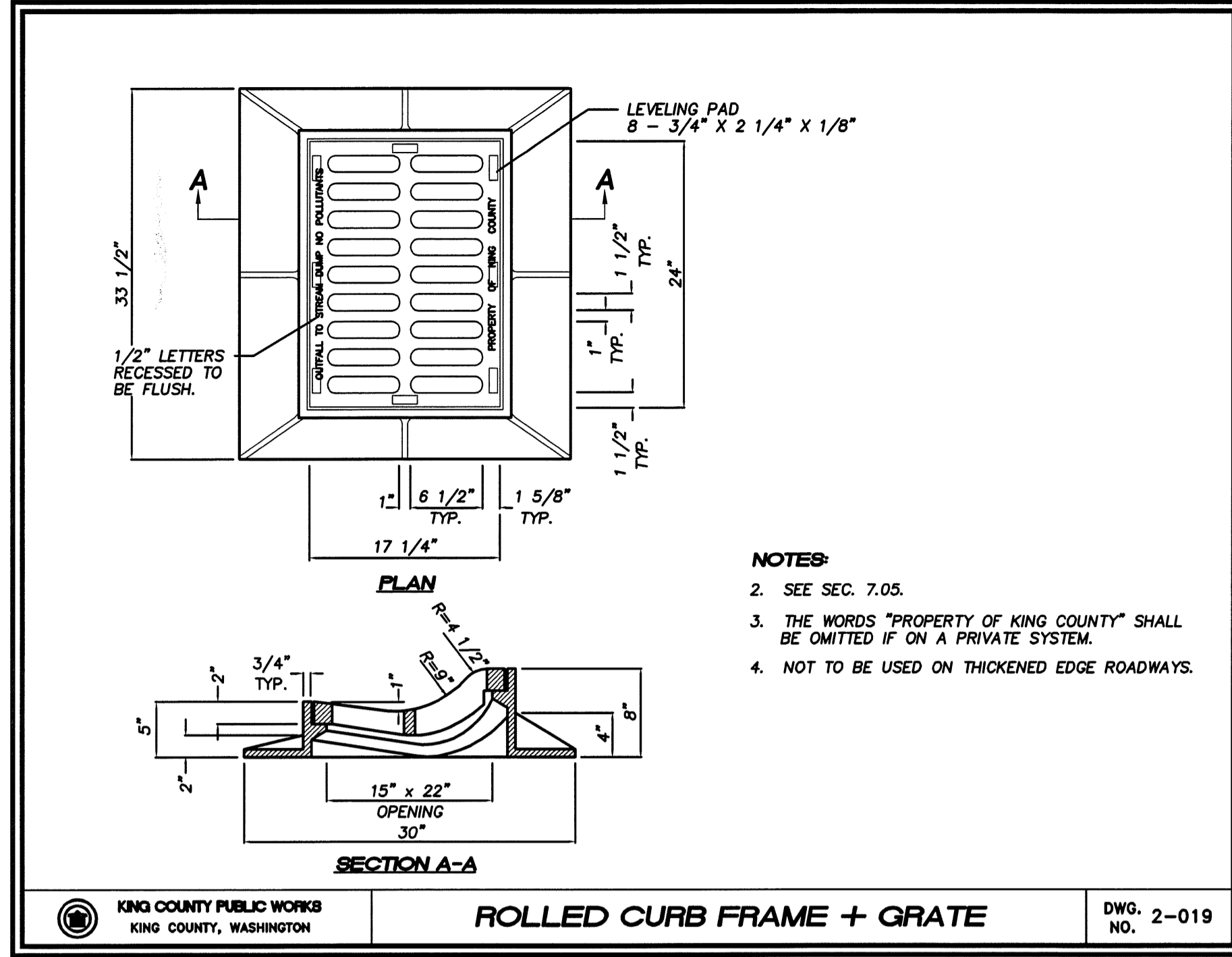
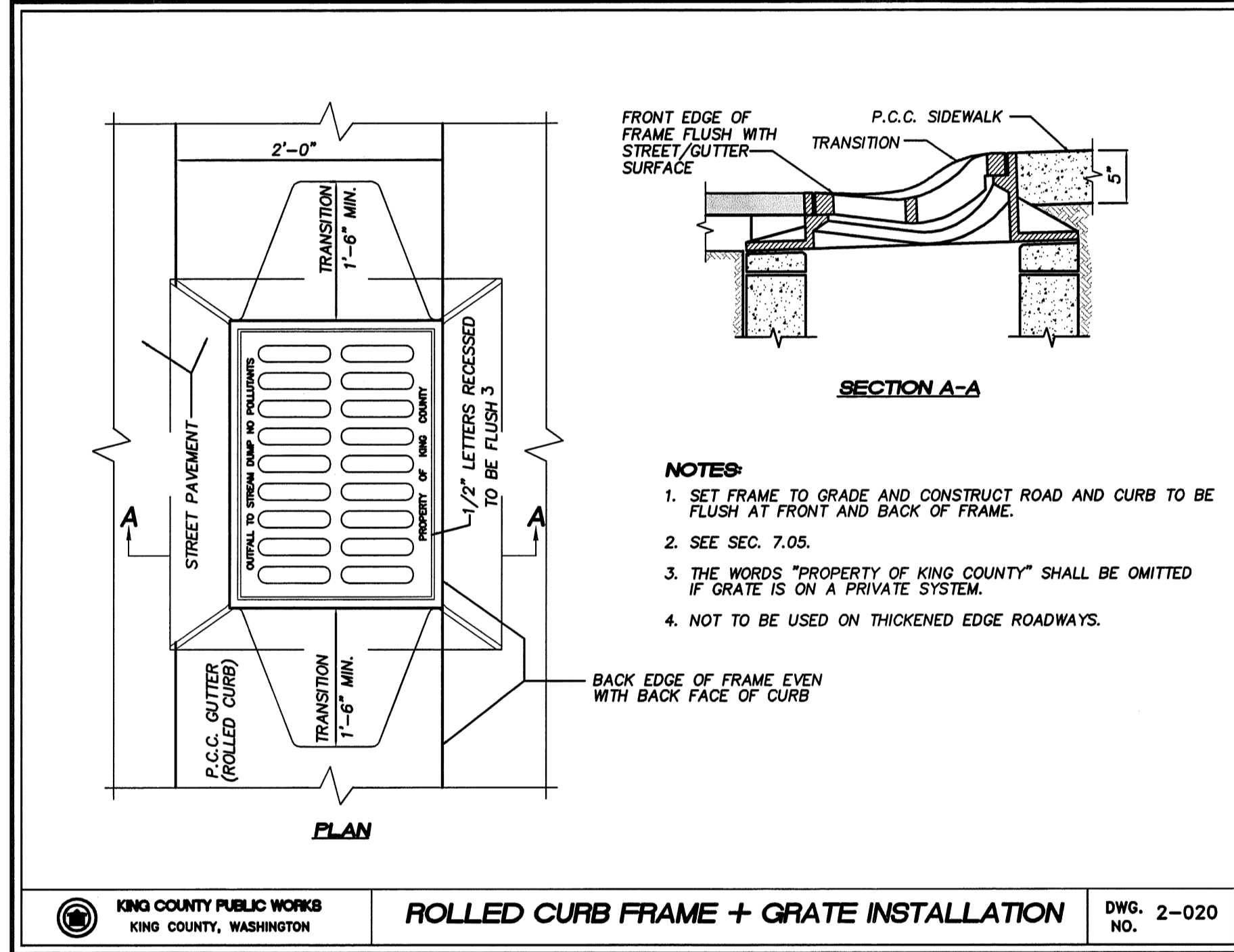


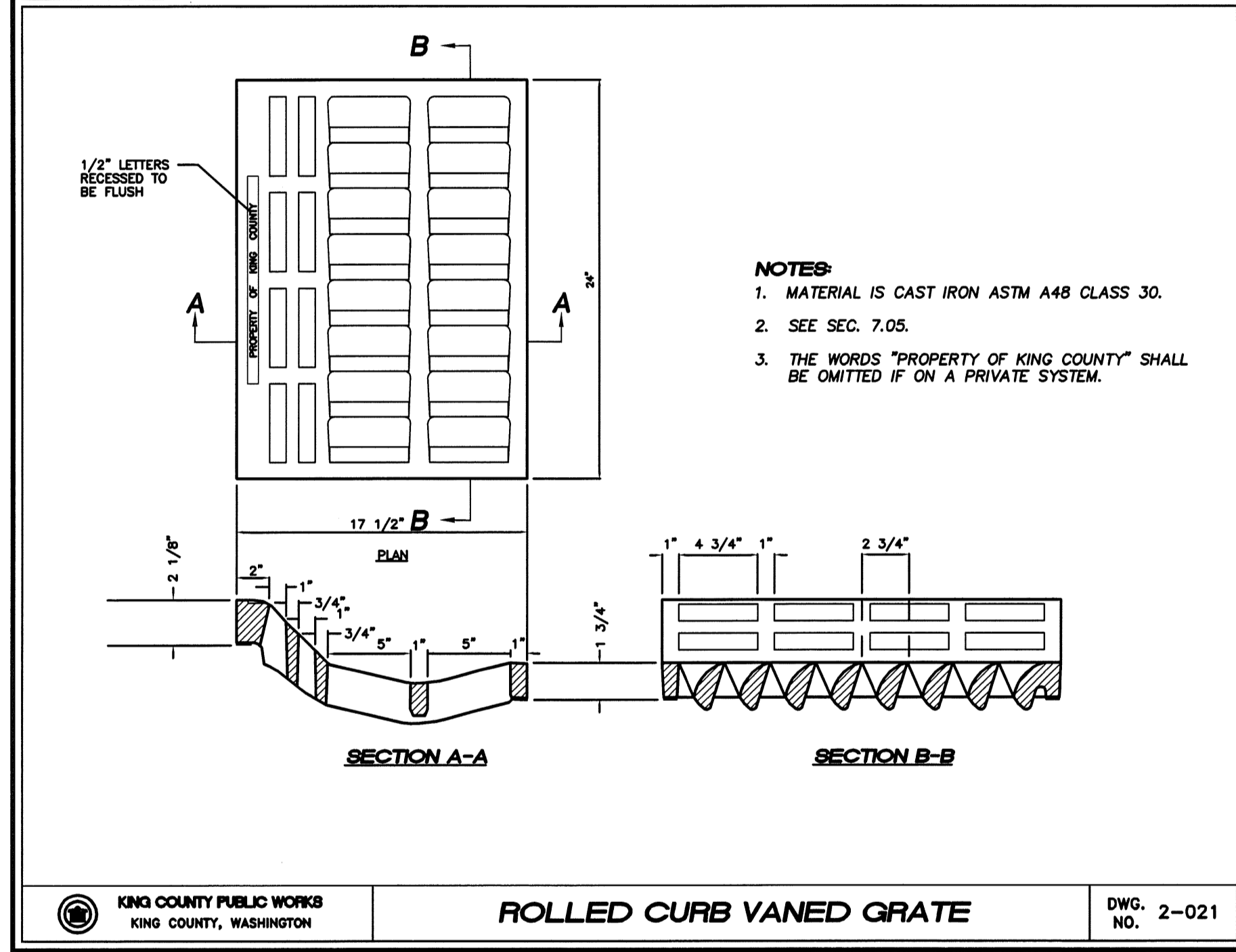
KING COUNTY PUBLIC WORKS
 KING COUNTY, WASHINGTON
 DWG. 2-023
 NO.



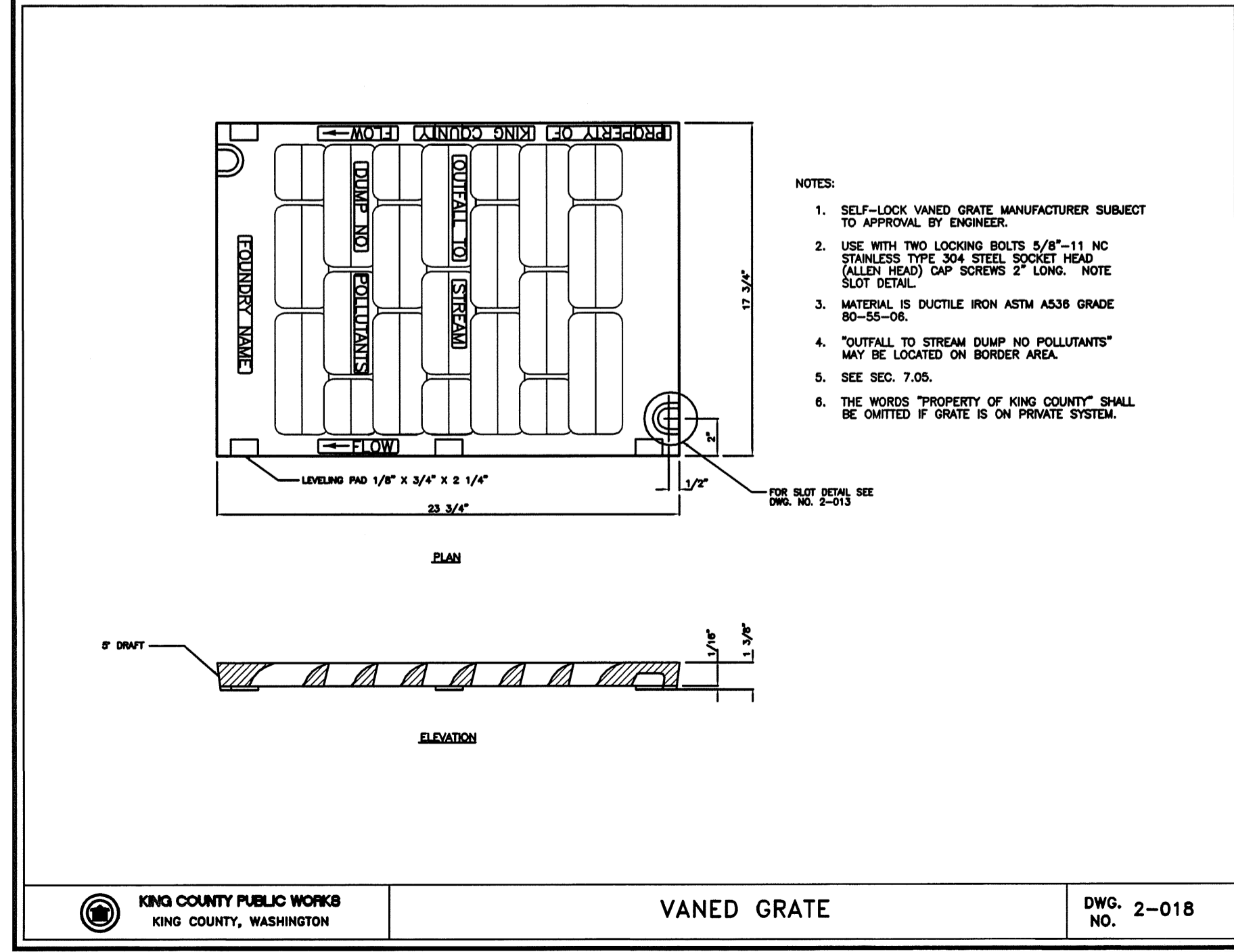
KING COUNTY PUBLIC WORKS
 KING COUNTY, WASHINGTON
 DWG. 2-019
 NO.



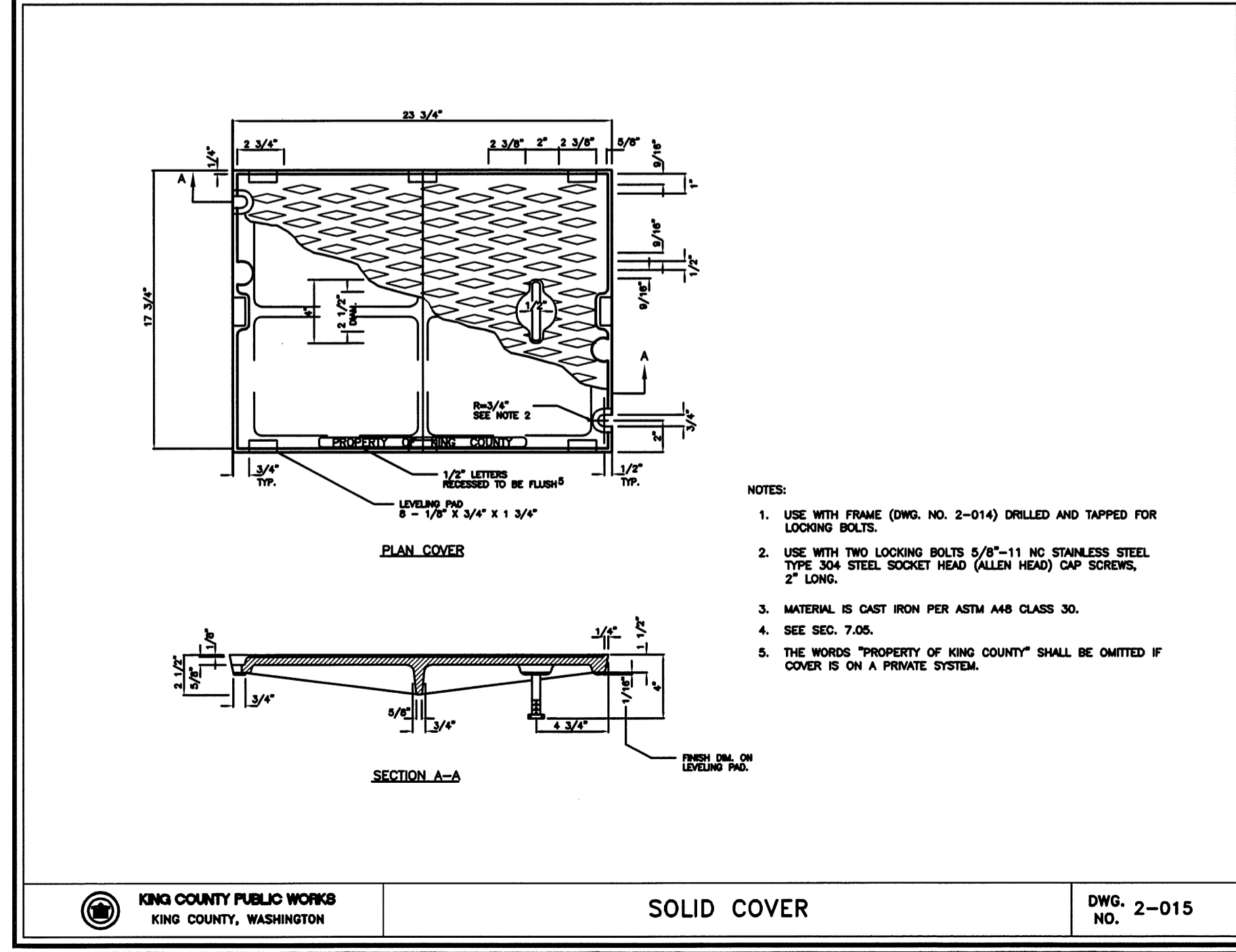
KING COUNTY PUBLIC WORKS
 KING COUNTY, WASHINGTON
 DWG. 2-020
 NO.



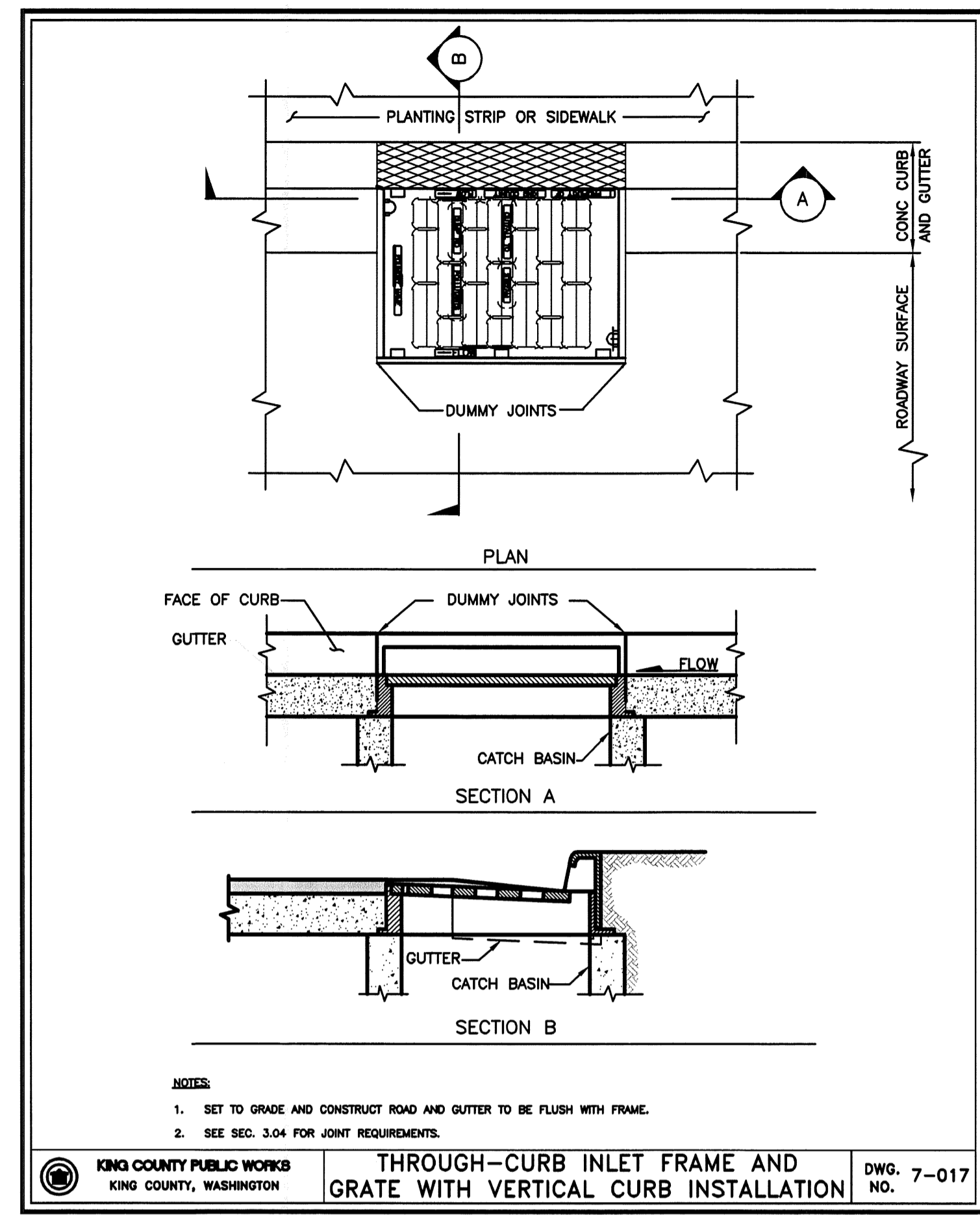
KING COUNTY PUBLIC WORKS
 KING COUNTY, WASHINGTON
 DWG. 2-021
 NO.



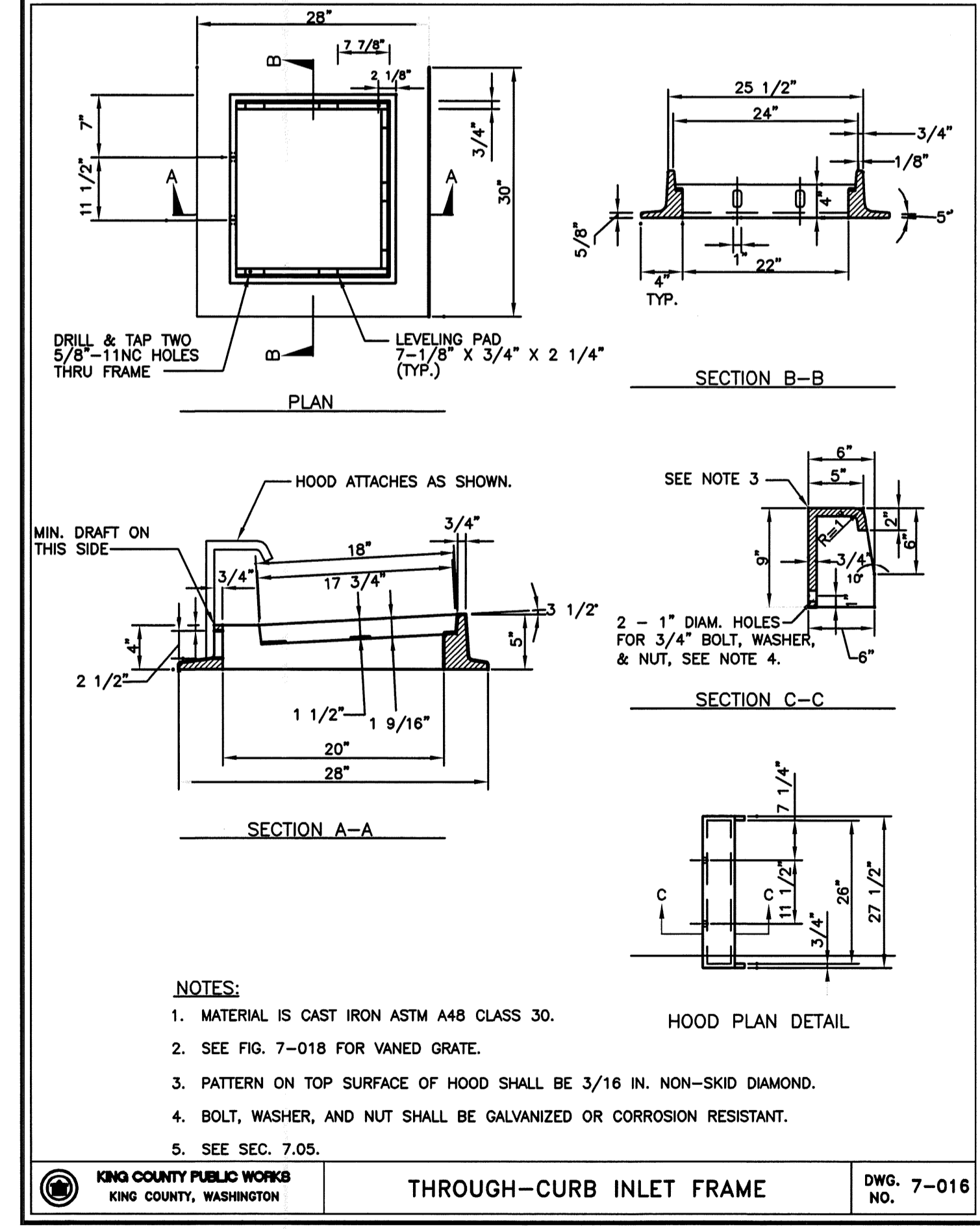
KING COUNTY PUBLIC WORKS
 KING COUNTY, WASHINGTON
 DWG. 2-018
 NO.



KING COUNTY PUBLIC WORKS
 KING COUNTY, WASHINGTON
 DWG. 2-015
 NO.

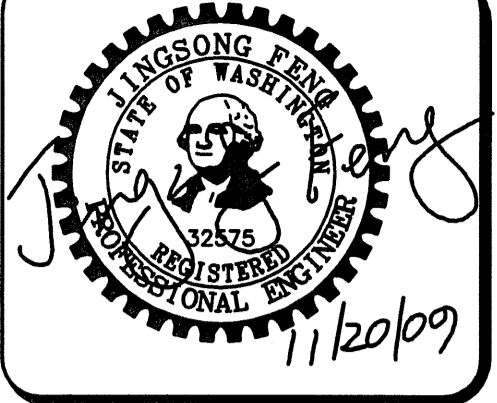


KING COUNTY PUBLIC WORKS
 KING COUNTY, WASHINGTON
 DWG. 7-017
 NO.



KING COUNTY PUBLIC WORKS
 KING COUNTY, WASHINGTON
 DWG. 7-016
 NO.

KING COUNTY D.D.E.S.	
Review Engineer	Completion Date
Senior Engineer	Completion Date
MOLLY A. JOHNSON, P.E. DEVELOPMENT ENGINEER	Approval Date
Comments:	



15445 53RD AVE. S.
 SEATTLE, WA 98188
 PHONE: (206) 431-7970
 FAX: (206) 388-1648
 WEB SITE: PACENG.COM

Pacific Engineering Design, LLC
 Civil Engineering and Planning Consultants

PEPPER HILL ESTATES
 KING COUNTY, WA.

FOR:
 PACIFIC HOUSING GROUP I, LLC
 1420 5TH AVE, SUITE 2200
 SEATTLE, WA 98101-3346
 PHONE: (206) 521-9979 FAX: (206) 224-2880

PROJECT NO.: 05052
 DRAWN BY: JGC/RRJ
 ISSUE DATE: 06-22-07
 SHEET REV.: 11-20-09

DETAILS (STORM DRAINAGE)

050520202-RW21-RW22.DWG
R22