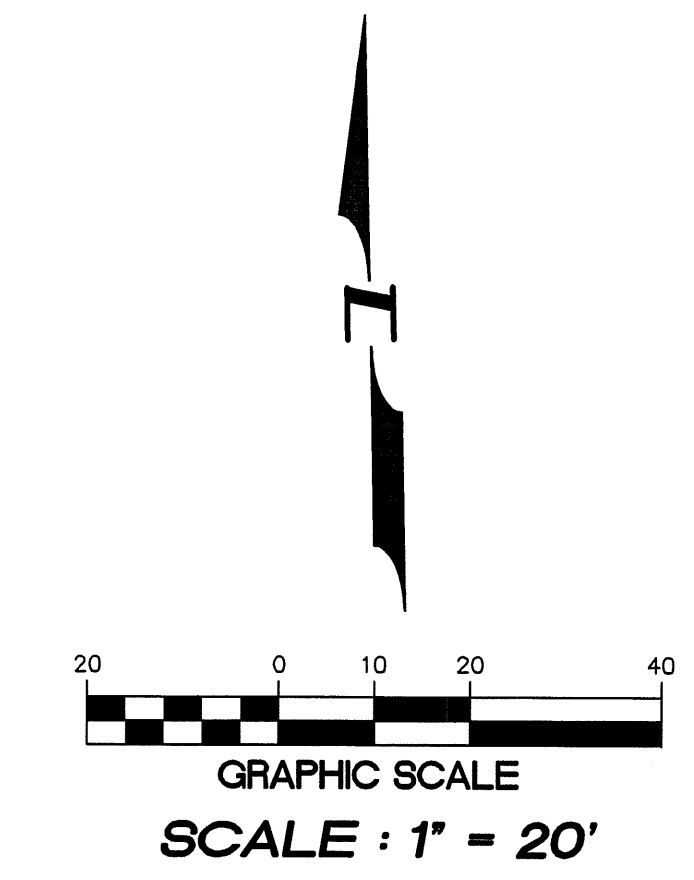
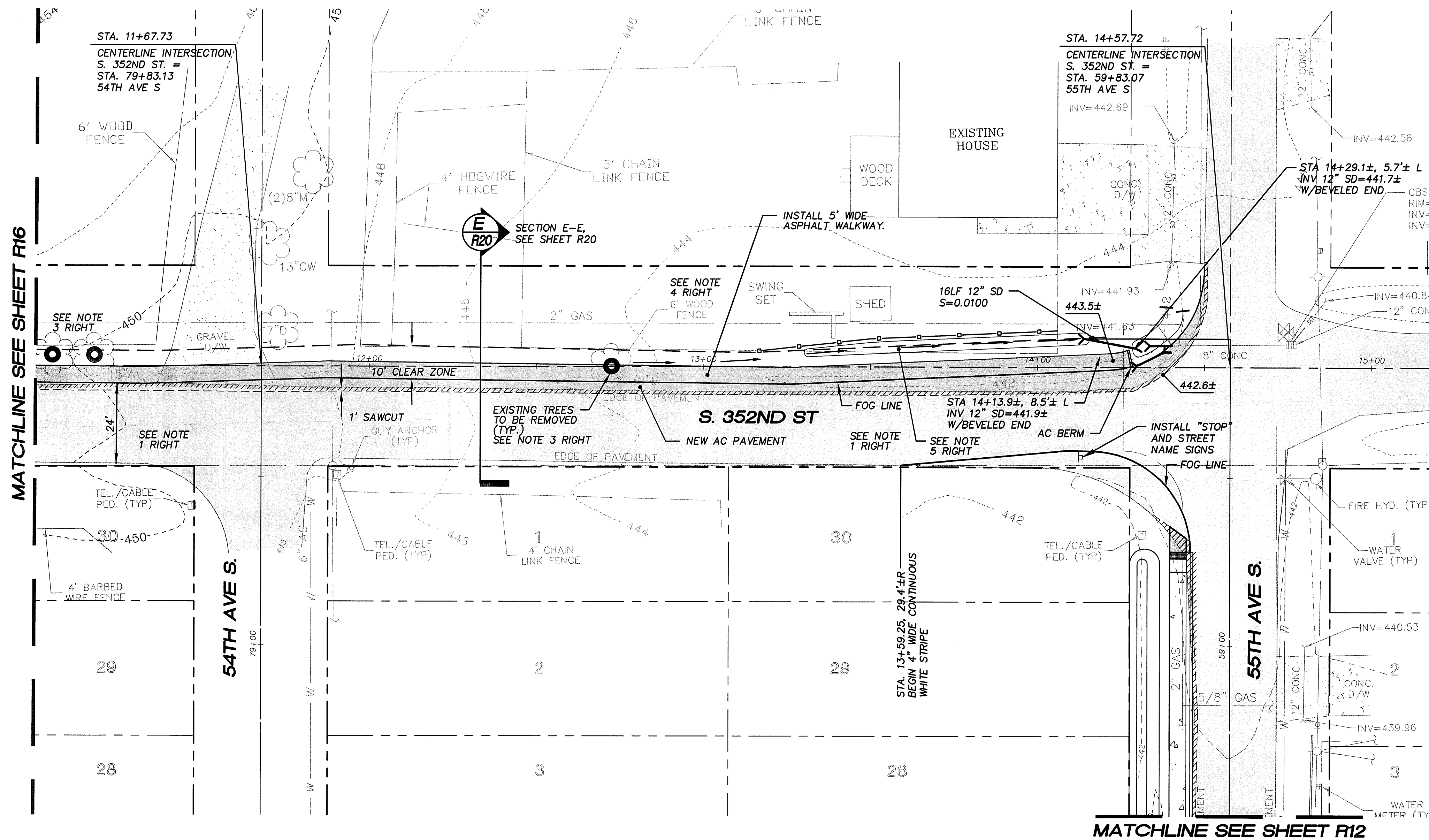
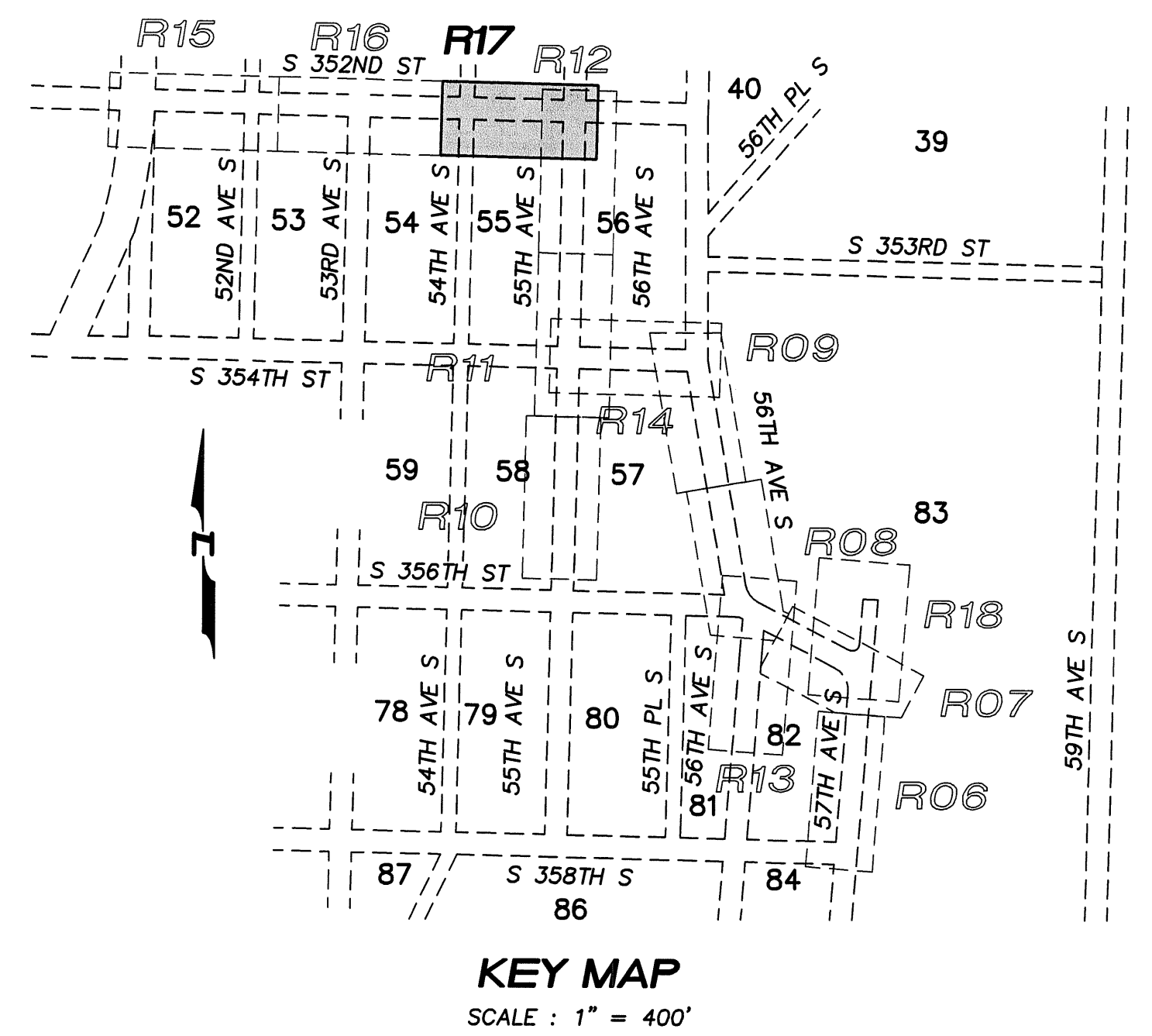
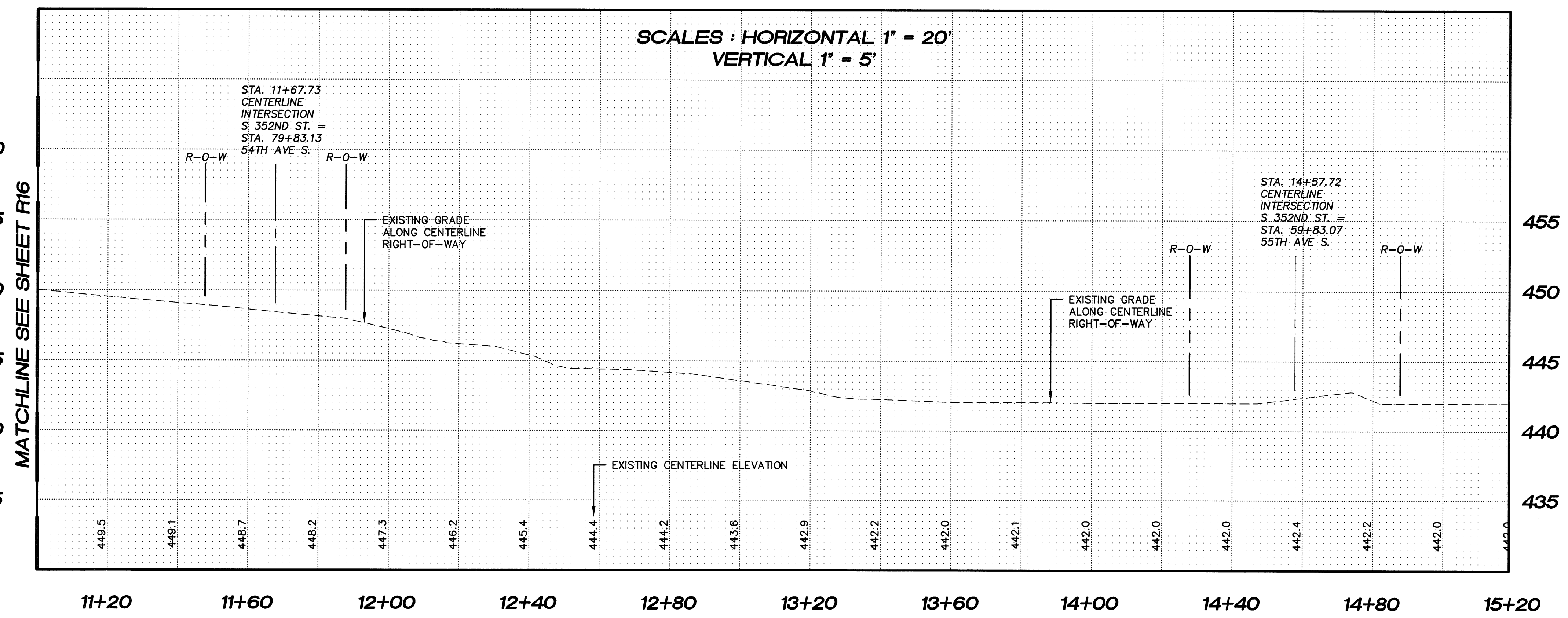


N.W. 1/4, SEC. 26, T. 21 N., R. 4 E., W.M.



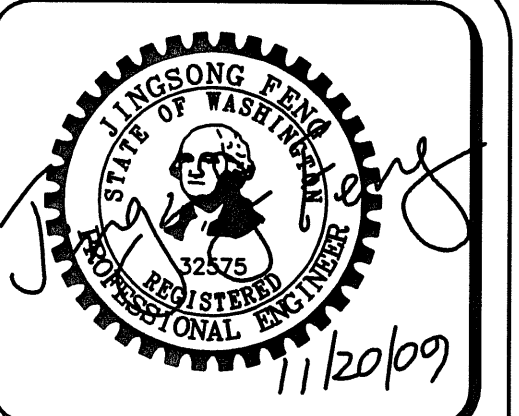
- NOTE :**
- FULL WIDTH OVERLAY REQUIRED PER KCRS SUBSECTION 4.01.F (THIS ROADWAY SEGMENT MAY BE SCHEDULED TO BE OVERLAID ONCE THE JOVITA HEIGHTS PROJECT TO THE NORTH IS COMPLETED.)
  - TREES IN ROADWAY 'CLEAR ZONE' SHALL BE REMOVED PER KING COUNTY FIG. 5-010.
  - RELOCATE EXISTING 6' WOOD FENCE OUTSIDE S. 352ND IMPROVEMENTS.
  - RELOCATE EXISTING DRAINAGE DITCH BEHIND PROPOSED ASPHALT SIDEWALK.

**PLAN NOTE :** PER KCRS SECTION 4.01, A 1.5 INCH FULL WIDTH OVERLAY SHALL BE REQUIRED. APPROPRIATE REPAIRS TO THE EXISTING SUBGRADE, BASE MATERIAL, SURFACING AND PRE-LEVEL MAY BE REQUIRED PRIOR TO PLACING THE OVERLAY. THE OVERLAY MAY BE WAIVED ONLY UPON WRITTEN REQUEST AND AFTER AN EVALUATION OF PAVEMENT CONDITIONS AND/OR CHANNELIZATION REQUIREMENTS HAS BEEN COMPLETED AND APPROVED BY THE COUNTY ROAD ENGINEER OR DEVELOPMENT ENGINEER.



**NOTE :**  
ALL STORM PIPE LINES TO BE N-12 UNLESS OTHERWISE NOTED.

KING COUNTY D.D.E.S.	
Review Engineer	Completion Date
Senior Engineer	Completion Date
MOLLY A. JOHNSON, P.E. DEVELOPMENT ENGINEER	
Comments:	



15445 53RD AVE. S.  
SEATTLE, WA 98188  
PHONE: (206) 431-7970  
FAX: (206) 388-1648  
WEB SITE: PACENG.COM

**Pacific Engineering Design, LLC**  
Civil Engineering and Planning Consultants

PEPPER HILL ESTATES  
KING COUNTY, WA.

FOR:  
PACIFIC HOUSING GROUP I, LLC  
1420 5TH AVE, SUITE 2200  
SEATTLE, WA 98101-5446  
PHONE: (206) 521-5879, FAX: (206) 224-2880

PROJECT NO.: 05052  
DRAWN BY: JGC/RRJ  
ISSUE DATE: 06-22-07  
SHEET REV.: 11-20-09

S. 352ND ST  
ROAD PLAN  
AND PROFILE  
STA. 11+00.00  
TO STA. 15+20.00±  
SUBCOLLECTOR

05052R13-R17.DWG  
**R17**