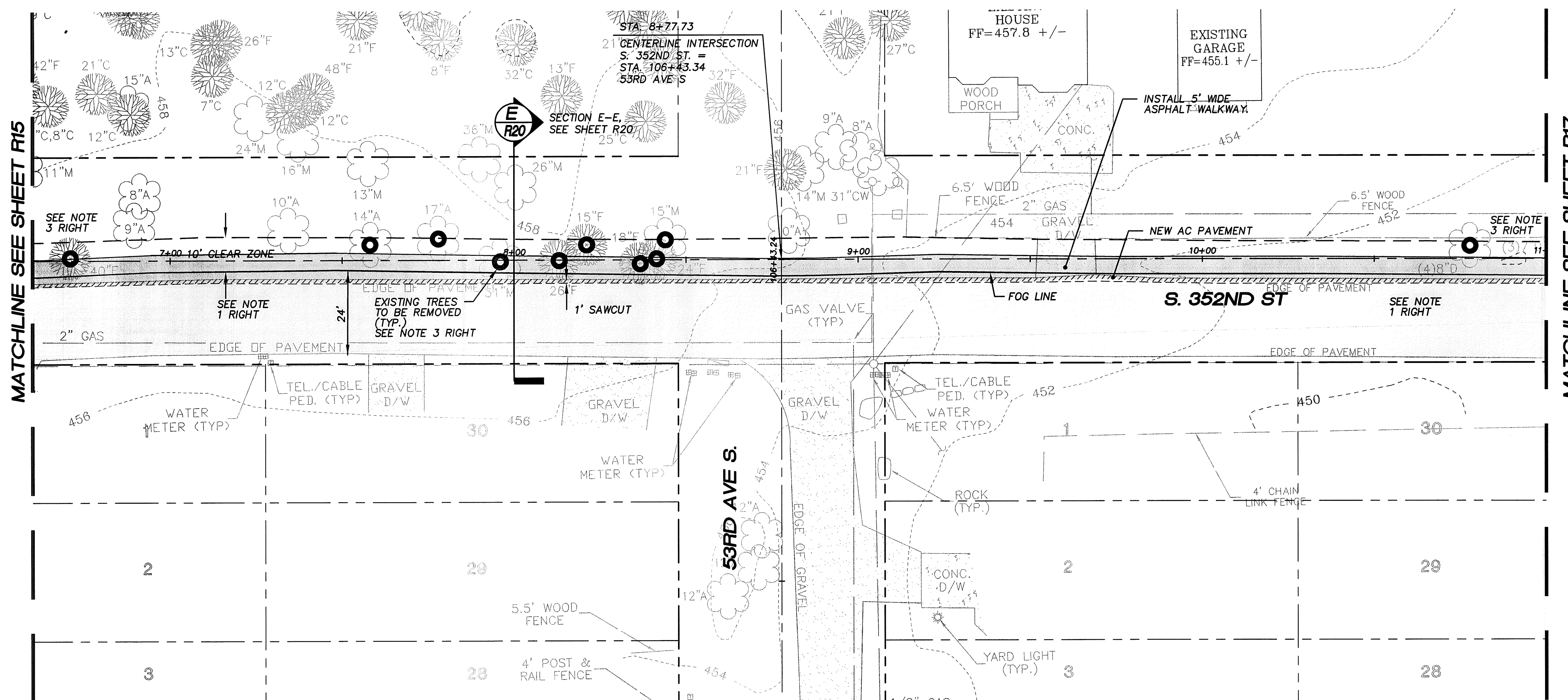


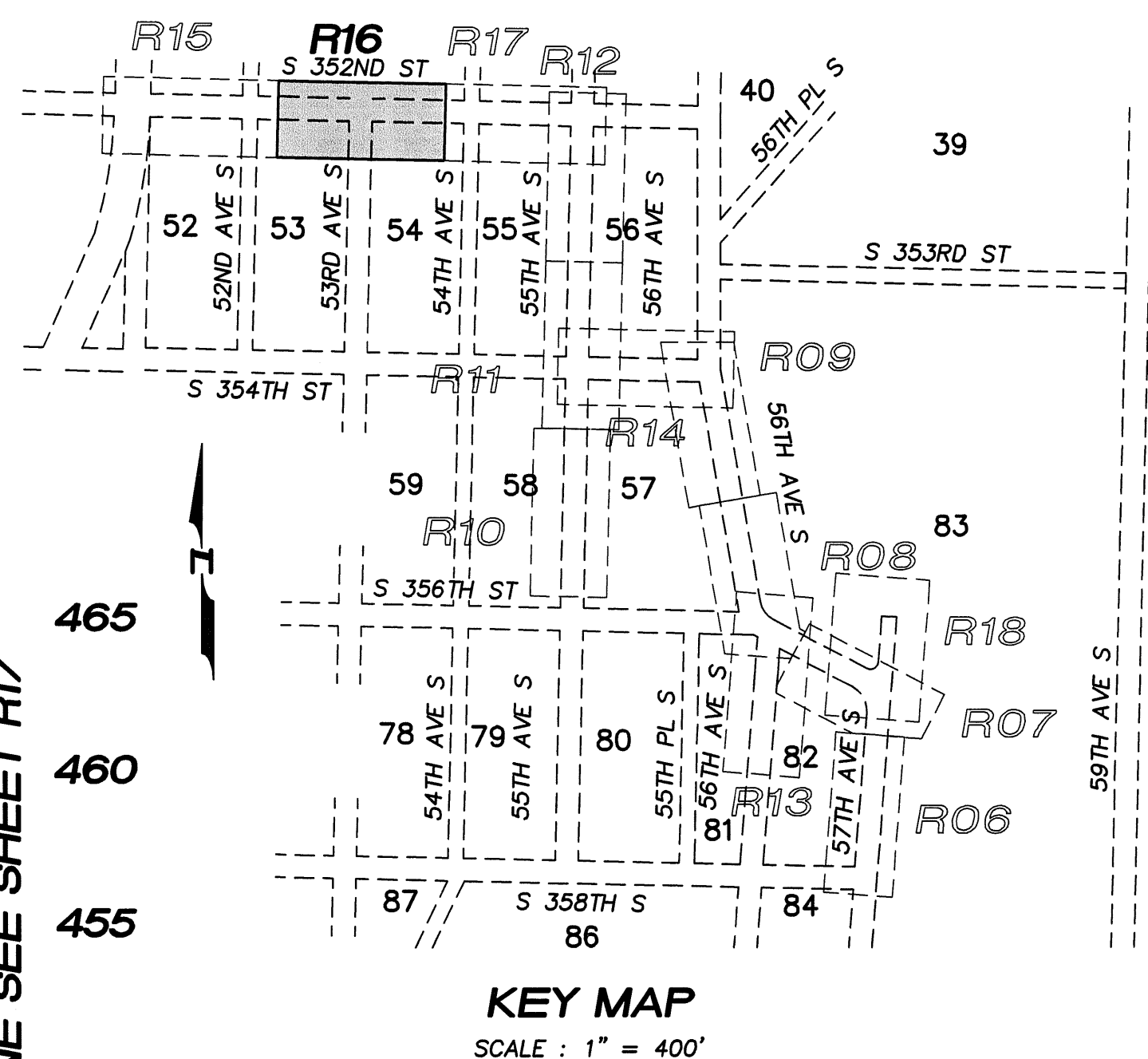
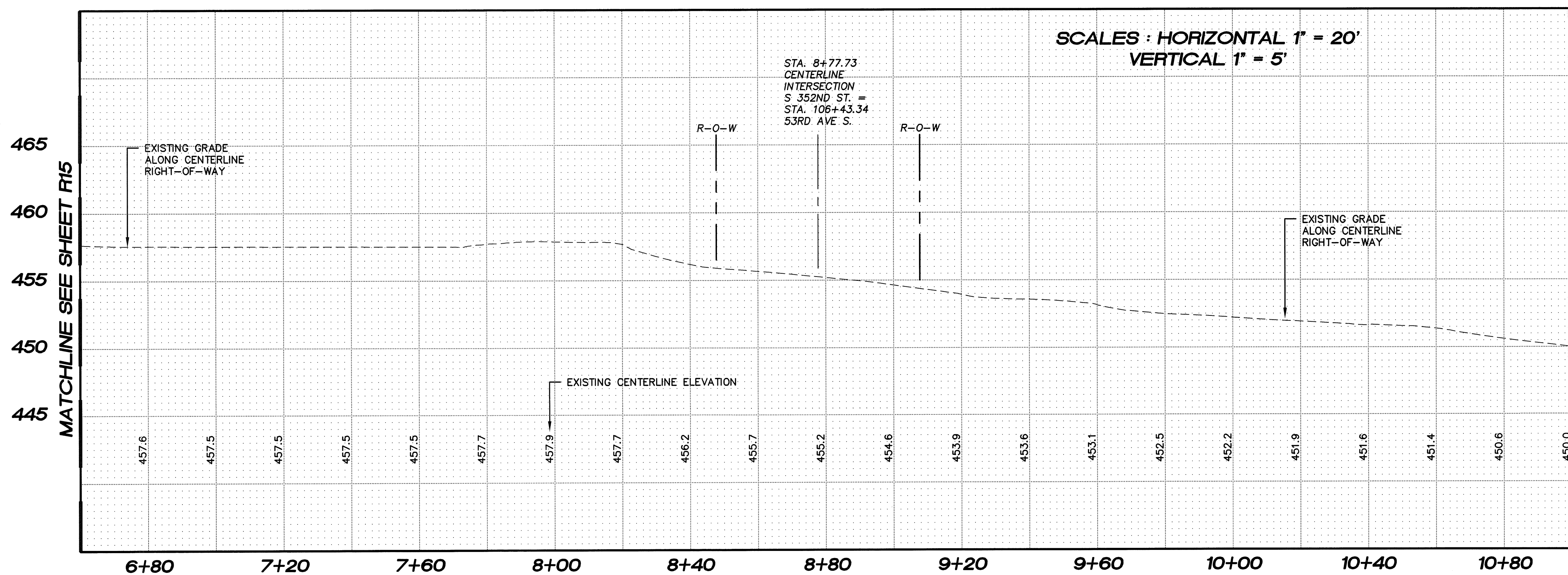
N.W. 1/4, SEC. 26, T. 21 N., R. 4 E., W.M.



NOTE :

1. FULL WIDTH OVERLAY REQUIRED PER KCRS SUBSECTION 4.01.F (THIS ROADWAY SEGMENT MAY BE SCHEDULED TO BE OVERLAID ONCE THE JOVITA HEIGHTS PROJECT TO THE NORTH IS COMPLETED.)
2. TREES IN ROADWAY 'CLEAR ZONE' SHALL BE REMOVED PER KING COUNTY FIG. 5-010.

PLAN NOTE : PER KCRS SECTION 4.01, A 1.5 INCH FULL WIDTH OVERLAY SHALL BE REQUIRED. APPROPRIATE REPAIRS TO THE EXISTING SUBGRADE, BASE MATERIAL, SURFACING AND PRE-LEVEL MAY BE REQUIRED PRIOR TO PLACING THE OVERLAY. THE OVERLAY MAY BE WAIVED ONLY UPON WRITTEN REQUEST AND AFTER AN EVALUATION OF PAVEMENT CONDITIONS AND/OR CHANNELIZATION REQUIREMENTS HAS BEEN COMPLETED AND APPROVED BY THE COUNTY ROAD ENGINEER OR DEVELOPMENT ENGINEER.



NOTE :

ALL STORM PIPE LINES TO BE N-12 UNLESS OTHERWISE NOTED.

KING COUNTY D.D.E.S.	
Review Engineer	Completion Date
Senior Engineer	Completion Date
MOLLY A. JOHNSON, P.E. DEVELOPMENT ENGINEER	
Comments:	



15445 53RD AVE. S.
SEATTLE, WA 98188
PHONE: (206) 431-7970
FAX: (206) 388-1648
WEB SITE: PACENG.COM

Pacific
Engineering
Design, LLC
Civil Engineering and
Planning Consultants

PEPPER HILL ESTATES
KING COUNTY, WA.

FOR:
PACIFIC HOUSING GROUP I, LLC
1420 5TH AVE, SUITE 2200
SEATTLE, WA 98101-1346
PHONE: (206) 521-9979, FAX: (206) 224-2880

PROJECT NO.: 05052
DRAWN BY: JGC/RRJ
ISSUE DATE: 06-22-07
SHEET REV.: 11-20-09

S. 352ND ST
ROAD PLAN
AND PROFILE
STA. 6+60.00
TO STA. 11+00.00
SUBCOLLECTOR

05052RD12-R16.DWG
R16