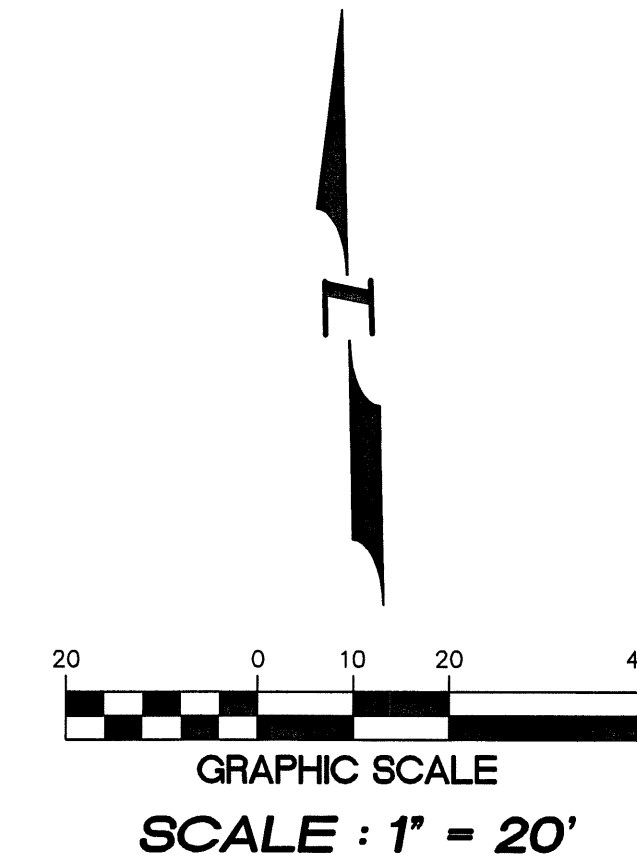
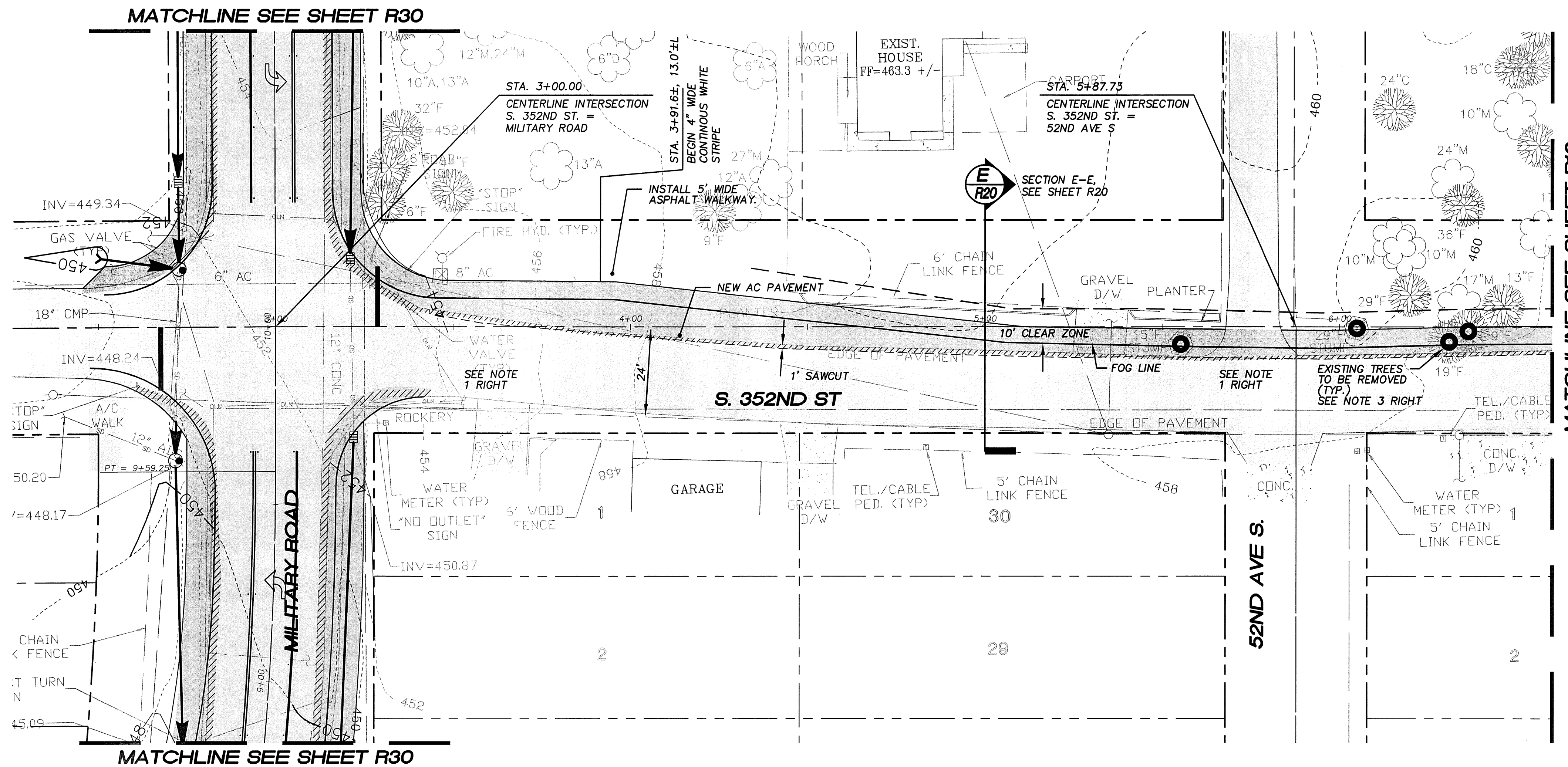
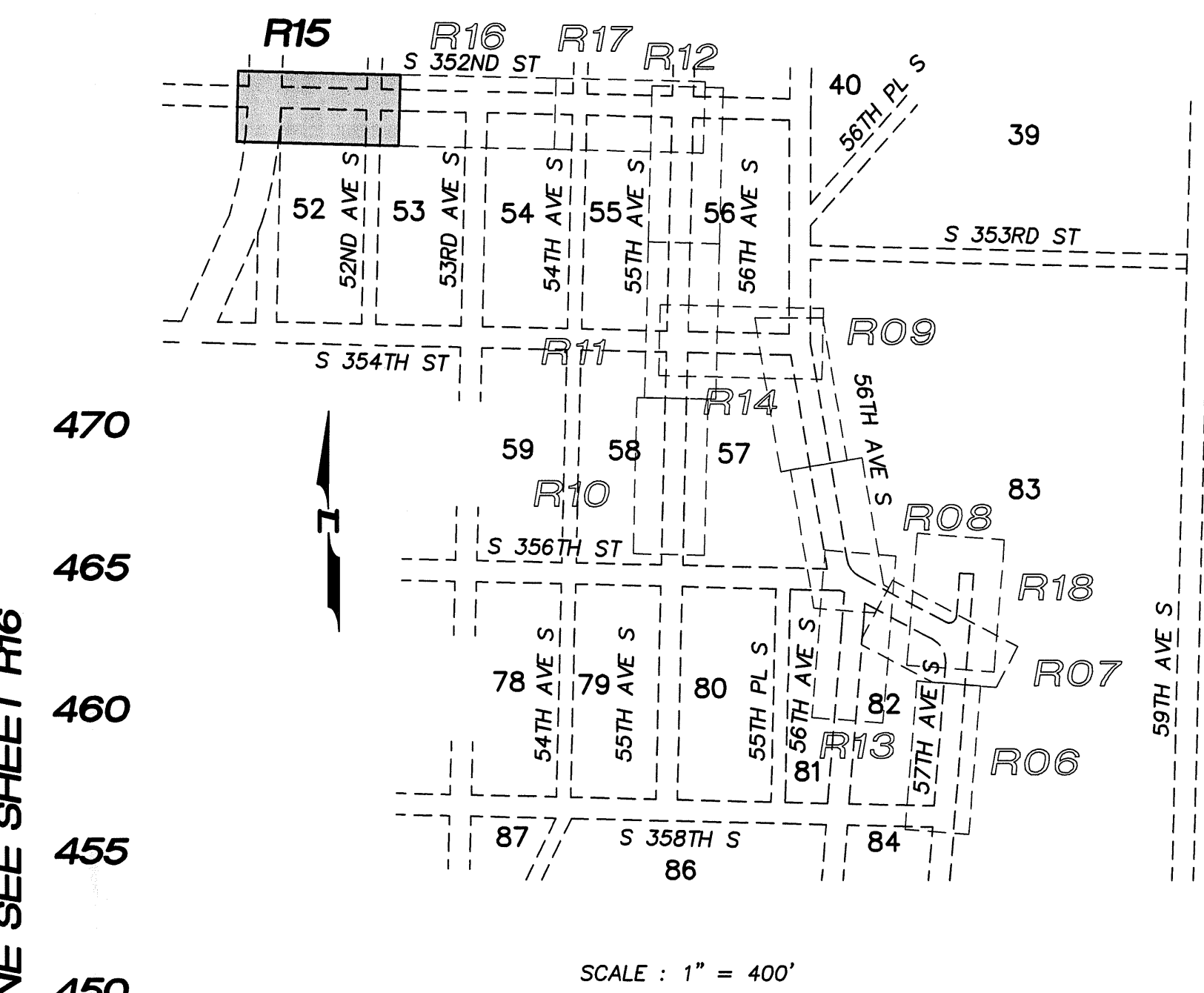
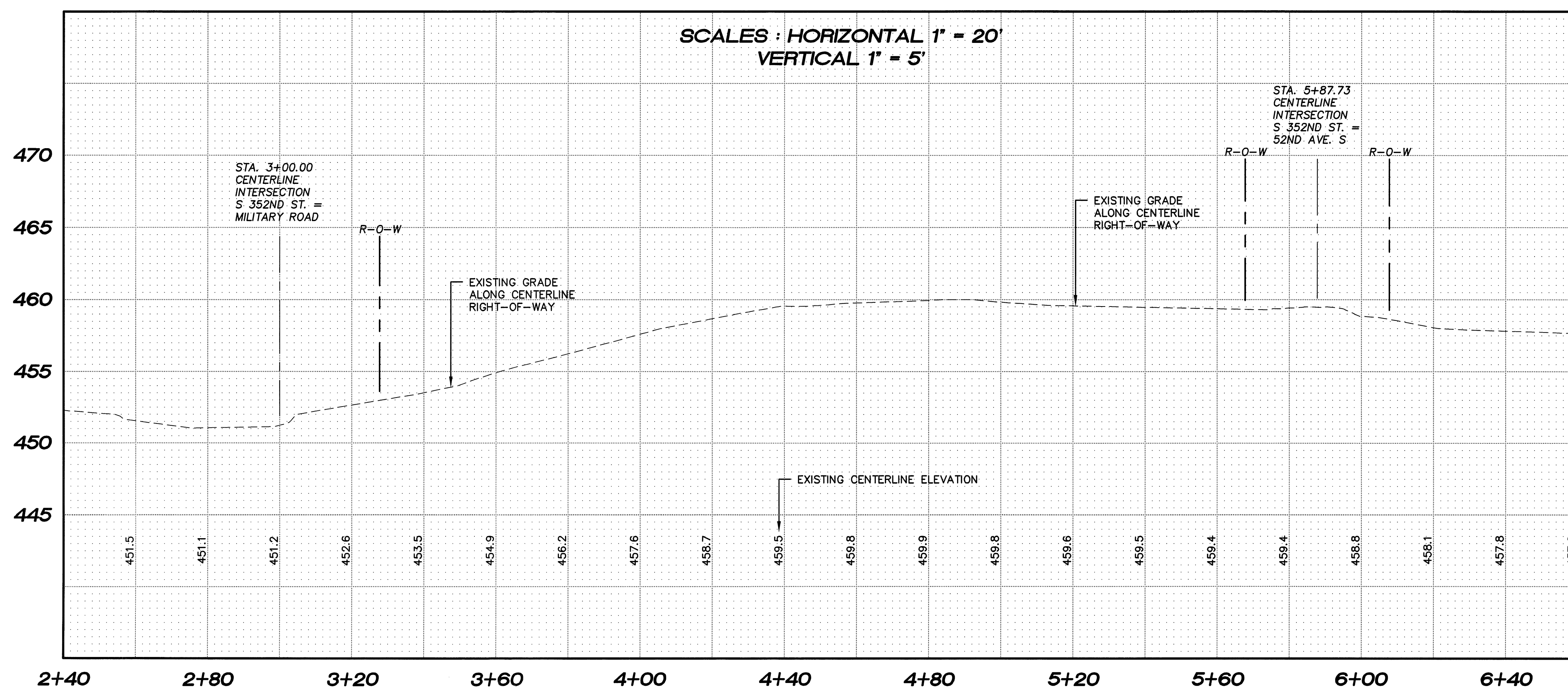


N.W. 1/4, SEC. 26, T. 21 N., R. 4 E., W.M.

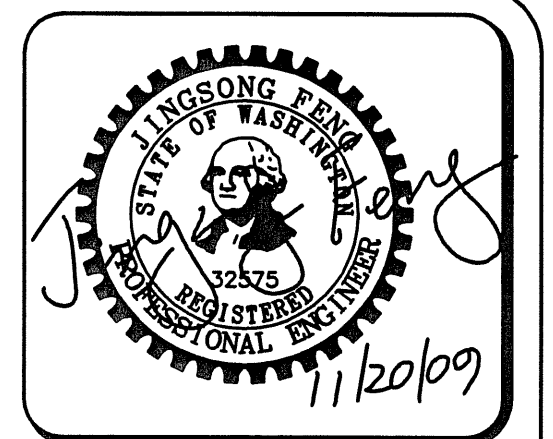


- NOTE :**
- FULL WIDTH OVERLAY REQUIRED PER KCRS SUBSECTION 4.01.F (THIS ROADWAY SEGMENT MAY BE SCHEDULED TO BE OVERLAID ONCE THE JOVITA HEIGHTS PROJECT TO THE NORTH IS COMPLETED.)
 - TREES IN ROADWAY 'CLEAR ZONE' SHALL BE REMOVED PER KING COUNTY FIG. 5-010.

PLAN NOTE : PER KCRS SECTION 4.01, A 1.5 INCH FULL WIDTH OVERLAY SHALL BE REQUIRED. APPROPRIATE REPAIRS TO THE EXISTING SUBGRADE, BASE MATERIAL, SURFACING AND PRE-LEVEL MAY BE REQUIRED PRIOR TO PLACING THE OVERLAY. THE OVERLAY MAY BE WAIVED ONLY UPON WRITTEN REQUEST AND AFTER AN EVALUATION OF PAVEMENT CONDITIONS AND/OR CHANNELIZATION REQUIREMENTS HAS BEEN COMPLETED AND APPROVED BY THE COUNTY ROAD ENGINEER OR DEVELOPMENT ENGINEER.



- NOTE :**
ALL STORM PIPE LINES TO BE N-12 UNLESS OTHERWISE NOTED.
- | | |
|--|-----------------|
| KING COUNTY D.D.E.S. | |
| Review Engineer | Completion Date |
| Senior Engineer | Completion Date |
| MOLLY A. JOHNSON, P.E.
DEVELOPMENT ENGINEER | |
| Comments: | |



15445 53RD AVE. S.
SEATTLE, WA 98188
PHONE: (206) 431-7970
FAX: (206) 388-1648
WEB SITE: PACENG.COM

Pacific Engineering Design, LLC
Civil Engineering and Planning Consultants

PEPPER HILL ESTATES
KING COUNTY, WA

FOR:
PACIFIC HOUSING GROUP I, LLC
1420 5TH AVE, SUITE 2200
SEATTLE, WA 98101-5346
PHONE: (206) 521-9979 | FAX: (206) 224-2880

PROJECT NO.: 05052
DRAWN BY: JGC/RRJ
ISSUE DATE: 06-22-07
SHEET REV.: 11-20-09

S. 352ND ST
ROAD PLAN
AND PROFILE
STA. 2+40.00
TO STA. 6+60.00
SUBCOLLECTOR

05052RD11-R15.DWG
R15