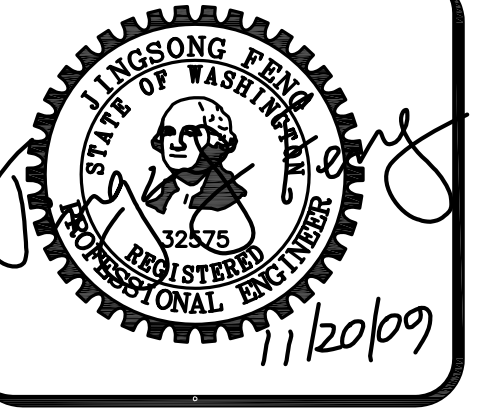
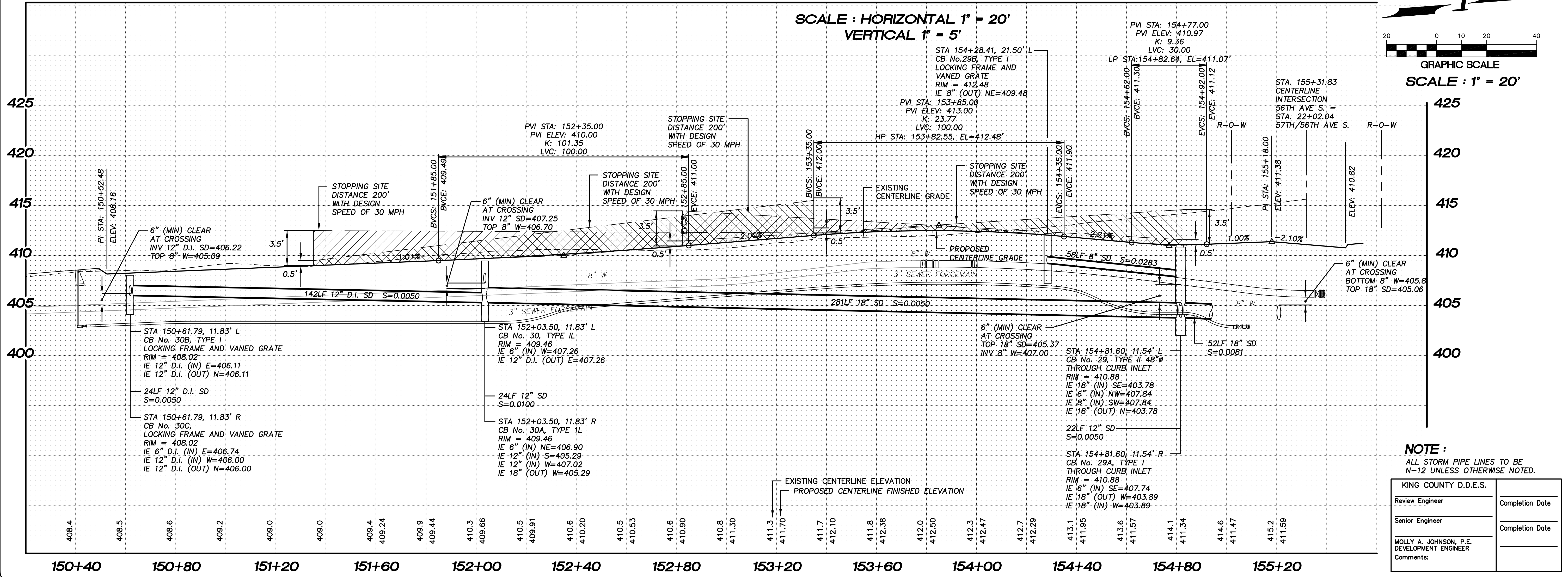
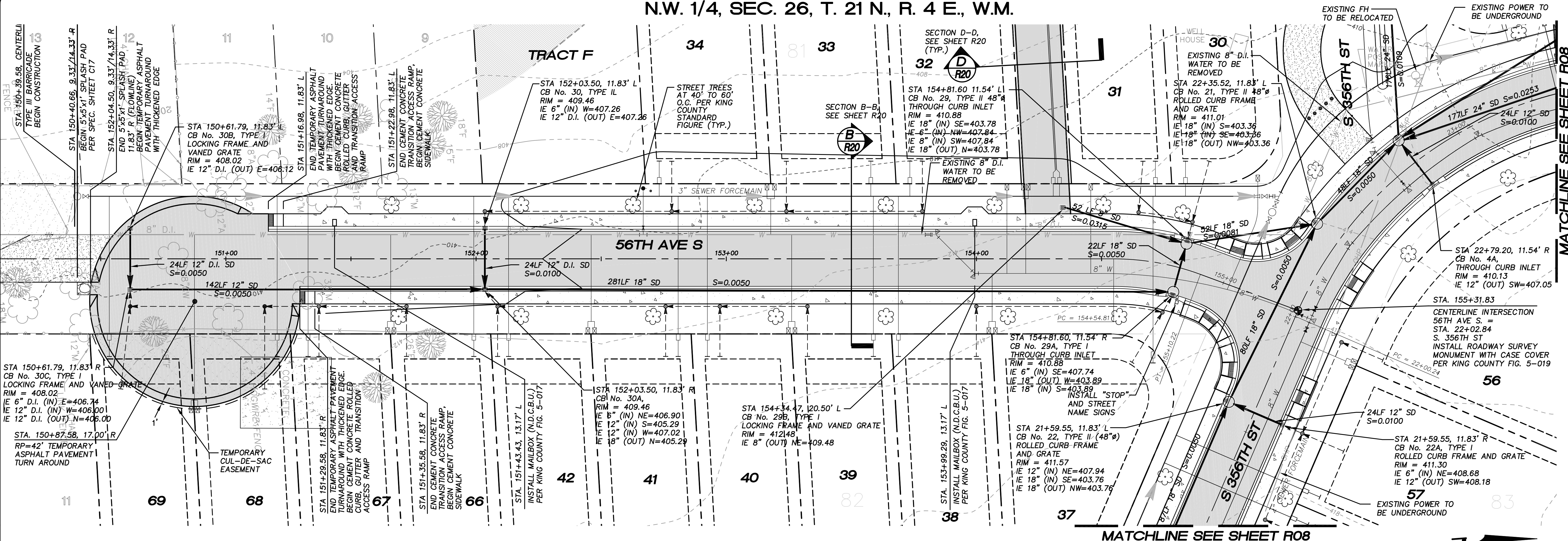


N.W. 1/4, SEC. 26, T. 21 N., R. 4 E., W.M.



15445 53RD AVE S.
SEATTLE, WA 98188
PHONE: (206) 431-7970
FAX: (206) 388-1648
WEB SITE: PACENG.COM

Pacific Engineering Design, LLC
Civil Engineering and Planning Consultants

PEPPER HILL ESTATES
KING COUNTY, WA.

FOR:
PACIFIC HOUSING GROUP I, LLC
SEATTLE, WA 98107-1346
PHONE: (206) 521-5979 FAX: (206) 224-2880

PROJECT NO: **05052**
DRAWN BY: **JGC/RRJ**
ISSUE DATE: **06-22-07**
SHEET REV: **11-20-09**

56TH AVE S. ROAD PLAN AND PROFILE STA. 151+60.00 TO STA. 155+20.00±
SUBACCESS

05052R008-R13.DWG
R13