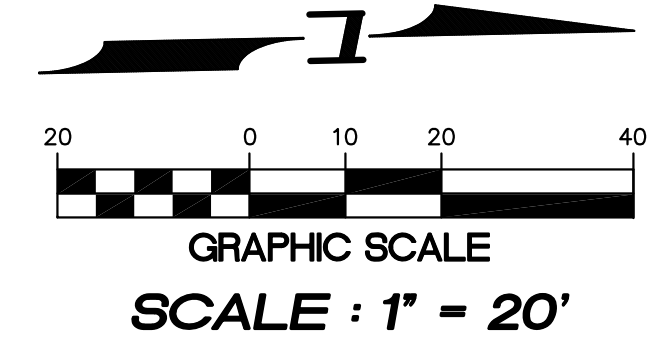
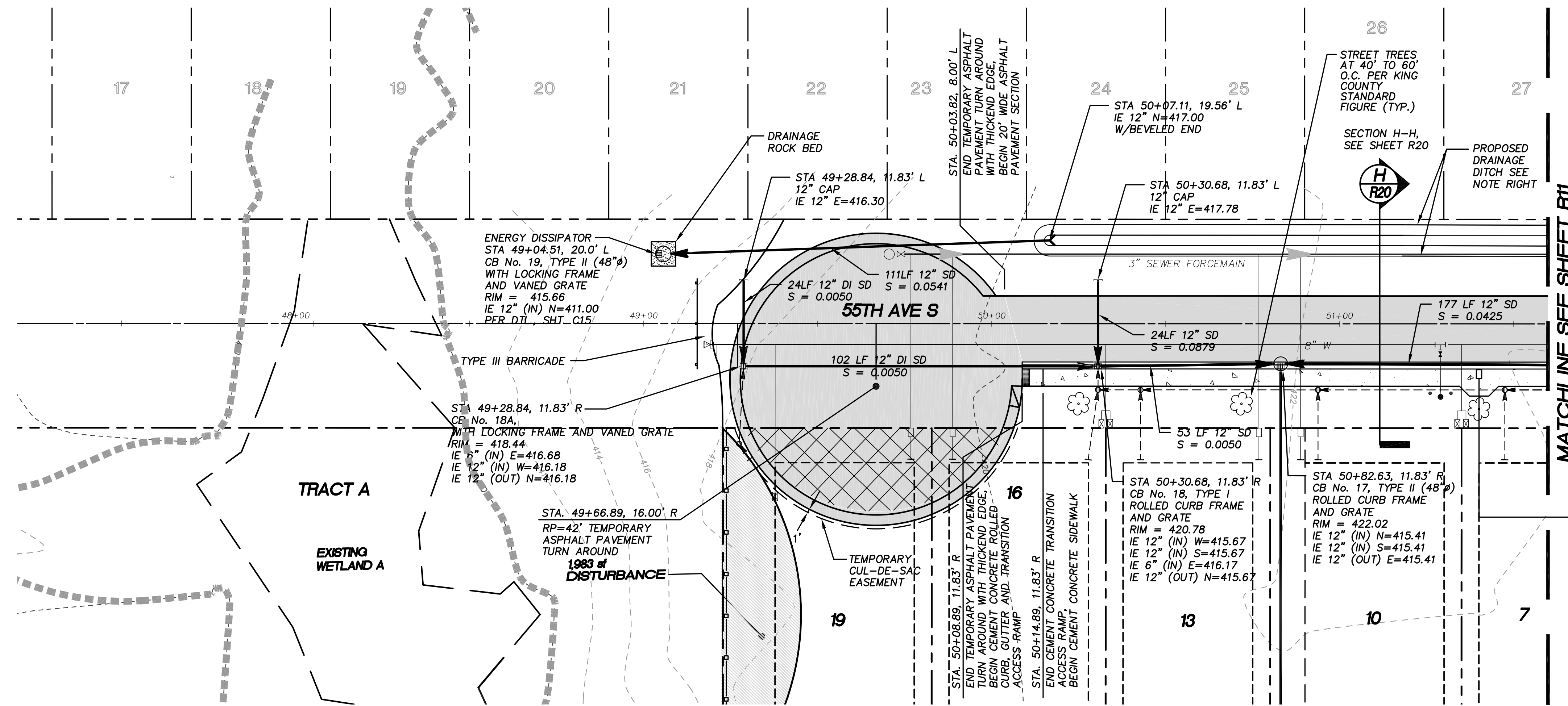
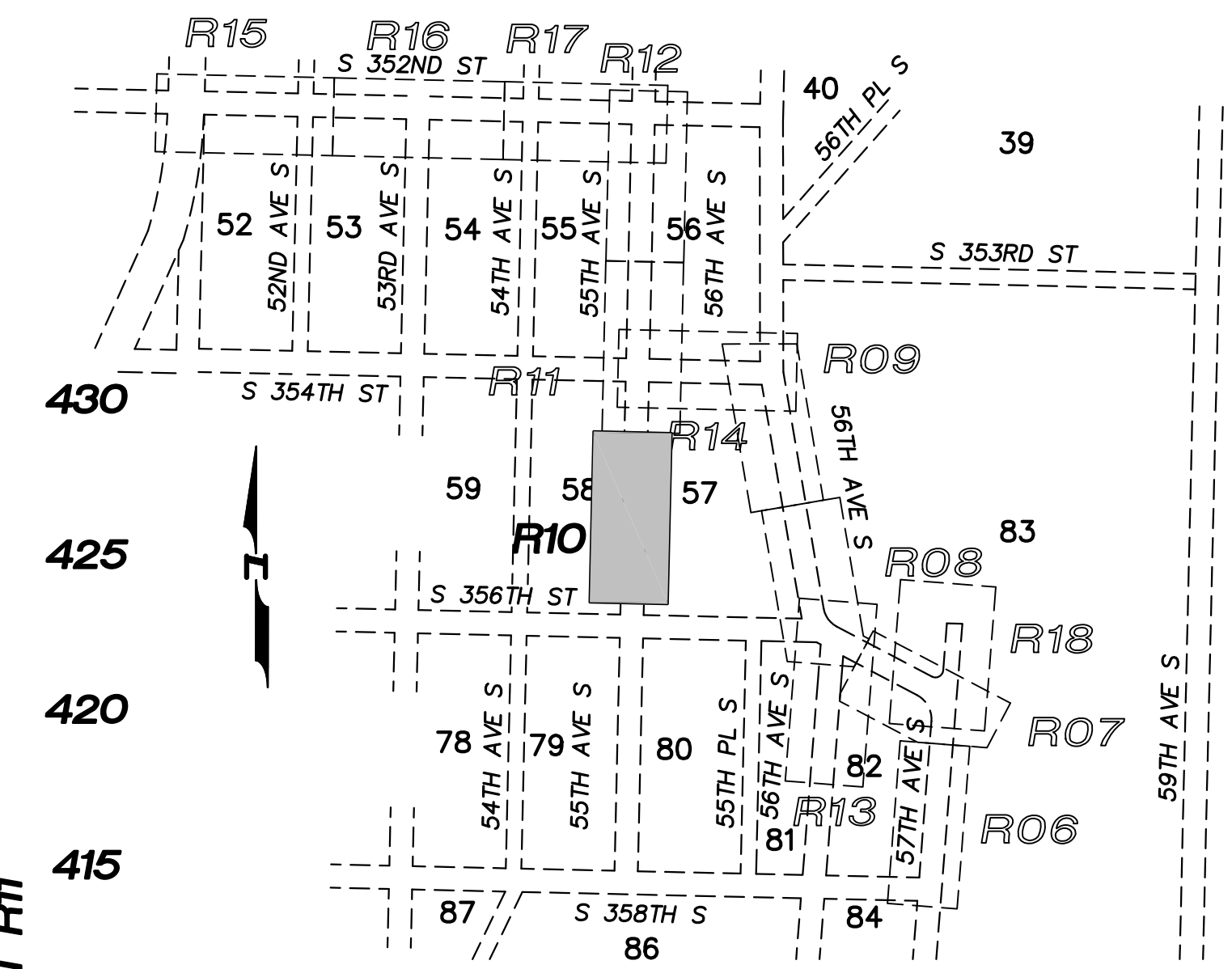
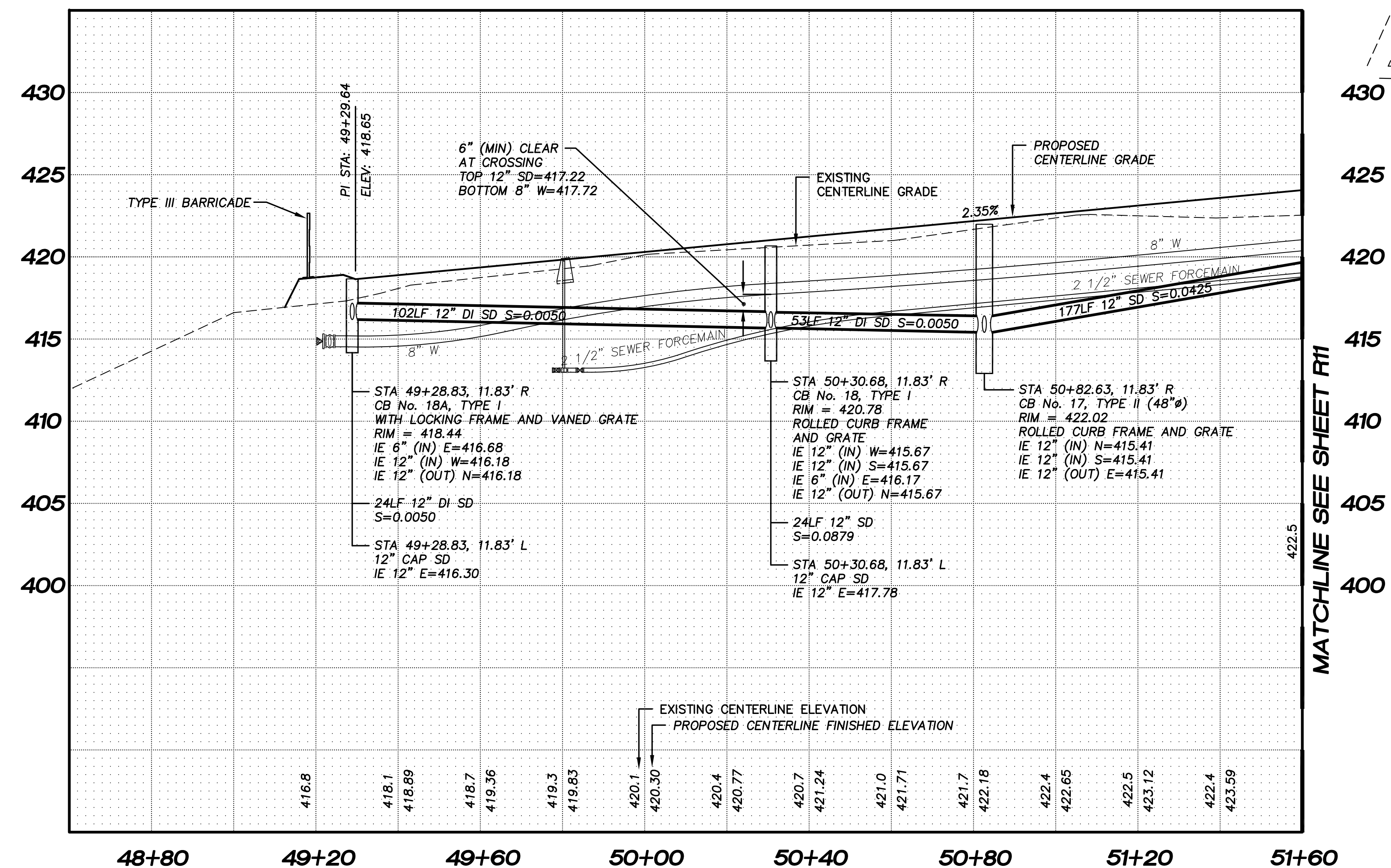


N.W. 1/4, SEC. 26, T. 21 N., R. 4 E., W.M.



PROPOSED GRASS SEED MIXTURE
 GRASS SEED MIXTURE BY WEIGHT MAY BE 10 PERCENT COLONIAL BENTGRASS, 40 PERCENT TALL OR RED FESCUE, 10 PERCENT WHITE CLOVER, HYDROSEED AT 120 LBS./ACRE, HANDSEED AT 3 LBS./1,000 SQUARE FEET. WHERE THERE IS HIGH GROUNDWATER, THE FOLLOWING SPECIES MAY BE SUBSTITUTED OR ADDED: MEADOW OR PACIFIC FOXTAIL, TIMOTHY, OR REDTOP.

SCALES : HORIZONTAL 1" = 20'
 VERTICAL 1" = 5'



KEY MAP
 SCALE : 1" = 400'

NOTE :
 ALL STORM PIPE LINES TO BE N-12 UNLESS OTHERWISE NOTED.

KING COUNTY D.D.E.S.	
Review Engineer	Completion Date
Senior Engineer	Completion Date
MOLLY A. JOHNSON, P.E. DEVELOPMENT ENGINEER Comments:	



15445 53RD AVE. S.
 SEATTLE, WA 98188
 PHONE: (206) 431-7970
 FAX: (206) 388-1648
 WEB SITE: PACENG.COM

Pacific Engineering Design, LLC
 Civil Engineering and Planning Consultants

PEPPER HILL ESTATES
 KING COUNTY, WA.

FOR:
 PACIFIC HOUSING GROUP I, LLC
 SEATTLE, WA 98107-1346
 PHONE: (206) 521-5979 FAX: (206) 224-2880

PROJECT NO.: 05052
 DRAWN BY: JGC/RRJ
 ISSUE DATE: 06-22-07
 SHEET REV.: 11-20-09

55TH AVE S. ROAD PLAN AND PROFILE
 STA. 48+80.00 TO STA. 51+60.00
 SUBACCESS

05052R006-R10.DWG
R10