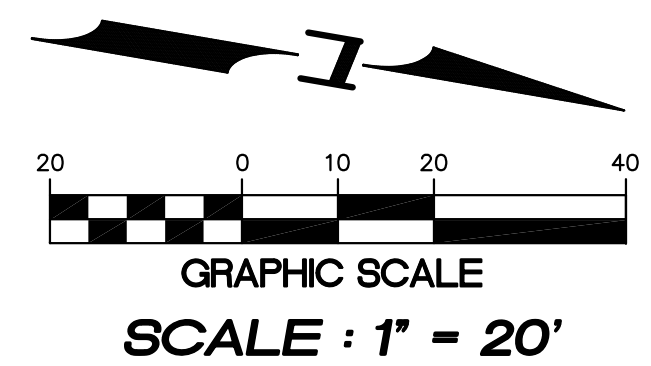


N.W. 1/4, SEC. 26, T. 21 N., R. 4 E., W.M.



15445 53RD AVE. S.
SEATTLE, WA 98188
PHONE: (206) 431-7970
FAX: (206) 388-1648
WEB SITE:
PACENG.COM

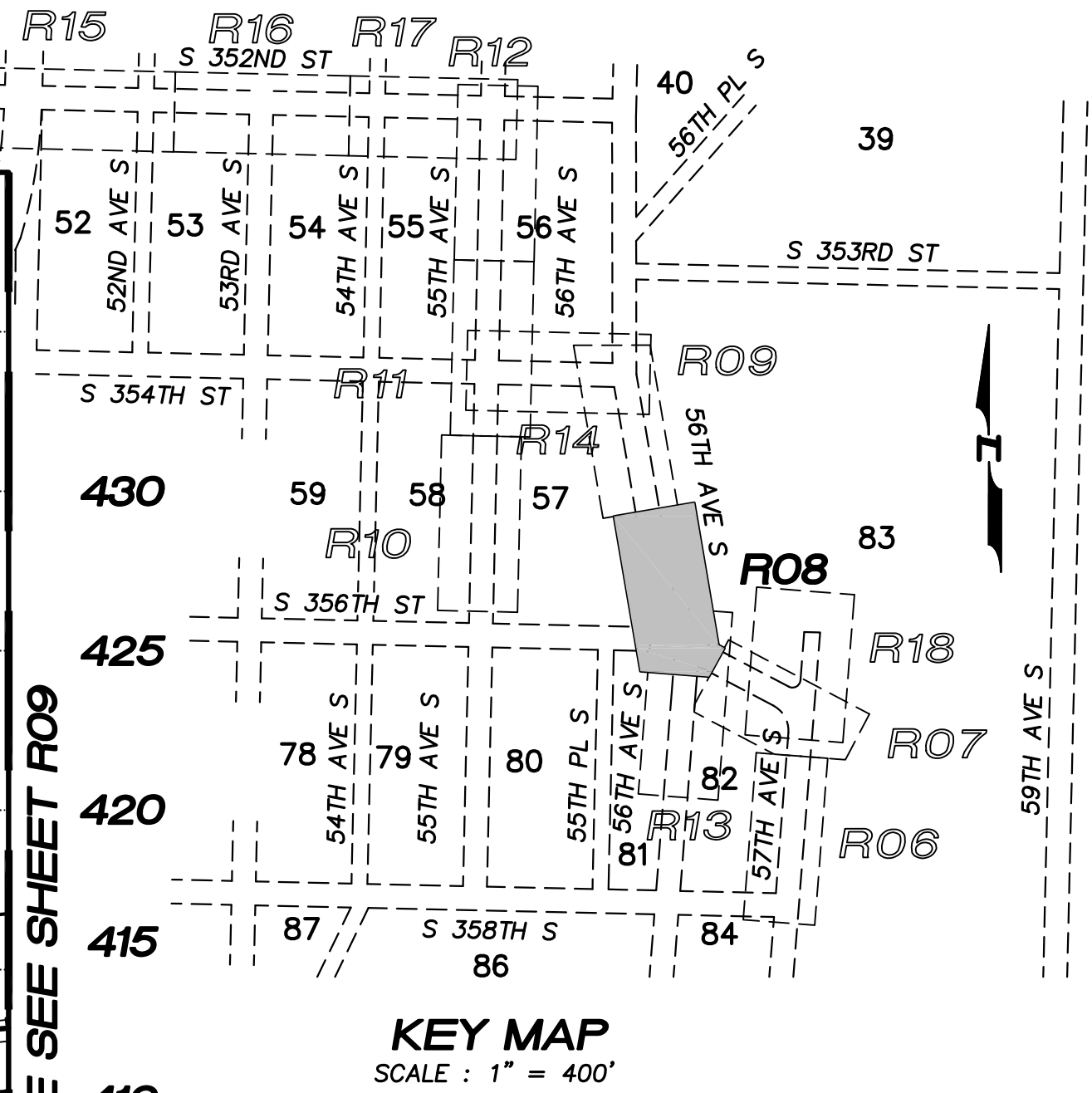
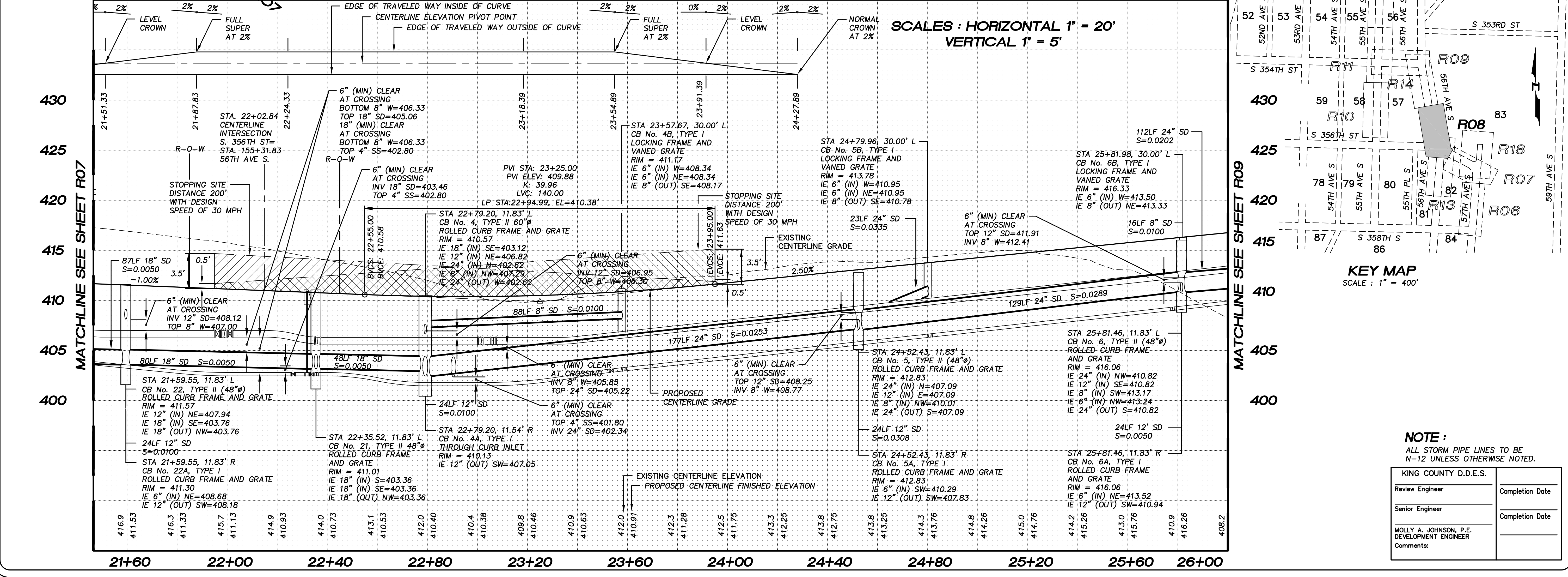
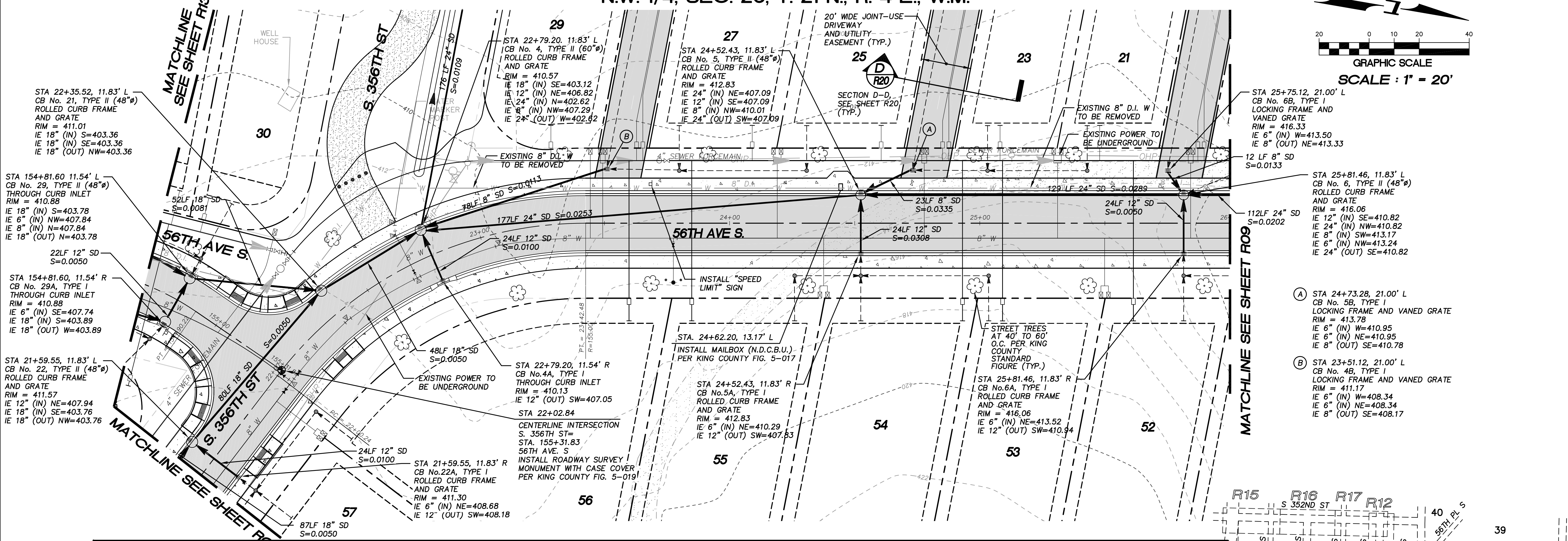
Pacific
Engineering
Design, LLC
Civil Engineering and
Planning Consultants

PEPPER HILL ESTATES
KING COUNTY, WA.
FOR:
PACIFIC HOUSING GROUP I, LLC
SEATTLE, WA 98107-1346
PHONE: (206) 521-5979 FAX: (206) 224-2880

PROJECT NO: 05052
DRAWN BY: JGC/RRJ
ISSUE DATE: 05-04-07
SHEET REV: 11-20-09

S. 356TH ST/
56TH AVE S. ROAD
PLAN AND PROFILE
STA. 21+50.00
TO STA. 26+00.00
SUBACCESS

05052R03--R08.DWG
R08



NOTE: ALL STORM PIPE LINES TO BE N-12 UNLESS OTHERWISE NOTED.

KING COUNTY D.D.E.S.	
Review Engineer	Completion Date
Senior Engineer	Completion Date
MOLLY A. JOHNSON, P.E. DEVELOPMENT ENGINEER	
Comments:	