

S. 362ND ST

N.W. 1/4, SEC. 26, T. 21 N., R. 4 E., W.M.

LAKEHAVEN UTILITY DISTRICT

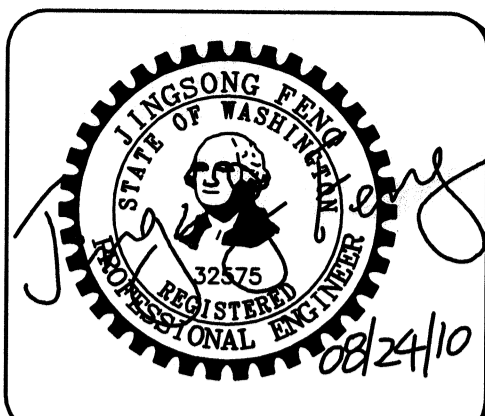
Water Plan 8/24/10 Sewer Plan

APPROVED FOR CONSTRUCTION  
SUBJECT TO CHANGES NOTED

The District's review is not a check of any dimension or quantity and will not relieve the Developer from responsibility for errors of any sort. No changes shall be made in the plans except by the consent of the District.

General Manager/District Engineer \_\_\_\_\_ Date \_\_\_\_\_

This construction plan will expire one year from plan approval date, if construction has not commenced.



15445 53RD AVE. S.  
SEATTLE, WA 98188  
PHONE: (206) 431-7970  
FAX: (206) 388-1648  
WEB SITE: PACENG.COM

Pacific Engineering Design, LLC  
Civil Engineering and Planning Consultants

LAKEHAVEN UTILITY DISTRICT PROJECT No. 6304025  
PEPPER HILL ESTATES  
KING COUNTY, WA.

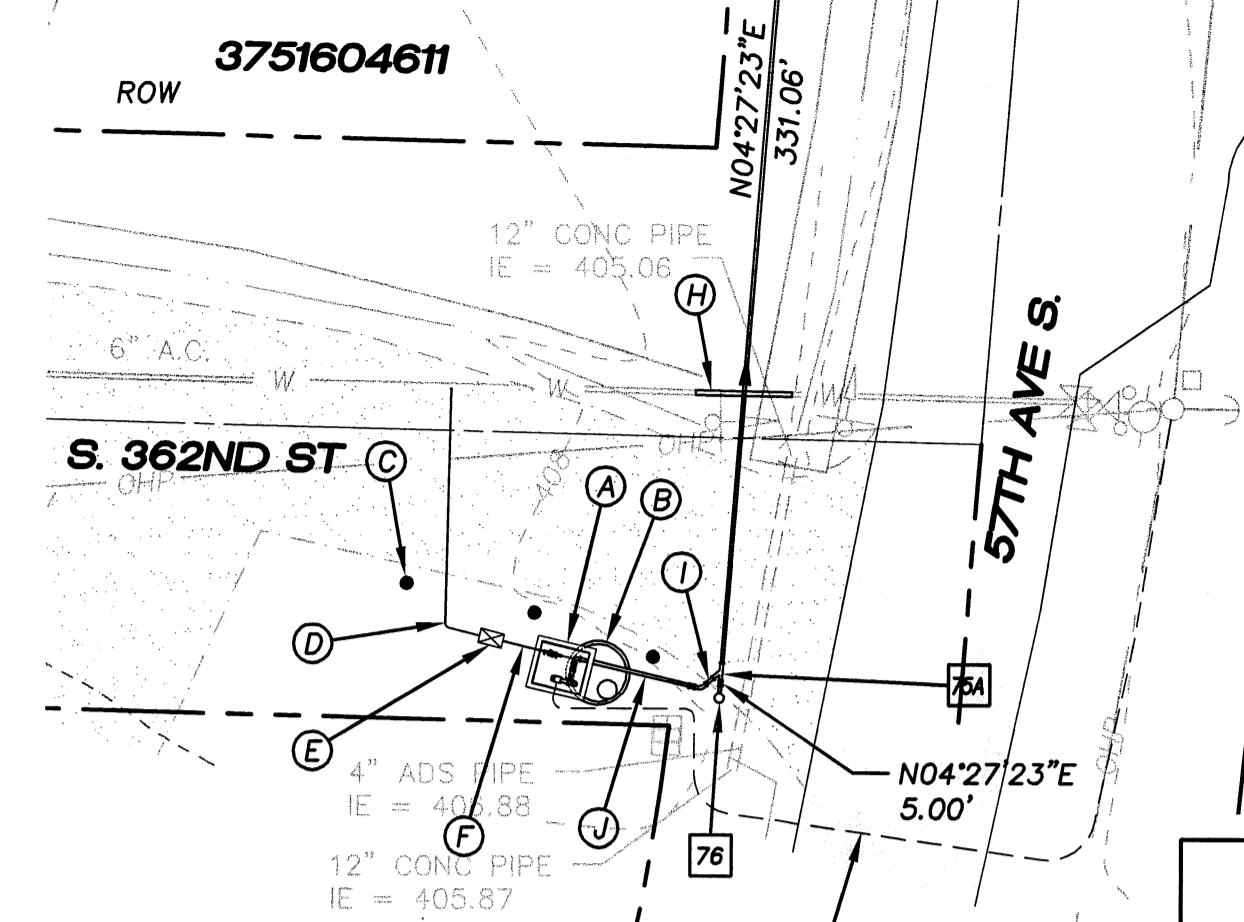
FOR: PACIFIC HOUSING GROUP I, LLC  
1420 5TH AVE, SUITE 2200  
SEATTLE, WA, 98101-0346  
PHONE: (206) 521-5979, FAX: (206) 224-2880

PROJECT NO.: 05052  
DRAWN BY: JGC  
ISSUE DATE: 09-30-05  
SHEET REV.: 08-24-10

FORCE MAIN SANITARY SEWER PUMP STATION DETAILS

05052SS23-SS23.DWG  
**SS23**

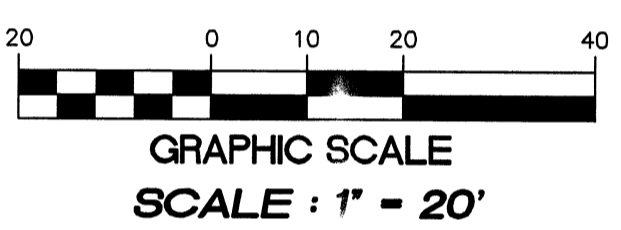
- (A) HOTBOX SEE DETAIL RIGHT HEREON
- (B) FLUSHING PUMP STATION IN 72" MANHOLE SEE DETAIL RIGHT HEREON
- (C) GUARD POST (3 REQUIRED)
- (D) 30LF 3/4" WATER
- (E) 3/4" WATER METER
- (F) 6LF 3/4" WATER
- (G) ROUTE POWER SUPPLY TO PUMP STATION (UNDER GROUND WIRING)
- (H) INSTALL 20LF D.I. CL 50 WATER MAIN TO REPLACE EXISTING 6" AC WATER MAIN
- (I) 5LF 4" HDPE DR11
- (J) 13LF 4" HDPE DR11



3751604653  
PUMP STATION #2 PLAN

75A 0+76.08, 25.00' L  
1-4" HDPE DR 11 WYE  
1-4" HDPE DR 11 SPOOL  
1-4" ISOLATION GATE VALVE W/BOX  
PER LAKEHAVEN STANDARD PLANS PSS-03, PSS-05 AND PSS-06, SEE SHEET SS20

76 0+71.08, 25.00' L  
1-4" CLEANOUT W/PIG PORT #28 LAUNCH AT END OF PIPE RUN  
2-4" HDPE DR 11 SPOOLS  
1-4" ISOLATION GATE VALVE W/BOX  
PER LAKEHAVEN STANDARD PLANS PSS-01, PSS-03, PSS-05 AND PSS-06, SEE SHEET SS20  
RIM=407.8±  
INV=402.0±



300 SERIES REF  
FLEX-COUPLED END SUCTION PUMP ONLY

PUMP SIZE	DISCH SUCT	CASE	HILL DIMENSIONS ARE IN INCHES AND 0.375"	NOT FOR CONSTRUCTION, UNLESS CERTIFIED BY ENGINEER.																	
				A	B	CP	D	E1	E2	F	G	H	I	J	K1	N & V	U	X	Y	Z	
1 1/2	2	5	8.250	10.500	14.188	4.500	2.750	3.938	6.313	6.625	0.563	0.563	2.000	3.938	1.938	0.875	0.250	1.000	1.438	5.500	3.125
2	1 1/2	5	9.438	10.500	14.188	4.500	2.750	3.938	6.313	6.625	0.563	0.563	2.000	3.938	1.938	0.875	0.250	1.000	1.438	5.500	3.125
2 1/2	2	5	11.000	10.500	14.188	4.500	2.750	3.938	6.313	6.625	0.563	0.563	2.000	3.938	1.938	0.875	0.250	1.000	1.438	5.500	3.125
1 1/4	1 1/2	8	9.438	10.500	14.188	4.500	2.750	3.938	6.313	6.625	0.563	0.563	2.000	3.938	1.938	0.875	0.250	1.000	1.438	5.500	3.125
1 1/2	1 1/2	7	9.438	10.500	14.188	4.500	2.750	3.938	6.313	6.625	0.563	0.563	2.000	3.938	1.938	0.875	0.250	1.000	1.438	5.500	3.125
2 1/2	2 1/2	7	10.438	10.500	14.250	4.500	2.750	3.938	6.313	6.625	0.563	0.563	2.000	3.938	1.938	0.875	0.250	1.000	1.438	5.500	3.125
2 1/2	3	7	11.000	10.500	14.438	4.500	2.750	3.938	6.313	6.625	0.563	0.563	2.000	3.938	1.938	0.875	0.250	1.000	1.438	5.500	3.125
3	4	7	12.625	10.500	14.500	4.500	2.750	3.938	6.313	6.625	0.563	0.563	2.000	3.938	1.938	0.875	0.250	1.000	1.438	5.500	3.125
4	5	7	12.625	10.500	14.500	4.500	2.750	3.938	6.313	6.625	0.563	0.563	2.000	3.938	1.938	0.875	0.250	1.000	1.438	5.500	3.125
1 1/4	2	8	9.438	10.500	14.125	4.500	2.750	3.938	6.313	6.625	0.563	0.563	2.000	3.938	1.938	0.875	0.250	1.000	1.438	5.500	3.125
1 1/2	1 1/2	8	10.438	10.500	14.125	4.500	2.750	3.938	6.313	6.625	0.563	0.563	2.000	3.938	1.938	0.875	0.250	1.000	1.438	5.500	3.125
2 1/2	2 1/2	8	10.438	10.500	14.188	4.500	2.750	3.938	6.313	6.625	0.563	0.563	2.000	3.938	1.938	0.875	0.250	1.000	1.438	5.500	3.125
2 1/2	3	8	12.625	10.500	14.250	4.500	2.750	3.938	6.313	6.625	0.563	0.563	2.000	3.938	1.938	0.875	0.250	1.000	1.438	5.500	3.125
3	4	8	13.625	11.500	15.625	4.750	3.000	4.000	6.500	6.875	0.563	0.563	2.000	4.000	2.000	0.875	0.250	1.000	1.438	5.500	3.125
4	5	8	14.188	13.500	15.625	4.750	3.000	4.000	6.500	6.875	0.563	0.563	2.000	4.000	2.000	0.875	0.250	1.000	1.438	5.500	3.125
5	6	8	15.750	13.500	15.625	4.750	3.000	4.000	6.500	6.875	0.563	0.563	2.000	4.000	2.000	0.875	0.250	1.000	1.438	5.500	3.125
8	8	8	21.875	14.500	19.000	5.000	3.250	4.250	7.000	7.375	0.563	0.563	2.000	4.250	2.000	0.875	0.250	1.000	1.438	5.500	3.125
1 1/4	2	10	12.625	10.500	14.125	4.500	2.750	3.938	6.313	6.625	0.563	0.563	2.000	3.938	1.938	0.875	0.250	1.000	1.438	5.500	3.125
1 1/2	1 1/2	10	12.625	10.500	14.188	4.500	2.750	3.938	6.313	6.625	0.563	0.563	2.000	3.938	1.938	0.875	0.250	1.000	1.438	5.500	3.125
2 1/2	2 1/2	10	12.625	10.500	14.250	4.500	2.750	3.938	6.313	6.625	0.563	0.563	2.000	3.938	1.938	0.875	0.250	1.000	1.438	5.500	3.125
2 1/2	3	10	14.188	10.500	14.500	4.500	2.750	3.938	6.313	6.625	0.563	0.563	2.000	3.938	1.938	0.875	0.250	1.000	1.438	5.500	3.125
3	4	10	15.750	13.500	15.625	4.750	3.000	4.000	6.500	6.875	0.563	0.563	2.000	4.000	2.000	0.875	0.250	1.000	1.438	5.500	3.125
4	5	10	15.750	13.500	15.625	4.750	3.000	4.000	6.500	6.875	0.563	0.563	2.000	4.000	2.000	0.875	0.250	1.000	1.438	5.500	3.125
5	6	10	17.750	14.500	19.000	5.000	3.250	4.250	7.000	7.375	0.563	0.563	2.000	4.250	2.000	0.875	0.250	1.000	1.438	5.500	3.125
8	8	10	21.875	15.313	19.438	5.000	3.250	4.250	7.000	7.375	0.563	0.563	2.000	4.250	2.000	0.875	0.250	1.000	1.438	5.500	3.125
1 1/2	1 1/2	13	13.625	11.000	15.625	4.750	3.000	4.000	6.500	6.875	0.563	0.563	2.000	4.000	2.000	0.875	0.250	1.000	1.438	5.500	3.125
2 1/2	2 1/2	13	13.625	11.000	15.625	4.750	3.000	4.000	6.500	6.875	0.563	0.563	2.000	4.000	2.000	0.875	0.250	1.000	1.438	5.500	3.125
2 1/2	3	13	15.250	13.500	15.625	4.750	3.000	4.000	6.500	6.875	0.563	0.563	2.000	4.000	2.000	0.875	0.250	1.000	1.438	5.500	3.125
3	4	13	15.750	13.500	15.625	4.750	3.000	4.000	6.500	6.875	0.563	0.563	2.000	4.000	2.000	0.875	0.250	1.000	1.438	5.500	3.125
4	5	13	15.750	13.500	15.625	4.750	3.000	4.000	6.500	6.875	0.563	0.563	2.000	4.000	2.000	0.875	0.250	1.000	1.438	5.500	3.125
5	6	13	19.688	14.500	19.625	5.000	3.250	4.250	7.000	7.375	0.563	0.563	2.000	4.250	2.000	0.875	0.250	1.000	1.438	5.500	3.125
6	8	13	21.875	15.313	19.625	5.000	3.250	4.250	7.000	7.375	0.563	0.563	2.000	4.250	2.000	0.875	0.250	1.000	1.438	5.500	3.125
8	10	13	21.875	15.313	19.625	5.000	3.250	4.250	7.000	7.375	0.563	0.563	2.000	4.250	2.000	0.875	0.250	1.000	1.438	5.500	3.125
3	4	16	17.313	14.500	18.888	5.000	3.250	4.250	7.000	7.375	0.563	0.563	2.000	4.250	2.000	0.875	0.250	1.000	1.438	5.500	3.125
4	5	16	19.688	14.500	18.888	5.000	3.250	4.250	7.000	7.375	0.563	0.563	2.000	4.250	2.000	0.875	0.250	1.000	1.438	5.500	3.125
5	6	16	19.688	14.500	18.888	5.000	3.250	4.250	7.000	7.375	0.563	0.563	2.000	4.250	2.000	0.875	0.250	1.000	1.438	5.500	3.125
6	8	16	21.875	15.313	19.625	5.000	3.250	4.250	7.000	7.375	0.563	0.563	2.000	4.250	2.000	0.875	0.250	1.000	1.438	5.500	3.125
8	10	16	21.875	15.313	19.625	5.000	3.250	4.250	7.000	7.375	0.563	0.563	2.000	4.250	2.000	0.875	0.250	1.000	1.438	5.500	3.125
10	12	16	25.625	21.000	26.875	5.500	3.500	4.500	7.500	7.875	0.563	0.563	2.000	4.500	2.000	0.875	0.250	1.000	1.438	5.500	3.125
12	14	16	31.500	21.000	26.875	5.500	3.500	4.500	7.500	7.875	0.563	0.563	2.000	4.500	2.000	0.875	0.250	1.000	1.438	5.500	3.125
5	6	20	24.375	19.625	26.875	5.000	3.250	4.250	7.000	7.375	0.563	0.563	2.000	4.250	2.000	0.875	0.250	1.000	1.438	5.500	3.125
6	8	20	21.875	15.313	19.625	5.000	3.250	4.250	7.000	7.375	0.563	0.563	2.000	4.250	2.000	0.875	0.250	1.000	1.438	5.500	3.125
8	10	20	28.375	21.000	26.875	5.500	3.500	4.500	7.500	7.875	0.563	0.563	2.000	4.500	2.000	0.875	0.250	1.000	1.438	5.500	3.125
10	1																				