

59 1- CLEANOUT W/PIG PORT #31

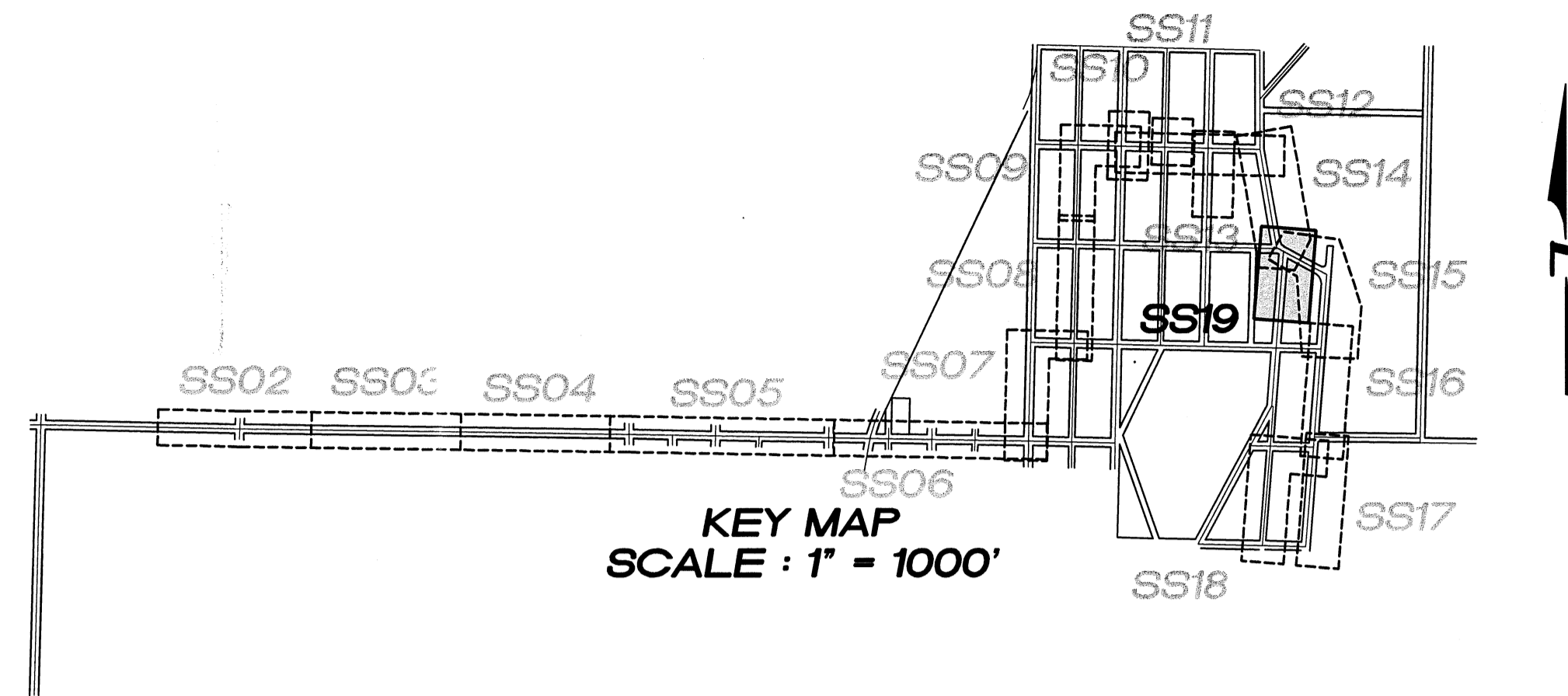
47 SEE SHEET SS14

VERTICAL DATUM :

NAVD 88

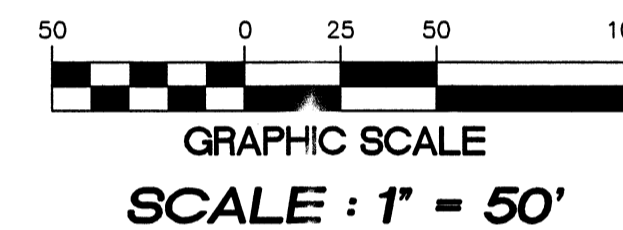
BENCH MARK :

KING COUNTY SURVEY CONTROL POINT No. 6905.
SW CORNER OF SECTION 27, T. 24 N., R. 4 E., W.M.,
CONCRETE MONUMENT WITH LEAD AND BRASS TACK,
SET 1.2 FEET BELOW GRADE, IN STANDARD KC MON. CASE.
ELEVATION = 367.06



**ALL STUBS 1/4" HDPE DR 11
SANITARY SIDE SEWER STUB**

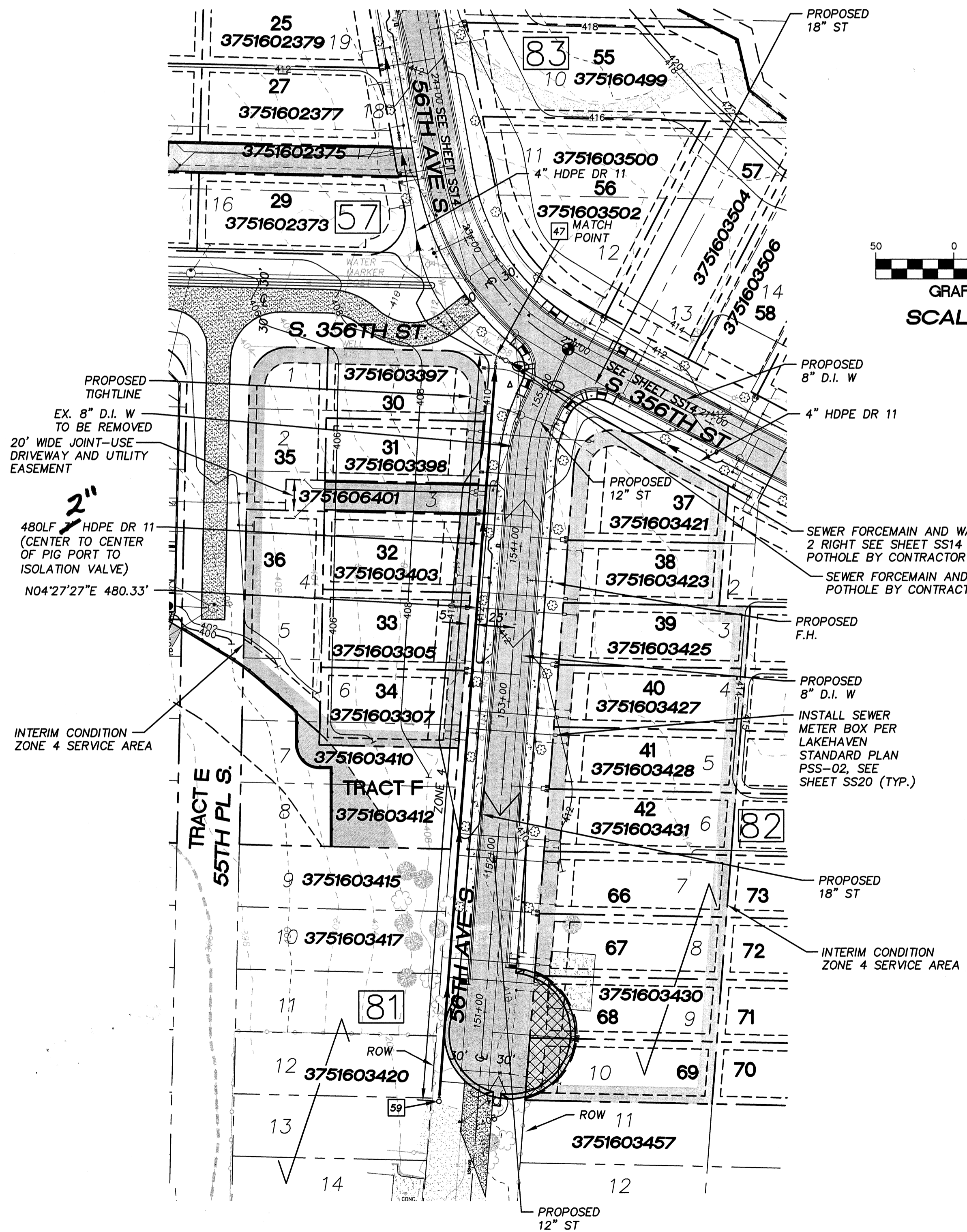
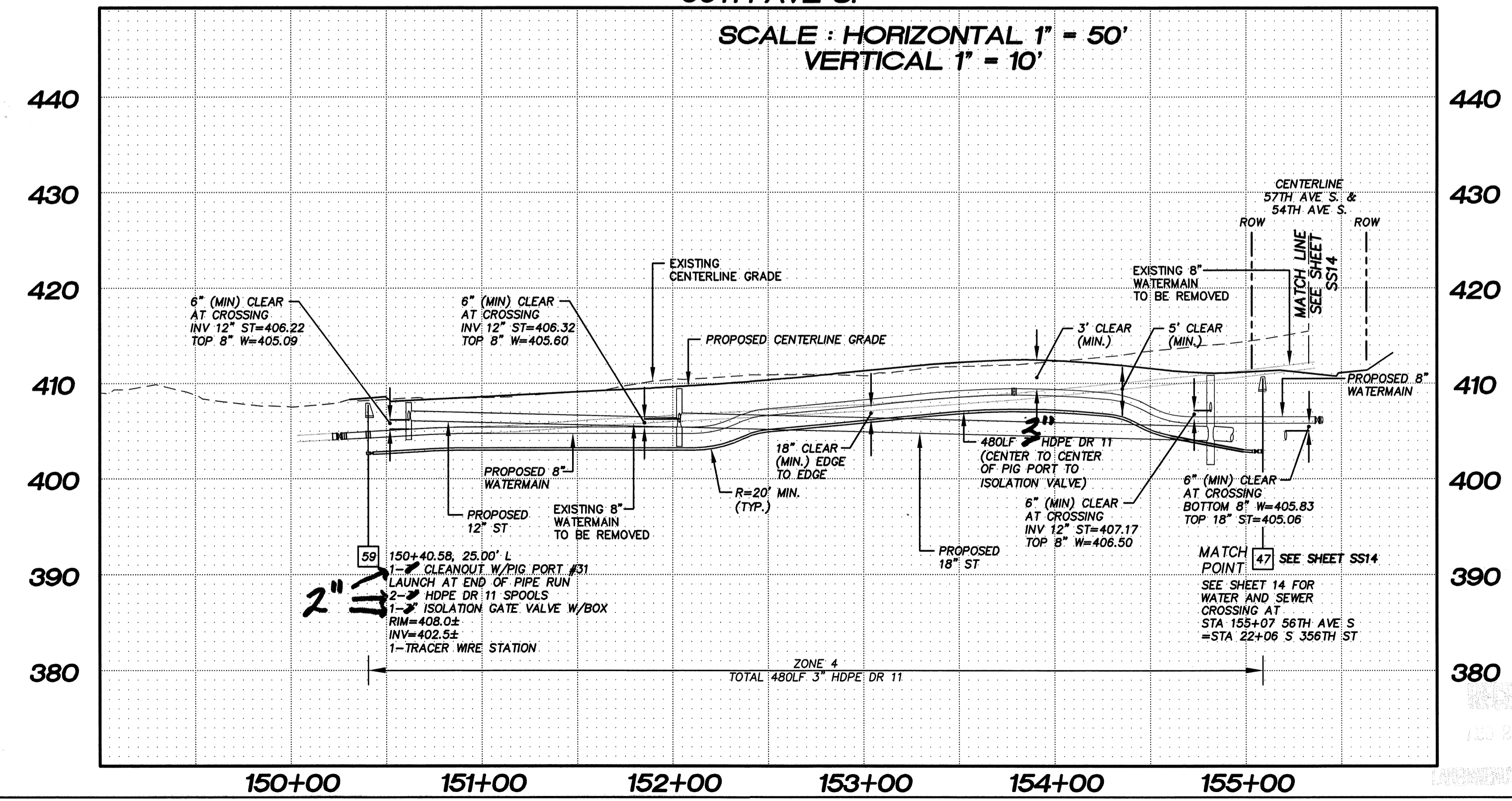
BLOCK No.	LOT No.	PAD ELEV.	STA.	SIZE	LENGTH	DEPTH AT P.L.	INV. AT P.L.
81	30	407.0	0+33	1/4" HDPE DR 11	5LF	3' (TYP.)	404.3
81	31	407.0	0+45	1/4" HDPE DR 11	5LF	3' (TYP.)	404.3
82	37	412.5	0+46	1/4" HDPE DR 11	61LF	3' (TYP.)	409.8
81	35	405.0	0+84	1/4" HDPE DR 11	5LF	3' (TYP.)	402.3
81	36	405.0	0+86	1/4" HDPE DR 11	5LF	3' (TYP.)	402.3
81	32	407.0	1+44	1/4" HDPE DR 11	5LF	3' (TYP.)	404.3
82	38	413.0	1+48	1/4" HDPE DR 11	55LF	3' (TYP.)	410.3
82	39	413.0	1+58	1/4" HDPE DR 11	55LF	3' (TYP.)	410.3
81	33	407.0	1+59	1/4" HDPE DR 11	5LF	3' (TYP.)	404.3
82	40	413.0	2+24	1/4" HDPE DR 11	55LF	3' (TYP.)	410.3
82	41	412.5	2+36	1/4" HDPE DR 11	55LF	3' (TYP.)	409.8
81	34	407.0	2+44	1/4" HDPE DR 11	5LF	3' (TYP.)	404.3
82	42	412.5	3+04	1/4" HDPE DR 11	55LF	3' (TYP.)	409.8
82	66	412.0	3+18	1/4" HDPE DR 11	55LF	3' (TYP.)	409.3
82	67	411.0	3+84	1/4" HDPE DR 11	55LF	3' (TYP.)	408.3
82	68	410.0	3+96	1/4" HDPE DR 11	55LF	3' (TYP.)	407.3
82	69	410.0	4+64	1/4" HDPE DR 11	55LF	3' (TYP.)	407.3



NOTES :

- THE MINIMUM SEPARATION BETWEEN (PARALLEL PIPELINES) WATER MAIN, WATER SERVICE LINE AND PRESSURE SEWER FACILITIES (MUST BE BELOW WATER MAIN OR WATER SERVICE) MUST BE MET, ARE AS FOLLOWS:
HORIZONTAL ≥ 10' MEASURED EDGE TO EDGE VERTICAL ≥ 18", MEASURED EDGE TO EDGE.
- THE MINIMUM SEPARATION BETWEEN (CROSSING PIPELINES) WATER MAIN, WATER SERVICE LINE AND PRESSURE SEWER FACILITIES (MUST BE BELOW WATER MAIN OR WATER SERVICE) MUST BE MET, ARE AS FOLLOWS:
VERTICAL ≥ 18" MEASURED EDGE TO EDGE
- IF THE EXISTING WATER IS AC PIPE, IT SHALL BE REPLACED WITH SAME SIZE DUCTILE IRON PIPE 10 FEET EACH SIDE OF SEWER CROSSING BUT NO LESS THAN 2 FEET INTO BOTH TRENCH WALLS (NO CDF CRADLE ALLOWED).
- LOCATION OF EXISTING UNDERGROUND UTILITIES WAS PROVIDED BY UTILITY LOCATE AND BY AS BUILT RECORDS. UTILITY PAINT MARKS WERE FIELD SURVEYED BY CES NW INC.
- OTHER UTILITY SEPARATION BETWEEN PRESSURE SEWER FACILITIES MUST BE MET, ARE AS FOLLOWS:
HORIZONTAL ≥ 3' MEASURED EDGE TO EDGE VERTICAL ≥ 6", MEASURED EDGE TO EDGE.
- FOR PARCELS IN PEPPER HILL ESTATES AREAS, EXISTING PARCEL NUMBERS AND LOT NUMBERS WILL BE UPDATED AFTER BOUNDARY LINE ADJUSTMENTS ARE RECORDED.
- ALL CLEANOUTS W/PIG PORTS ARE USED AS TRACER WIRE STATIONS.
- FRAMES AND COVERS FOR CLEANOUTS/PIGPORTS NOT SUBJECT TO VEHICULAR TRAFFIC SHALL BE SET 6" ABOVE FINISHED GRADE AND BE PROTECTED BY VALVE BOX PROTECTIVE PADS.

**56TH AVE S.
SCALE: HORIZONTAL 1" = 50'
VERTICAL 1" = 10'**



15445 53RD AVE. S.
SEATTLE, WA 98188
PHONE: (206) 431-7970
FAX: (206) 388-1648
WEB SITE: PACENG.COM

Pacific Engineering Design, LLC
Civil Engineering and Planning Consultants

LAKEHAVEN UTILITY DISTRICT PROJECT NO. 6304025
PEPPER HILL ESTATES
KING COUNTY, WA.
FOR: PACIFIC HOUSING GROUP I, LLC
1420 5TH AVE SUITE 2200
SEATTLE, WA 98101-9346
PHONE: (206) 521-5679 . FAX: (206) 224-2880

PROJECT NO.: 05052
DRAWN BY: JGC
ISSUE DATE: 09-30-05
SHEET REV.: 08-24-10

**FORCE MAIN
SANITARY SEWER
56TH AVE S
PLAN AND PROFILE**

05052SS19.DWG
SS19