

REVISIONS:

- 73 1-4" HDPE DR 11 WYE
1-4" HDPE DR 11 SPOOL
1-4" ISOLATION GATE VALVE W/BOX
1-4"x3" HDPE DR 11 REDUCER
- 74 1-4" FORCE MAIN CLEANOUT W/PIG PORT #27
- 75 1-4" ISOLATION GATE VALVE W/BOX
- 75A 1-4" HDPE DR 11 WYE
1-4" HDPE DR 11 SPOOL
1-4" ISOLATION GATE VALVE W/BOX
- 76 1-4" CLEANOUT W/PIG PORT #28

N.W. 1/4, SEC. 26, T. 21 N., R. 4 E., W.M.

VERTICAL DATUM :

NAVD 88

BENCH MARK :

KING COUNTY SURVEY CONTROL POINT No. 6905,
SW CORNER OF SECTION 27, T. 24 N., R. 4 E., W.M.,
CONCRETE MONUMENT WITH LEAD AND BRASS TACK,
SET 1.2 FEET BELOW GRADE, IN STANDARD KC MON. CASE.
ELEVATION = 367.06

LAKEHAVEN UTILITY DISTRICT

O Water Plan 8/24/10 Sewer Plan

Dated 8/24/10

APPROVED FOR CONSTRUCTION
SUBJECT TO CHANGES NOTED

[Signature] 9/23/10
General Manager/District Engineer Date

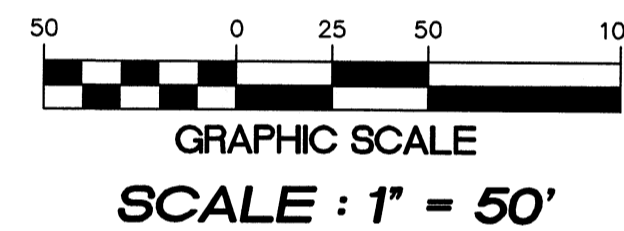
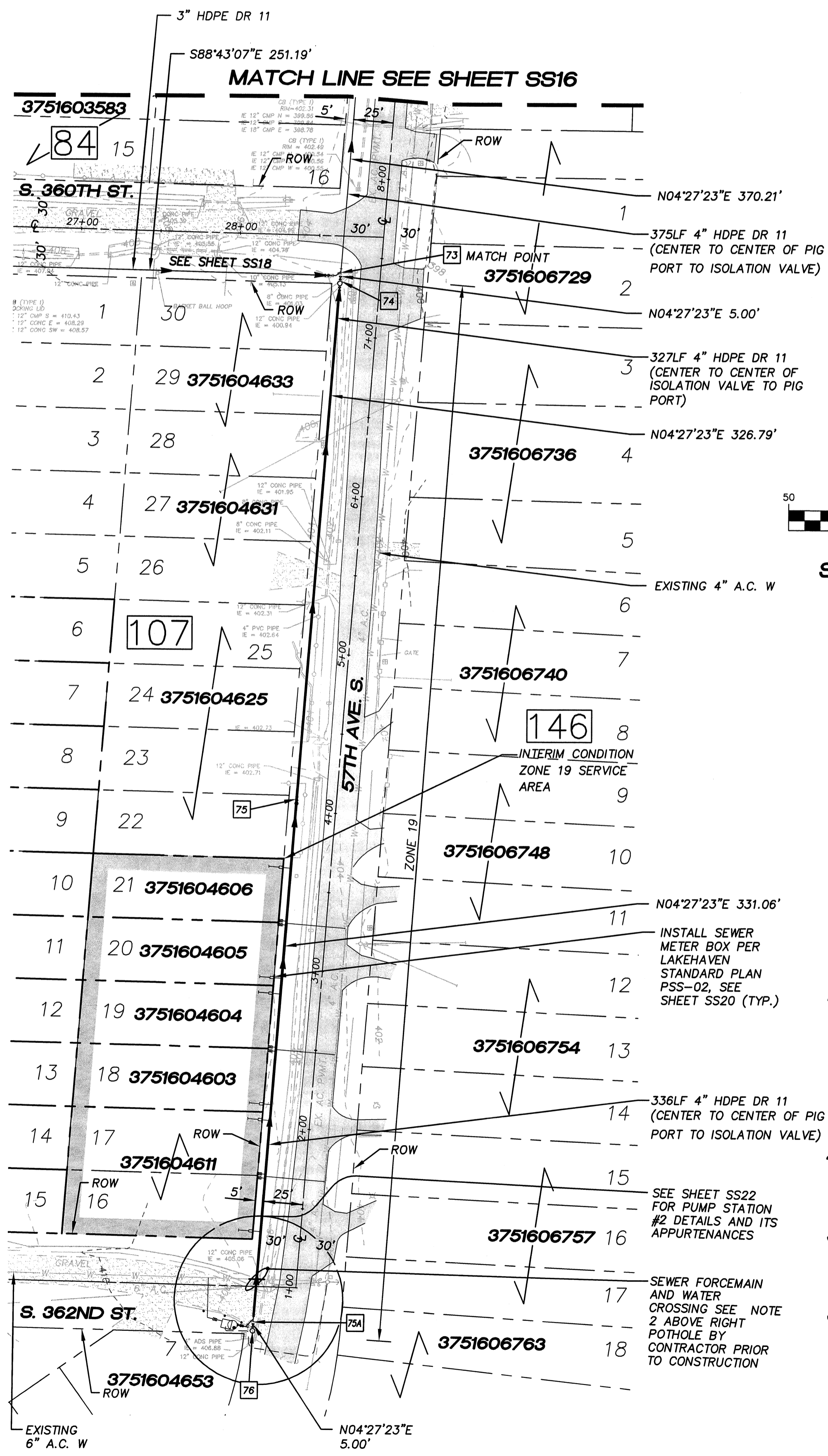
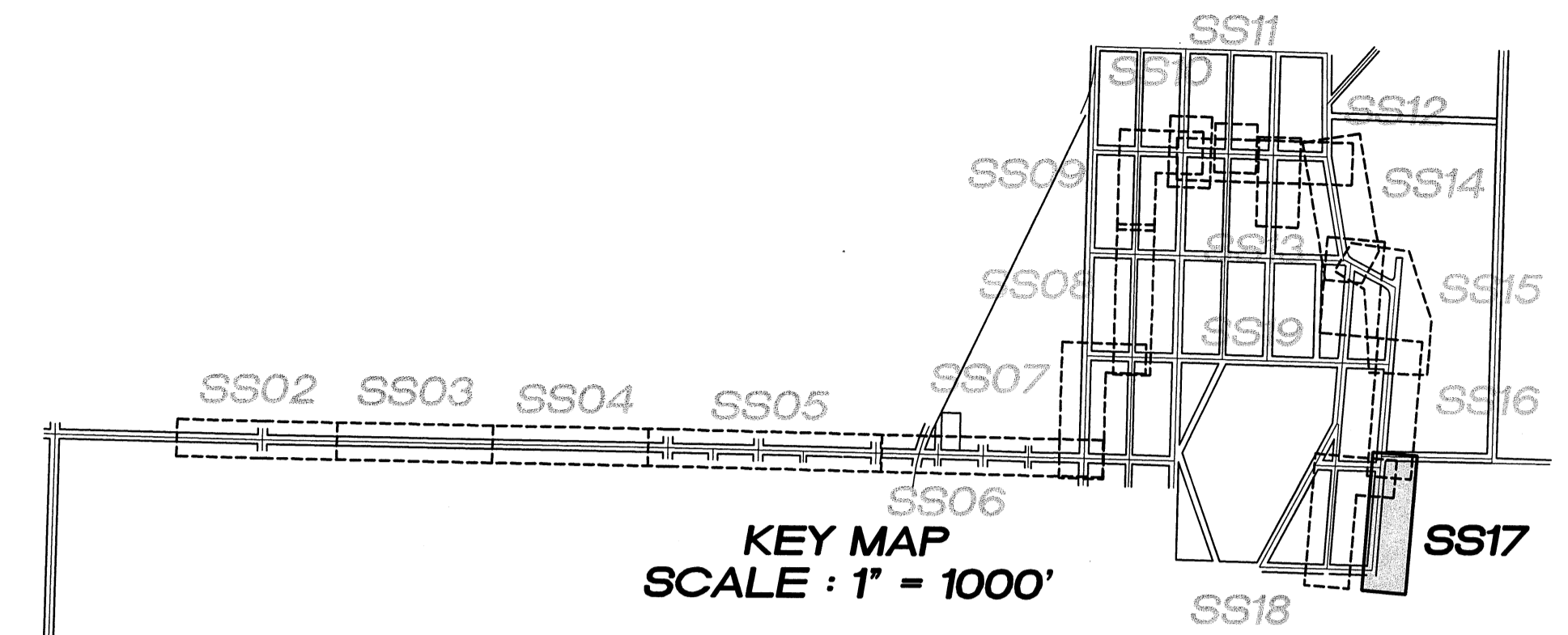
This construction plan will expire one year from plan approval date, if construction has not commenced.



15445 53RD AVE. S.
SEATTLE, WA 98188
PHONE: (206) 431-7970
FAX: (206) 388-1648
WEB SITE: PACENG.COM

Pacific Engineering Design, LLC

Civil Engineering and Planning Consultants

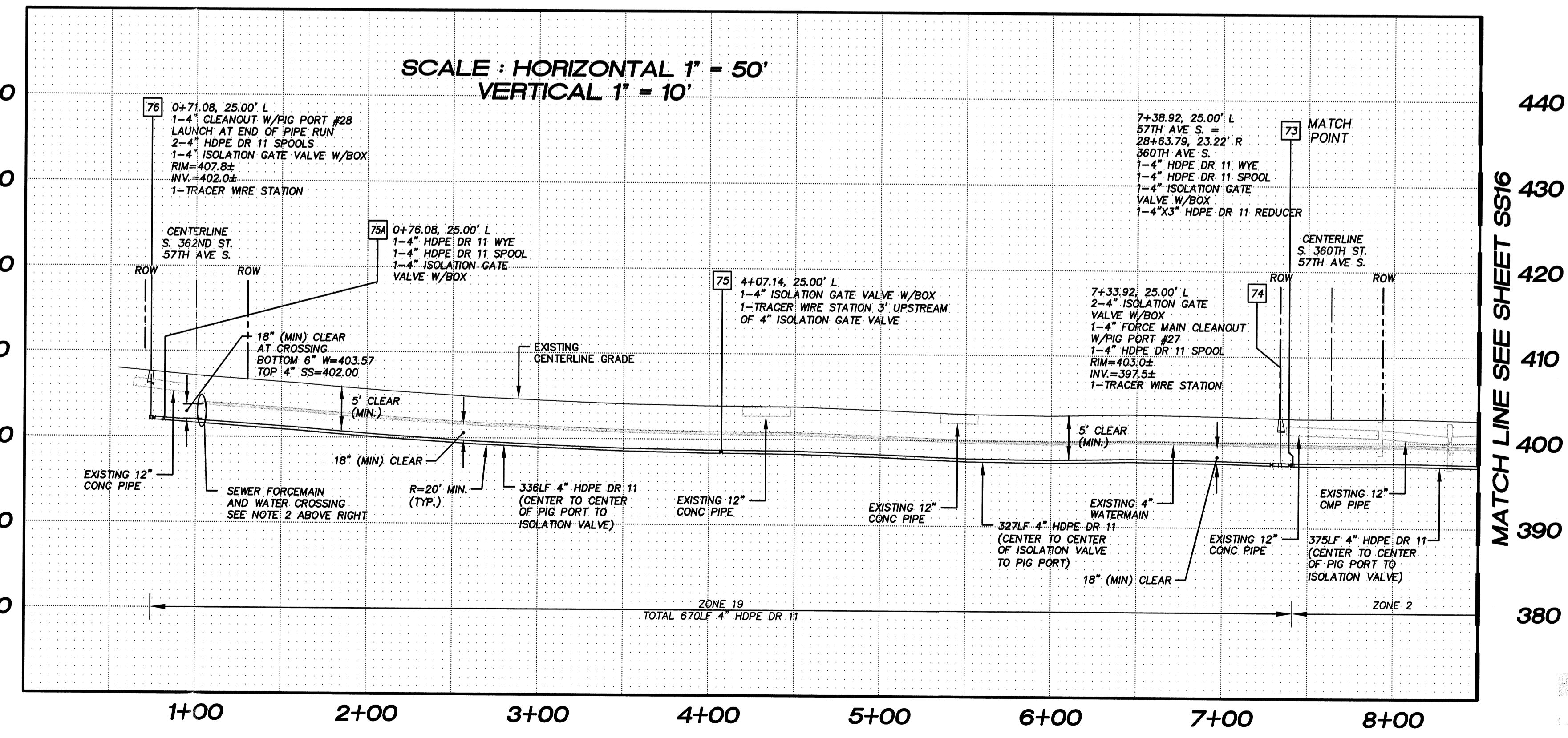


ALL STUBS 1 1/4" HDPE DR 11 SANITARY SIDE SEWER STUB

BLOCK No.	LOT No.	PAD ELEV.	STA.	SIZE	LENGTH	DEPTH AT P.L.	INV. AT P.L.
107	21	408.0	0+44	1 1/4" HDPE DR 11	5LF	3' (TYP.)	405.3
107	20	410.0	1+14	1 1/4" HDPE DR 11	5LF	3' (TYP.)	407.3
107	19	410.0	1+24	1 1/4" HDPE DR 11	5LF	3' (TYP.)	407.3
107	18	410.0	1+94	1 1/4" HDPE DR 11	5LF	3' (TYP.)	407.3
107	17	410.0	2+04	1 1/4" HDPE DR 11	5LF	3' (TYP.)	407.3
107	16	410.0	2+74	1 1/4" HDPE DR 11	5LF	3' (TYP.)	407.3

NOTES :

- THE MINIMUM SEPARATION BETWEEN (PARALLEL PIPELINES) WATER MAIN, WATER SERVICE LINE AND PRESSURE SEWER FACILITIES (MUST BE BELOW WATER MAIN OR WATER SERVICE) MUST BE MET, ARE AS FOLLOWS:
HORIZONTAL ≥ 10" MEASURED EDGE TO EDGE VERTICAL ≥ 18", MEASURED EDGE TO EDGE.
- THE MINIMUM SEPARATION BETWEEN (CROSSING PIPELINES) WATER MAIN, WATER SERVICE LINE AND PRESSURE SEWER FACILITIES (MUST BE BELOW WATER MAIN OR WATER SERVICE) MUST BE MET, ARE AS FOLLOWS:
VERTICAL ≥ 18" MEASURED EDGE TO EDGE
- IF THE EXISTING WATER IS AC PIPE, IT SHALL BE REPLACED WITH SAME SIZE DUCTILE IRON PIPE 10 FEET EACH SIDE OF SEWER CROSSING BUT NO LESS THAN 2 FEET INTO BOTH TRENCH WALLS (NO CDF CRADLE ALLOWED).
- LOCATION OF EXISTING UNDERGROUND UTILITIES WAS PROVIDED BY UTILITY LOCATE AND BY AS BUILT RECORDS. UTILITY PAINT MARKS WERE FIELD SURVEYED BY CES NW INC.
- OTHER UTILITY SEPARATION BETWEEN PRESSURE SEWER FACILITIES MUST BE MET, ARE AS FOLLOWS:
HORIZONTAL ≥ 3' MEASURED EDGE TO EDGE VERTICAL ≥ 6", MEASURED EDGE TO EDGE.
- FOR PARCELS IN PEPPER HILL ESTATES AREAS, EXISTING PARCEL NUMBERS AND LOT NUMBERS WILL BE UPDATED AFTER BOUNDARY LINE ADJUSTMENTS ARE RECORDED.
- ALL CLEANOUTS W/PIG PORTS ARE USED AS TRACER WIRE STATIONS.
- FRAMES AND COVERS FOR CLEANOUTS/PIGPORTS NOT SUBJECT TO VEHICULAR TRAFFIC SHALL BE SET 6" ABOVE FINISHED GRADE AND BE PROTECTED BY VALVE BOX PROTECTIVE PADS.



LAKEHAVEN UTILITY DISTRICT PROJECT No. 6304025

PEPPER HILL ESTATES

KING COUNTY, WA

FOR: PACIFIC HOUSING GROUP I, LLC
1420 5TH AVE, SUITE 2200
SEATTLE, WA, 98101-1546
PHONE: (206) 521-5979 - FAX: (206) 224-2860

PROJECT NO.: **05052**

DRAWN BY: **JGC**

ISSUE DATE: **08-28-08**

SHEET REV.: **08-24-10**

FORCE MAIN SANITARY SEWER
57TH AVE S
STA. 0+71.08 TO
STA. 7+38.92
PLAN AND PROFILE

05052SS17.DWG

SS17