

- 53 1-4" ISOLATION GATE VALVE W/BOX
- 72 1-4" ISOLATION GATE VALVE W/BOX
- 73 1-4" HDPE DR 11 WYE  
1-4" HDPE DR 11 SPOOL  
1-4" ISOLATION GATE VALVE W/BOX  
1-4"x3" HDPE DR 11 REDUCER
- 74 1-4" FORCE MAIN CLEANOUT W/PIG PORT #27

**VERTICAL DATUM :**

NAVD 88

**BENCH MARK :**

KING COUNTY SURVEY CONTROL POINT No. 6905,  
SW CORNER OF SECTION 27, T 24 N, R 4 E, W.M.,  
CONCRETE MONUMENT WITH LEAD AND BRASS TACK,  
SET 1.2 FEET BELOW GRADE, IN STANDARD KC MON. CASE.  
ELEVATION = 367.06

N.W. 1/4, SEC. 26, T. 21 N., R. 4 E., W.M.

LAKEHAVEN UTILITY DISTRICT

O Water Plan **8/24/10** X Sewer Plan

Dated **8/24/10**

APPROVED FOR CONSTRUCTION  
SUBJECT TO CHANGES NOTED

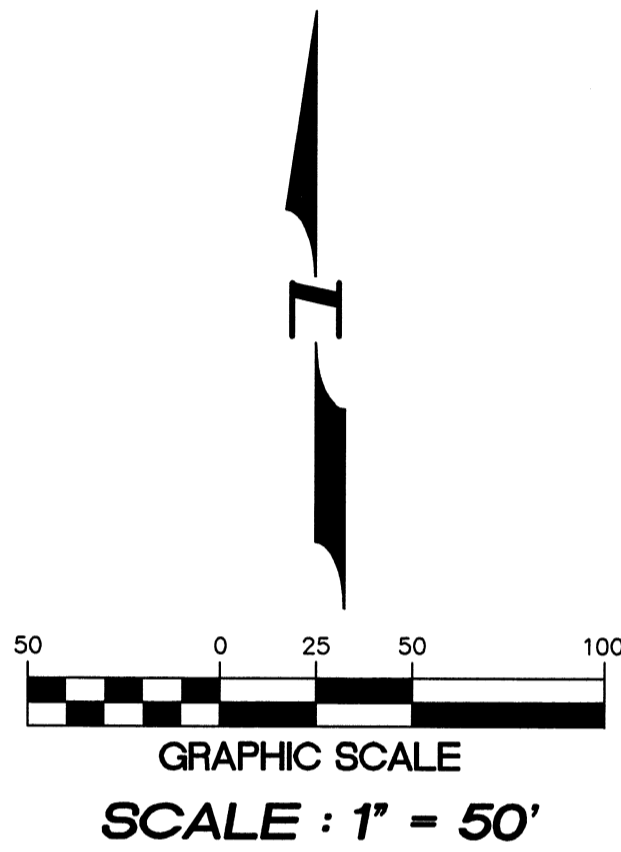
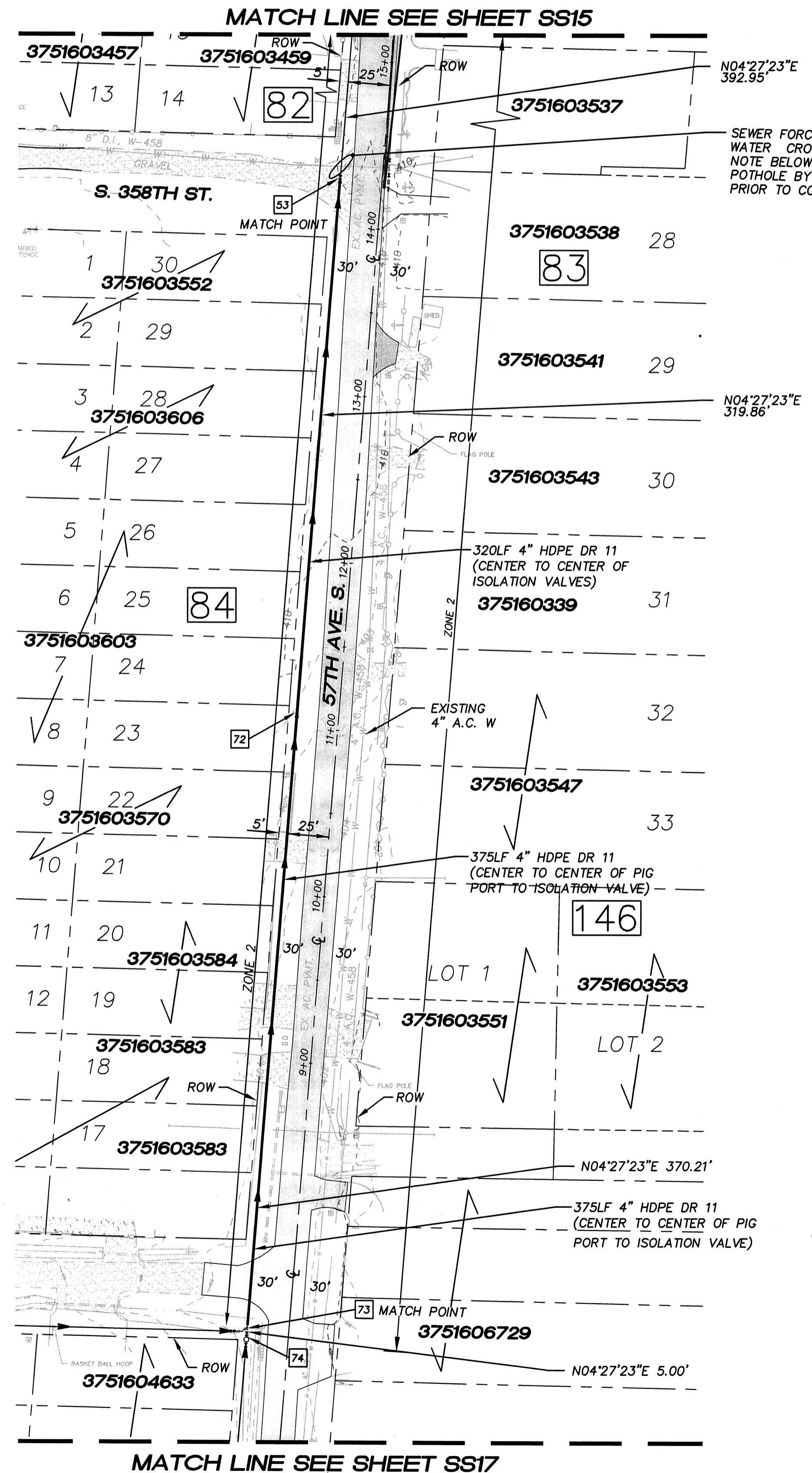
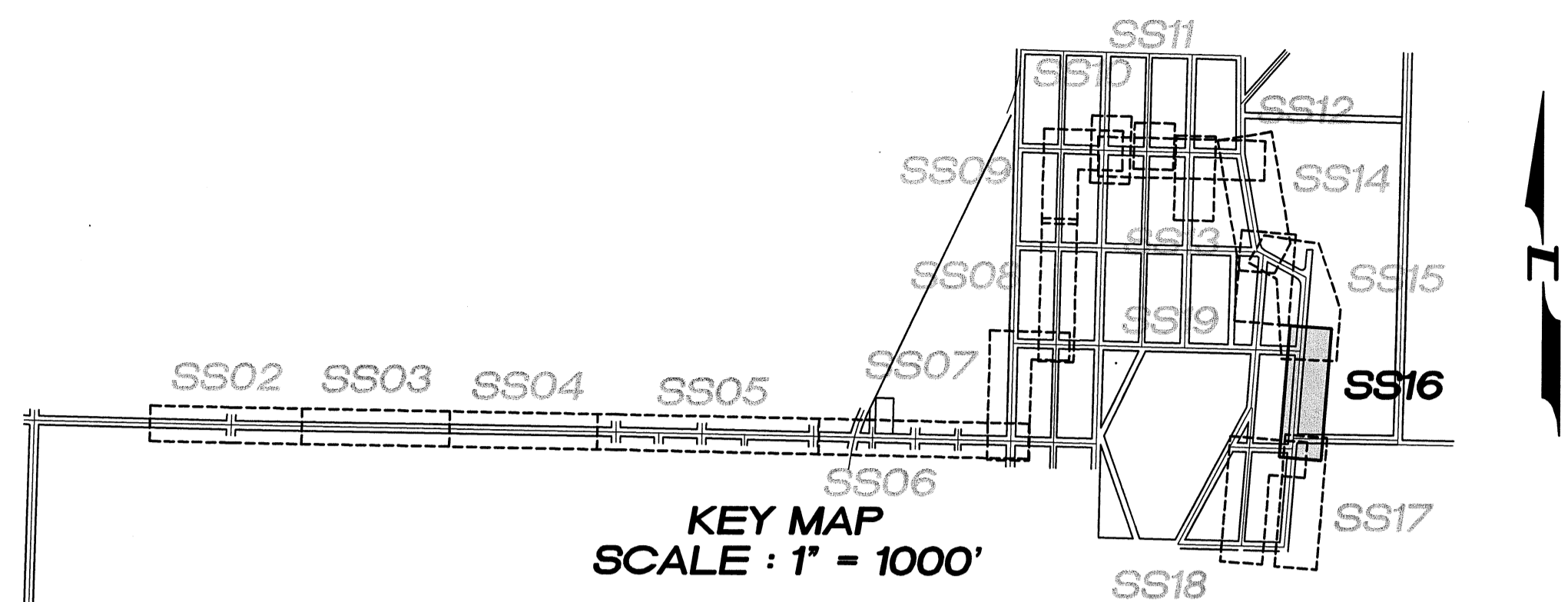
*David J. [Signature]* 9/23/10  
General Manager/District Engineer Date

This construction plan will expire one year from plan approval date, if construction has not commenced.

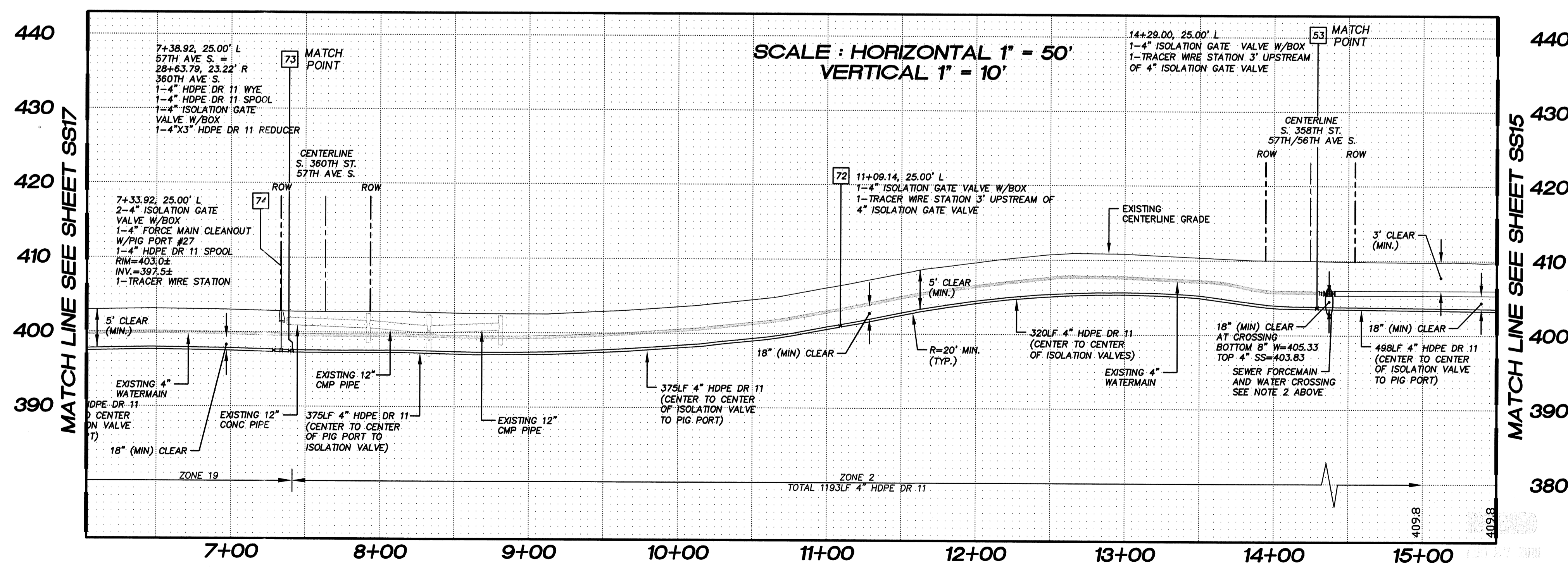


15445 53RD AVE. S.  
SEATTLE, WA 98188  
PHONE: (206) 431-7970  
FAX: (206) 388-1648  
WEB SITE: PACENG.COM

**Pacific Engineering Design, LLC**  
Civil Engineering and Planning Consultants



- NOTES :**
- THE MINIMUM SEPARATION BETWEEN (PARALLEL PIPELINES) WATER MAIN, WATER SERVICE LINE AND PRESSURE SEWER FACILITIES (MUST BE BELOW WATER MAIN OR WATER SERVICE) MUST BE MET, ARE AS FOLLOWS:  
HORIZONTAL ≥ 10" MEASURED EDGE TO EDGE VERTICAL ≥ 18", MEASURED EDGE TO EDGE.
  - THE MINIMUM SEPARATION BETWEEN (CROSSING PIPELINES) WATER MAIN, WATER SERVICE LINE AND PRESSURE SEWER FACILITIES (MUST BE BELOW WATER MAIN OR WATER SERVICE) MUST BE MET, ARE AS FOLLOWS:  
HORIZONTAL ≥ 10" MEASURED EDGE TO EDGE VERTICAL ≥ 18" MEASURED EDGE TO EDGE.
  - IF THE EXISTING WATER IS AC PIPE, IT SHALL BE REPLACED WITH SAME SIZE DUCTILE IRON PIPE 10 FEET EACH SIDE OF SEWER CROSSING BUT NO LESS THAN 2 FEET INTO BOTH TRENCH WALLS (NO CDF CRADLE ALLOWED).
  - LOCATION OF EXISTING UNDERGROUND UTILITIES WAS PROVIDED BY UTILITY LOCATE AND BY AS BUILT RECORDS. UTILITY PAINT MARKS WERE FIELD SURVEYED BY CES NW INC.
  - OTHER UTILITY SEPARATION BETWEEN PRESSURE SEWER FACILITIES MUST BE MET, ARE AS FOLLOWS:  
HORIZONTAL ≥ 3" MEASURED EDGE TO EDGE VERTICAL ≥ 6", MEASURED EDGE TO EDGE.
  - FOR PARCELS IN PEPPER HILL ESTATES AREAS, EXISTING PARCEL NUMBERS AND LOT NUMBERS WILL BE UPDATED AFTER BOUNDARY LINE ADJUSTMENTS ARE RECORDED.
  - ALL CLEANOUTS W/PIG PORTS ARE USED AS TRACER WIRE STATION.
  - FRAMES AND COVERS FOR CLEANOUTS/PIGPORTS NOT SUBJECT TO VEHICULAR TRAFFIC SHALL BE SET 6" ABOVE FINISHED GRADE AND BE PROTECTED BY VALVE BOX PROTECTIVE PADS.



LAKEHAVEN UTILITY DISTRICT PROJECT No. 6304025  
**PEPPER HILL ESTATES**  
KING COUNTY, WA

FOR:  
PACIFIC HOUSING GROUP I, LLC  
1420 5TH AVE, SUITE 2200  
SEATTLE, WA 98101-1346  
PHONE: (206) 521-9979, FAX: (206) 224-2880

PROJECT NO.: **05052**  
DRAWN BY: **JGC**  
ISSUE DATE: **08-26-08**  
SHEET REV.: **08-24-10**

**FORCE MAIN  
SANITARY SEWER  
57TH AVE S  
STA. 7+38.92 TO  
STA. 14+29.00  
PLAN AND PROFILE**

05052SS16-SS16.DWG  
**SS16**