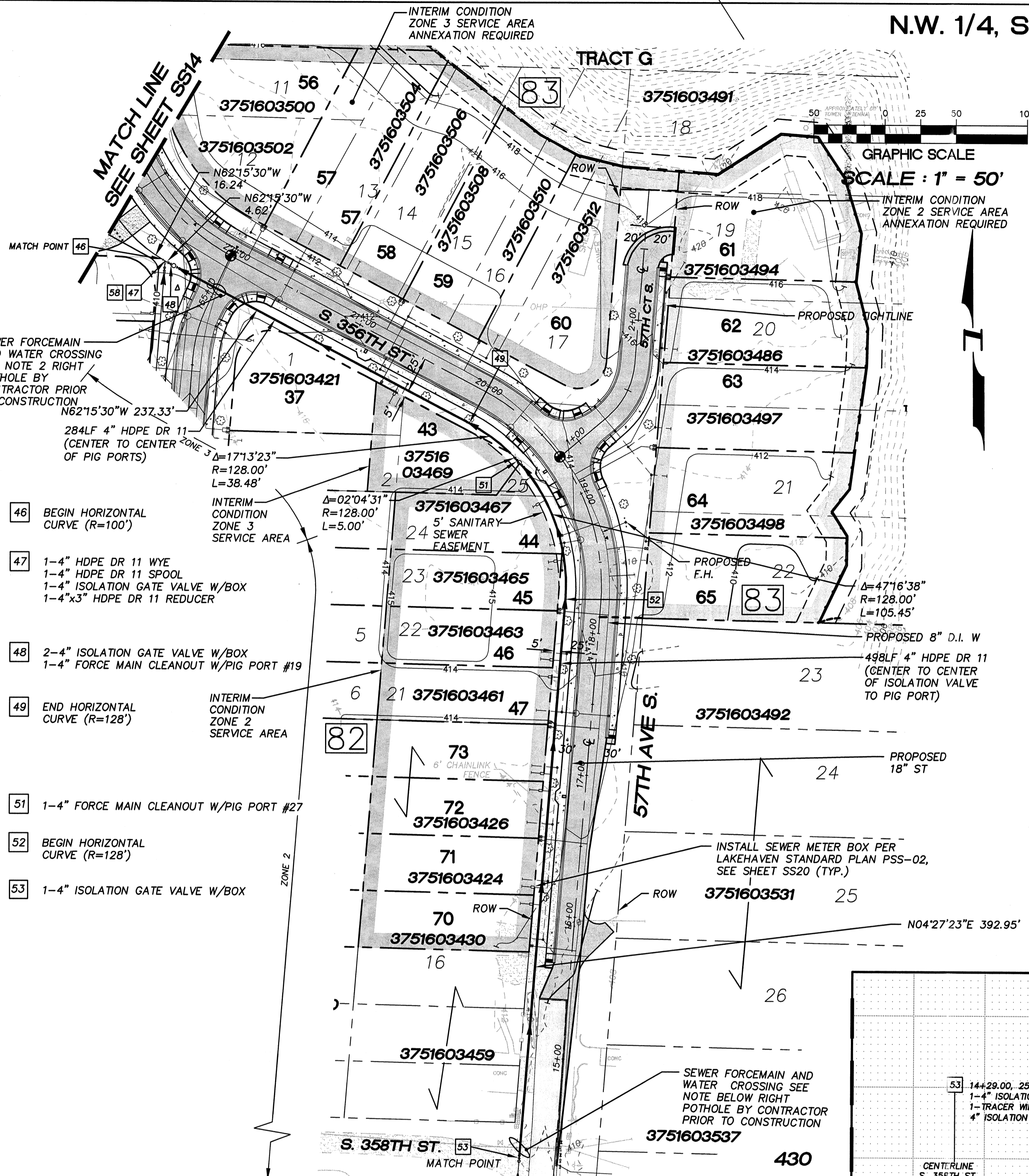


N.W. 1/4, SEC. 26, T. 21 N., R. 4 E., W.M.



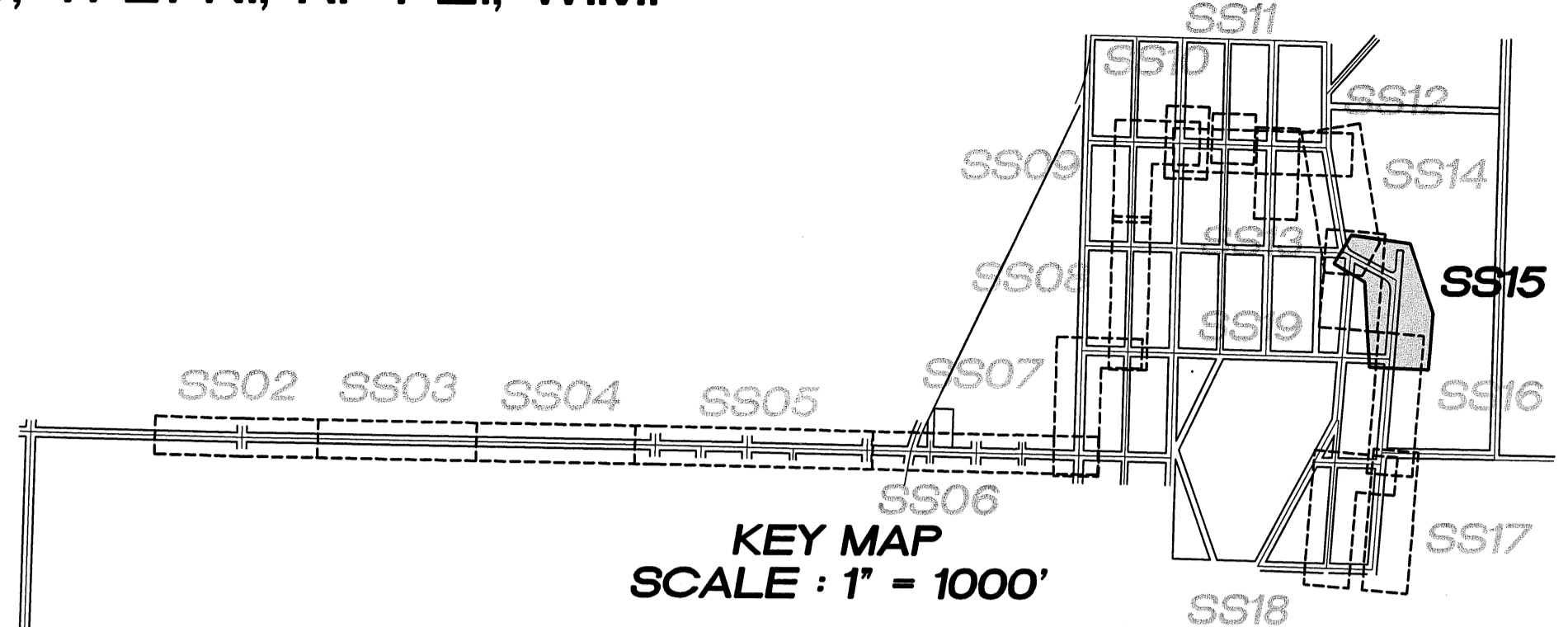
- 46 BEGIN HORIZONTAL CURVE (R=100')
- 47 1-4" HDPE DR 11 WYE
1-4" HDPE DR 11 SPOOL
1-4" ISOLATION GATE VALVE W/BOX
1-4"x3" HDPE DR 11 REDUCER
- 48 2-4" ISOLATION GATE VALVE W/BOX
1-4" FORCE MAIN CLEANOUT W/PIG PORT #19
- 49 END HORIZONTAL CURVE (R=128')
- 51 1-4" FORCE MAIN CLEANOUT W/PIG PORT #27
- 52 BEGIN HORIZONTAL CURVE (R=128')
- 53 1-4" ISOLATION GATE VALVE W/BOX

All STUBS 1 1/4" HDPE DR 11

BLOCK No.	LOT No.	PAD ELEV.	STA.	SIZE	LENGTH	DEPTH AT P.L.	INV. AT P.L.
82	43	413.5	1+81	1" HDPE DR11	5LF	3' (TYP.)	410.8
82	44	414.5	0+34	1" HDPE DR11	1LF	3' (TYP.)	411.8
82	45	414.5	0+78	1" HDPE DR11	2LF	3' (TYP.)	411.8
82	46	414.5	1+49	1" HDPE DR11	5LF	3' (TYP.)	411.8
82	47	414.5	1+61	1" HDPE DR11	5LF	3' (TYP.)	411.8
82	73	413.0	2+29	1" HDPE DR11	5LF	3' (TYP.)	410.3
82	72	413.0	2+41	1" HDPE DR11	5LF	3' (TYP.)	410.3
82	71	413.0	3+09	1" HDPE DR11	5LF	3' (TYP.)	410.3
82	70	412.0	3+21	1" HDPE DR11	5LF	3' (TYP.)	409.3

VERTICAL DATUM:
NAVD 88

BENCH MARK:
KING COUNTY SURVEY CONTROL POINT No. 6905, SW CORNER OF SECTION 27, T. 24 N., R. 4 E., W.M., CONCRETE MONUMENT WITH LEAD AND BRASS TACK, SET 1.2 FEET BELOW GRADE, IN STANDARD KC MON. CASE.
ELEVATION = 367.06



- NOTES:**
- THE MINIMUM SEPARATION BETWEEN (PARALLEL PIPELINES) WATER MAIN, WATER SERVICE LINE AND PRESSURE SEWER FACILITIES (MUST BE BELOW WATER MAIN OR WATER SERVICE) MUST BE MET, ARE AS FOLLOWS:
HORIZONTAL ≥ 10' MEASURED EDGE TO EDGE VERTICAL ≥ 18", MEASURED EDGE TO EDGE.
 - THE MINIMUM SEPARATION BETWEEN (CROSSING PIPELINES) WATER MAIN, WATER SERVICE LINE AND PRESSURE SEWER FACILITIES (MUST BE BELOW WATER MAIN OR WATER SERVICE) MUST BE MET, ARE AS FOLLOWS:
VERTICAL ≥ 18" MEASURED EDGE TO EDGE
 - IF THE EXISTING WATER IS AC PIPE, IT SHALL BE REPLACED WITH SAME SIZE DUCTILE IRON PIPE 10 FEET EACH SIDE OF SEWER CROSSING BUT NO LESS THAN 2 FEET INTO BOTH TRENCH WALLS (NO CDF CRADLE ALLOWED).
 - LOCATION OF EXISTING UNDERGROUND UTILITIES WAS PROVIDED BY UTILITY LOCATE AND BY AS BUILT RECORDS. UTILITY PAINT MARKS WERE FIELD SURVEYED BY CES NW INC.
 - OTHER UTILITY SEPARATION BETWEEN PRESSURE SEWER FACILITIES MUST BE MET, ARE AS FOLLOWS:
HORIZONTAL ≥ 3' MEASURED EDGE TO EDGE VERTICAL ≥ 6", MEASURED EDGE TO EDGE.
 - FOR PARCELS IN PEPPER HILL ESTATES AREAS, EXISTING PARCEL NUMBERS AND LOT NUMBERS WILL BE UPDATED AFTER BOUNDARY LINE ADJUSTMENTS ARE RECORDED.
 - ALL CLEANOUTS W/PIG PORTS ARE USED AS TRACE WIRE STATIONS.
 - FRAMES AND COVERS FOR CLEANOUTS/PIGPORTS NOT SUBJECT TO VEHICULAR TRAFFIC SHALL BE SET 6" ABOVE FINISHED GRADE AND BE PROTECTED BY VALVE BOX PROTECTIVE PADS.
 - LOT 48 TO 65 IN BLOCK 83 (TOTAL 18 LOTS) ARE FUTURE LOTS POTENTIALLY SERVED BY LPS SYSTEM UNTIL ANNEXATION IS APPROVED.

LAKEHAVEN UTILITY DISTRICT
0 Water Plan
Sewer Plan
Dated 8/24/10
APPROVED FOR CONSTRUCTION SUBJECT TO CHANGES NOTED
General Manager/District Engineer
Date 9/23/10



15445 53RD AVE. S.
SEATTLE, WA 98188
PHONE: (206) 431-7970
FAX: (206) 388-1648
WEB SITE: PACENG.COM

Pacific Engineering Design, LLC
Civil Engineering and Planning Consultants

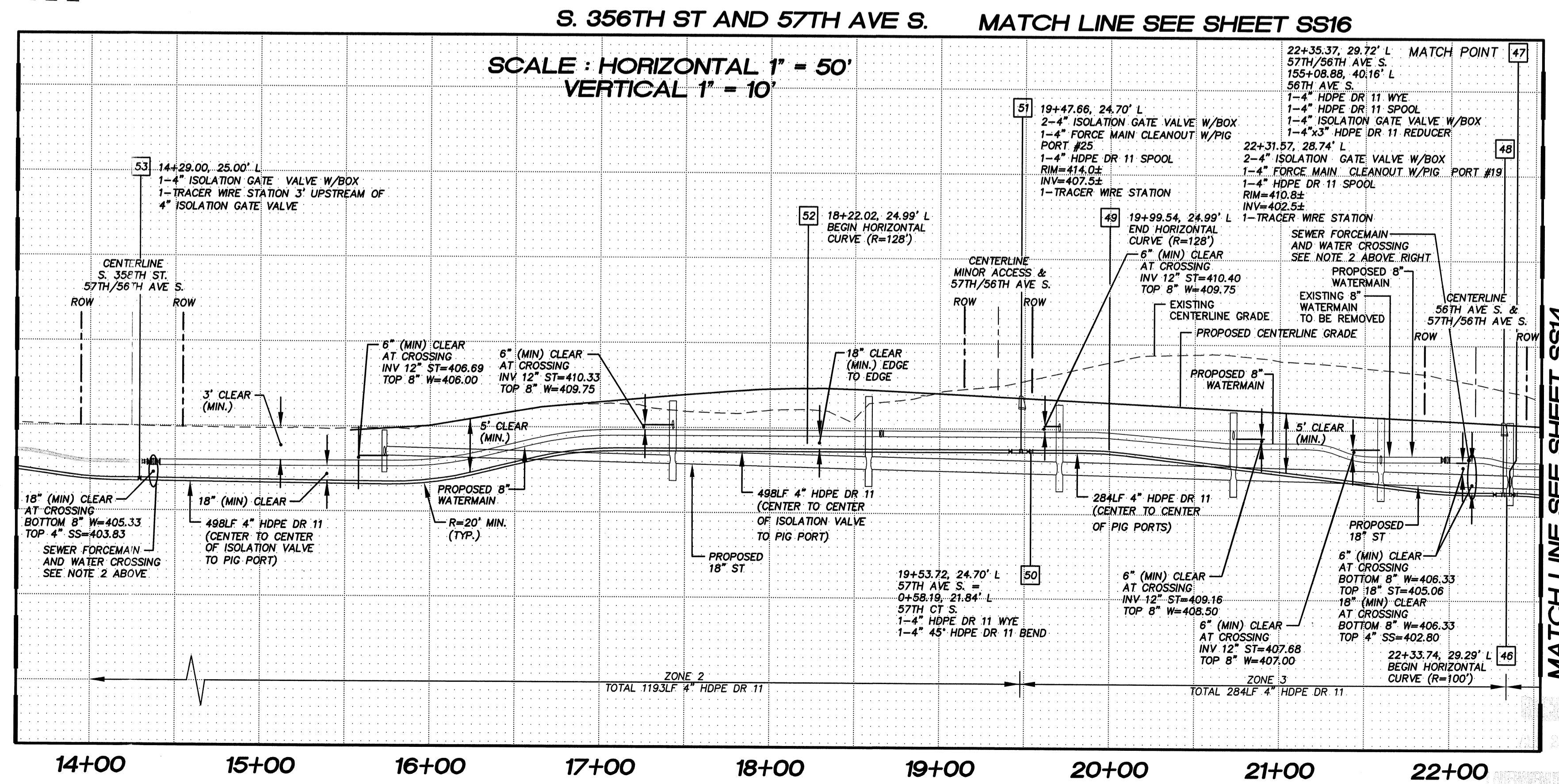
LAKEHAVEN UTILITY DISTRICT PROJECT No. 6304025
PEPPER HILL ESTATES
KING COUNTY, WA.

FOR:
PACIFIC HOUSING GROUP I, LLC
1420 5TH AVE, SUITE 2200
SEATTLE, WA, 98101-9346
PHONE: (206) 521-5979, FAX: (206) 254-2880

PROJECT NO.: 05052
DRAWN BY: JGC
ISSUE DATE: 09-30-05
SHEET REV.: 08-24-10

FORCE MAIN SANITARY SEWER S 356TH ST AND 57TH AVE S STA. 14+29.00 TO STA. 22+35.37 PLAN AND PROFILE

05052SS15.DWG
SS15



MATCH LINE SEE SHEET SS16

MATCH LINE SEE SHEET SS14

05052SS15.DWG
SS15