

- 60 1-2" CLEANOUT W/PIG PORT #16
- 32 2-2" HDPE DR 11 SPOOLS
- 1-2" ISOLATION GATE VALVE W/BOX
- 30 SEE SHEET SS12
- 31 SEE SHEET SS12
- 32 SEE SHEET SS12
- 66 1-2" CLEANOUT W/PIG PORT #17
- 2-2" HDPE DR 11 SPOOLS
- 1-2" ISOLATION GATE VALVE W/BOX
- 1 SEE SHEET SS12

N.W. 1/4, SEC. 26, T. 21 N., R. 4 E., W.M.

**VERTICAL DATUM :**

NAVD 88

**BENCH MARK :**

KING COUNTY SURVEY CONTROL POINT No. 6905.  
SW CORNER OF SECTION 27, T 24 N, R 4 E, W.M.,  
CONCRETE MONUMENT WITH LEAD AND BRASS TACK,  
SET 1.2 FEET BELOW GRADE, IN STANDARD KC MON. CASE.  
ELEVATION = 367.06

LAKEHAVEN UTILITY DISTRICT

0 Water Plan **8/24/10** Sewer Plan

Dated **8/24/10**

APPROVED FOR CONSTRUCTION  
SUBJECT TO CHANGES NOTED

*[Signature]* 9/23/10  
General Manager/District Engineer Date

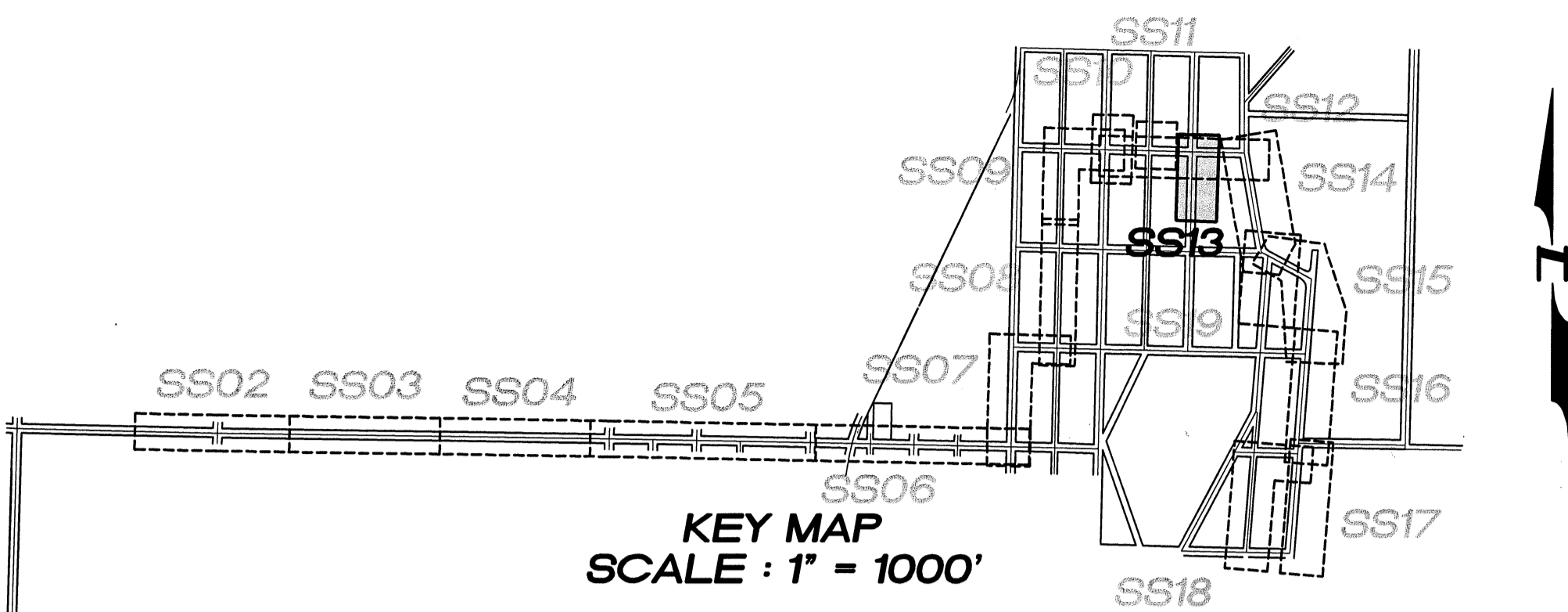
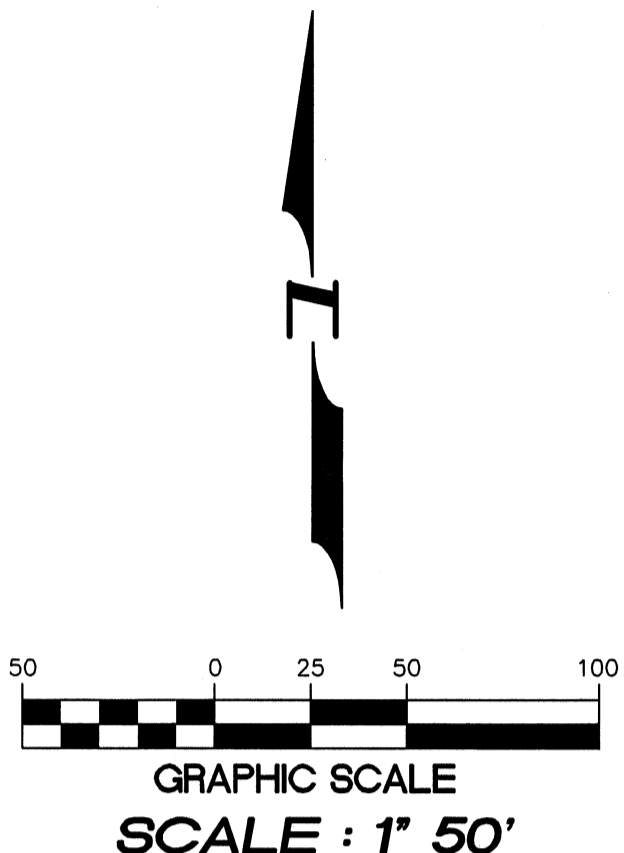
The District's review is not a check of any dimension or quantities of any sort. No changes shall be made in the plans except by the consent of the District.

This construction plan will expire one year from plan approval date, if construction has not commenced.



15445 53RD AVE. S.  
SEATTLE, WA 98188  
PHONE: (206) 431-7970  
FAX: (206) 388-1648  
WEB SITE: PACENG.COM

Pacific Engineering Design, LLC  
Civil Engineering and Planning Consultants

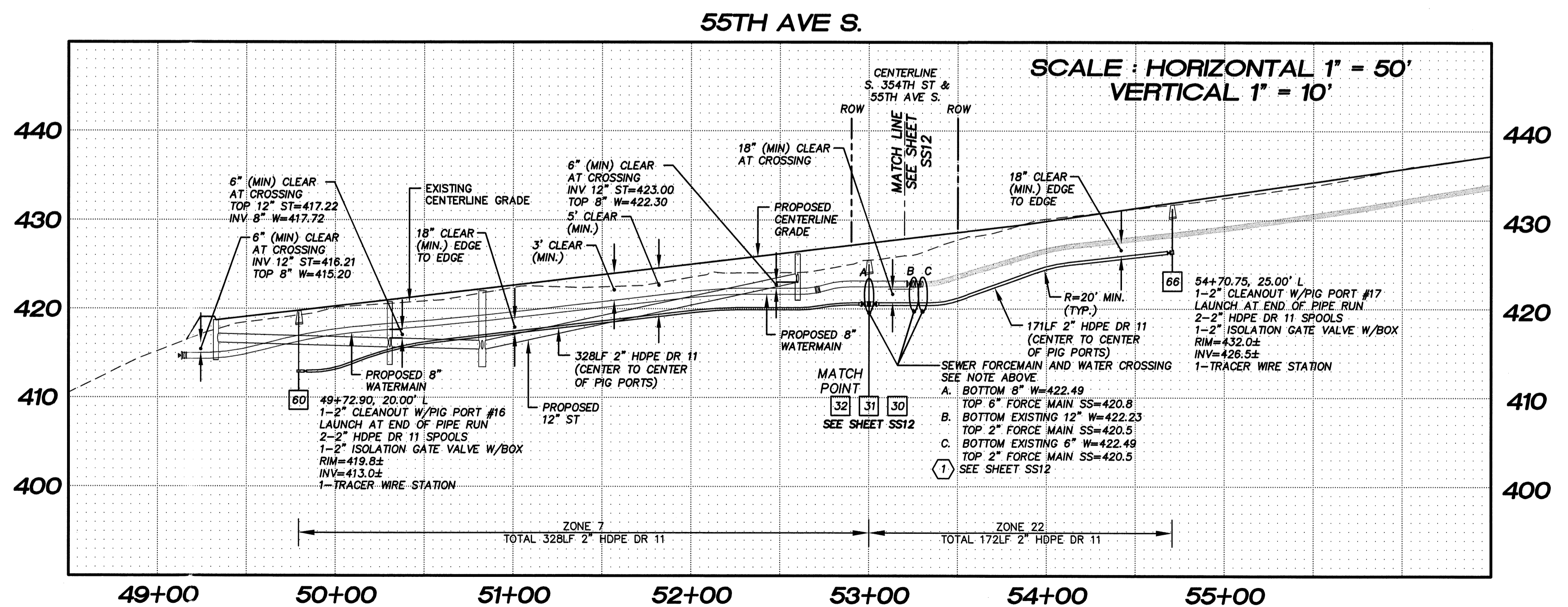
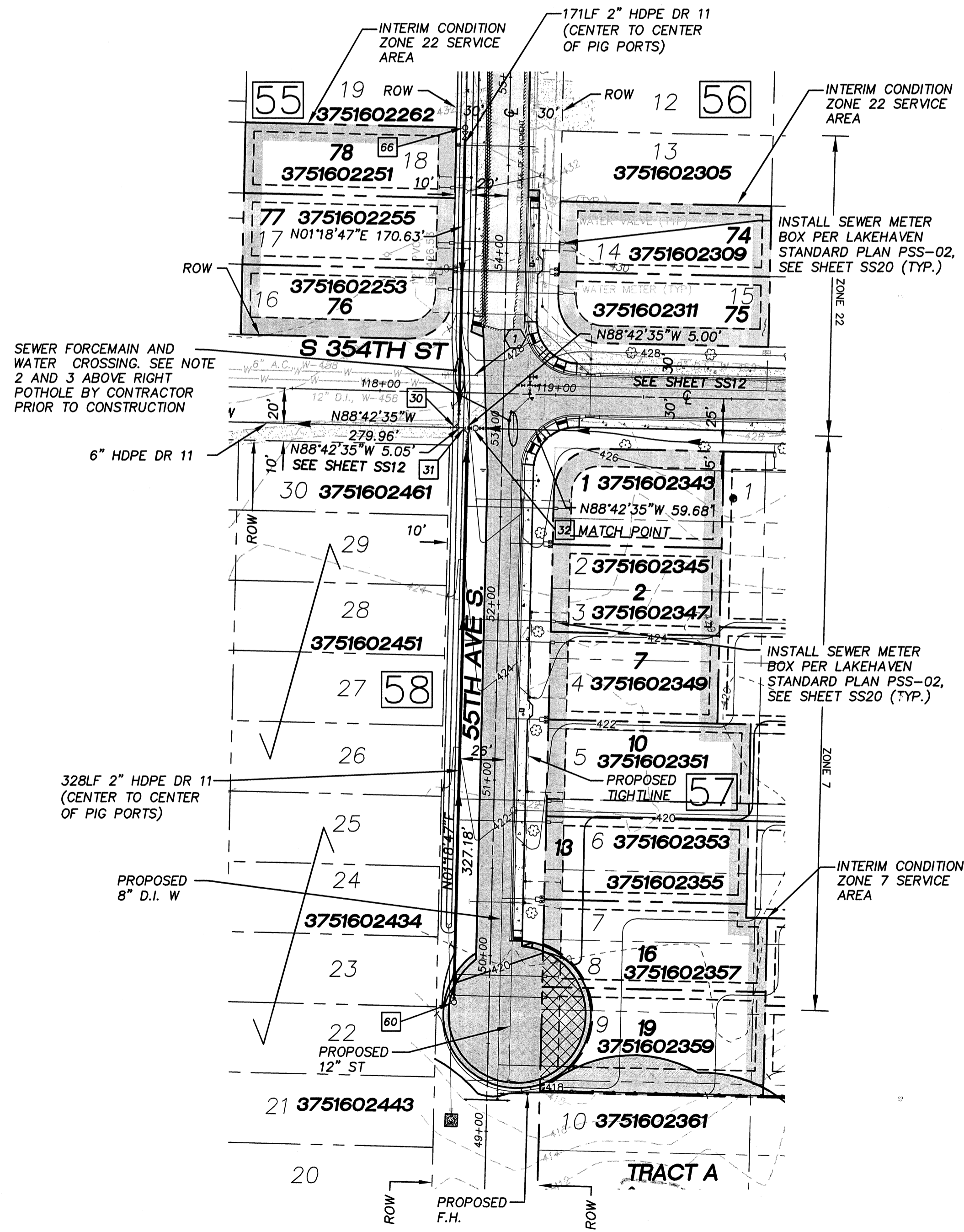


**ALL STUBS 1 1/4" HDPE DR 11  
SANITARY SIDE SEWER STUB**

BLOCK No.	LOT No.	PAD ELEV.	STA.	SIZE	LENGTH	DEPTH AT P.L.	INV. AT P.L.
57	1	425.0	0+39	1 1/4" HDPE DR 11	50LF	3' (TYP.)	422.3
57	2	425.0	1+03	1 1/4" HDPE DR 11	50LF	3' (TYP.)	422.3
57	7	423.0	1+15	1 1/4" HDPE DR 11	50LF	3' (TYP.)	420.3
57	10	421.0	2+05	1 1/4" HDPE DR 11	50LF	3' (TYP.)	418.3
57	13	419.0	2+17	1 1/4" HDPE DR 11	50LF	3' (TYP.)	416.3
57	16	417.0	3+05	1 1/4" HDPE DR 11	50LF	3' (TYP.)	414.3
57	19	418.0	3+17	1 1/4" HDPE DR 11	50LF	3' (TYP.)	415.3
56	75	429.0	0+72	1 1/4" HDPE DR 11	55 LF	3' (TYP.)	426.3
55	76	429.0	0+73	1 1/4" HDPE DR 11	5LF	3' (TYP.)	426.3
55	77	430.0	0+99	1 1/4" HDPE DR 11	5LF	3' (TYP.)	427.3
56	74	430.0	1+00	1 1/4" HDPE DR 11	55 LF	3' (TYP.)	427.3
55	78	431.0	1+31	1 1/4" HDPE DR 11	5LF	3' (TYP.)	428.3

**NOTES :**

- THE MINIMUM SEPARATION BETWEEN (PARALLEL PIPELINES) WATER MAIN, WATER SERVICE LINE AND PRESSURE SEWER FACILITIES (MUST BE BELOW WATER MAIN OR WATER SERVICE) MUST BE MET, ARE AS FOLLOWS:  
HORIZONTAL ≥ 10' MEASURED EDGE TO EDGE VERTICAL ≥ 18", MEASURED EDGE TO EDGE.
- THE MINIMUM SEPARATION BETWEEN (CROSSING PIPELINES) WATER MAIN, WATER SERVICE LINE AND PRESSURE SEWER FACILITIES (MUST BE BELOW WATER MAIN OR WATER SERVICE) MUST BE MET, ARE AS FOLLOWS:  
VERTICAL > 18" MEASURED EDGE TO EDGE
- IF THE EXISTING WATER IS AC PIPE, IT SHALL BE REPLACED WITH SAME SIZE DUCTILE IRON PIPE 10 FEET EACH SIDE OF SEWER CROSSING BUT NO LESS THAN 2 FEET INTO BOTH TRENCH WALLS (NO CDF CRADLE ALLOWED).
- LOCATION OF EXISTING UNDERGROUND UTILITIES WAS PROVIDED BY UTILITY LOCATE AND BY AS BUILT RECORDS.. UTILITY PAINT MARKS WERE FIELD SURVEYED BY CES NW INC.
- OTHER UTILITY SEPARATION BETWEEN PRESSURE SEWER FACILITIES MUST BE MET, ARE AS FOLLOWS:  
HORIZONTAL ≥ 3' MEASURED EDGE TO EDGE VERTICAL ≥ 6", MEASURED EDGE TO EDGE.
- FOR PARCELS IN PEPPER HILL ESTATES AREAS, EXISTING PARCEL NUMBERS AND LOT NUMBERS WILL BE UPDATED AFTER BOUNDARY LINE ADJUSTMENTS ARE RECORDED.
- ALL CLEANOUTS W/PIG PORTS ARE USED AS TRACER WIRE STATIONS.
- FRAMES AND COVERS FOR CLEANOUTS/PIGPORTS NOT SUBJECT TO VEHICULAR TRAFFIC SHALL BE SET 6" ABOVE FINISHED GRADE AND BE PROTECTED BY VALVE BOX PROTECTIVE PADS.



LAKEHAVEN UTILITY DISTRICT PROJECT No. 6304025  
PEPPER HILL ESTATES  
FOR: PACIFIC HOUSING GROUP I, LLC  
1420 5TH AVE SUITE 2200  
SEATTLE, WA, 98101-1346  
PHONE: (206) 521-5979, FAX: (206) 224-2880

PROJECT NO.: **05052**  
DRAWN BY: **JGC**  
ISSUE DATE: **09-30-05**  
SHEET REV.: **08-24-10**

**FORCE MAIN  
SANITARY SEWER  
55TH AVE. S.  
PLAN AND  
PROFILE**

05052SS11.DWG  
**SS13**