

N.W. 1/4, SEC. 26, T. 21 N., R. 4 E., W.M.

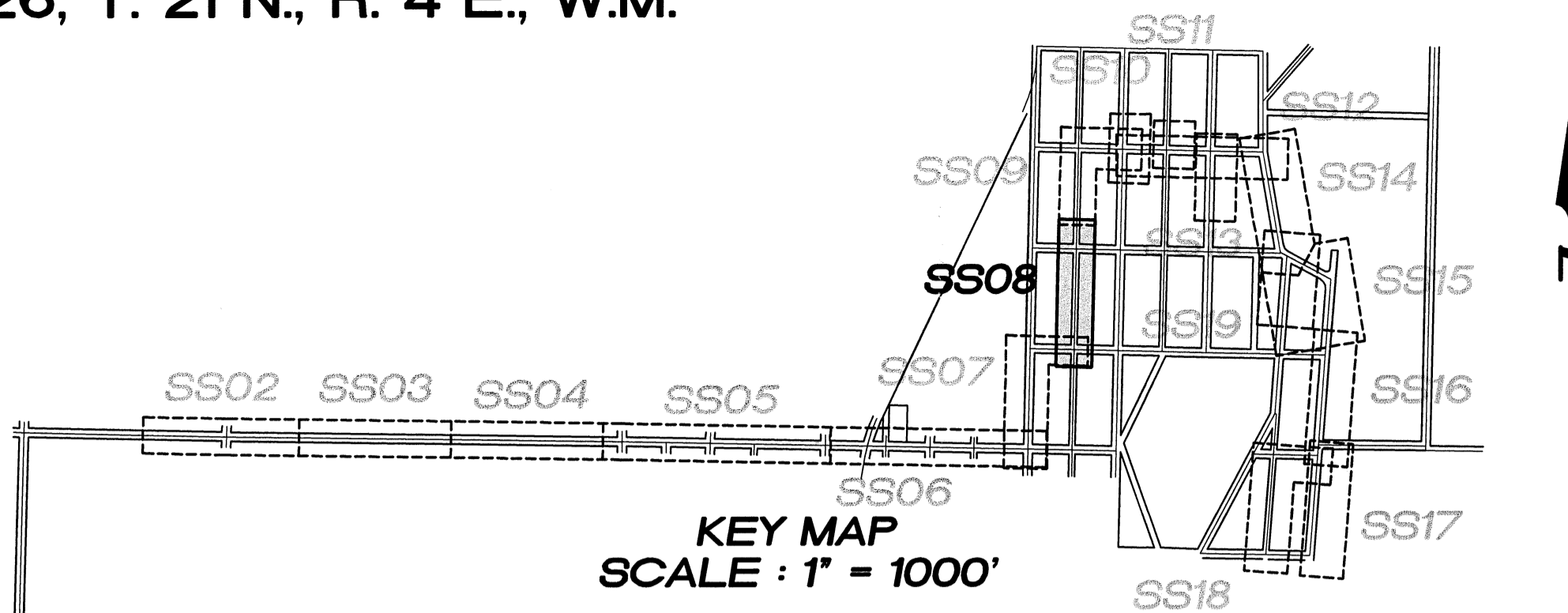
- 21 1-6" CLEANOUT W/PIG PORT #7
- 2-6" HDPE DR 11 SPOOL
- 1-6" ISOLATION GATE VALVE W/ BOX
- 22 1-6" CLEANOUT W/PIG PORT #7
- 23 1-6" ISOLATION GATE VALVE W/BOX

**VERTICAL DATUM :**

NAVD 88

**BENCH MARK :**

KING COUNTY SURVEY CONTROL POINT No. 6905,  
SW CORNER OF SECTION 27, T 24 N, R 4 E, W.M.,  
CONCRETE MONUMENT WITH LEAD AND BRASS TACK,  
SET 1.2 FEET BELOW GRADE, IN STANDARD KC MON. CASE.  
ELEVATION = 367.06



**NOTES :**

1. THE MINIMUM SEPARATION BETWEEN (PARALLEL PIPELINES) WATER MAIN, WATER SERVICE LINE AND PRESSURE SEWER FACILITIES (MUST BE BELOW WATER MAIN OR WATER SERVICE) MUST BE MET, ARE AS FOLLOWS:  
HORIZONTAL  $\geq 10'$  MEASURED EDGE TO EDGE VERTICAL  $\geq 18"$ , MEASURED EDGE TO EDGE.
2. THE MINIMUM SEPARATION BETWEEN (CROSSING PIPELINES) WATER MAIN, WATER SERVICE LINE AND PRESSURE SEWER FACILITIES (MUST BE BELOW WATER MAIN OR WATER SERVICE) MUST BE MET, ARE AS FOLLOWS:  
VERTICAL  $\geq 18"$  MEASURED EDGE TO EDGE.
3. IF THE EXISTING WATER IS AC PIPE, IT SHALL BE REPLACED WITH SAME SIZE DUCTILE IRON PIPE 10 FEET EACH SIDE OF SEWER CROSSING BUT NO LESS THAN 2 FEET INTO BOTH TRENCH WALLS (NO CDF CRADLE ALLOWED).
4. LOCATION OF EXISTING UNDERGROUND UTILITIES WAS PROVIDED BY UTILITY LOCATE AND BY AS BUILT RECORDS. UTILITY PAINT MARKS WERE FIELD SURVEYED BY CES NW INC.
5. OTHER UTILITY SEPARATION BETWEEN PRESSURE SEWER FACILITIES MUST BE MET, ARE AS FOLLOWS:  
HORIZONTAL  $\geq 3'$  MEASURED EDGE TO EDGE VERTICAL  $\geq 6"$ , MEASURED EDGE TO EDGE.
6. FOR PARCELS IN PEPPER HILL ESTATES AREAS, EXISTING PARCEL NUMBERS AND LOT NUMBERS WILL BE UPDATED AFTER BOUNDARY LINE ADJUSTMENTS ARE RECORDED.
7. ALL CLEANOUTS W/PIG PORTS ARE USED AS TRACER WIRE STATIONS.
8. FRAMES AND COVERS FOR CLEANOUTS/PIGPORTS NOT SUBJECT TO VEHICULAR TRAFFIC SHALL BE SET 6" ABOVE FINISHED GRADE AND BE PROTECTED BY VALVE BOX PROTECTIVE PADS.

LAKEHAVEN UTILITY DISTRICT  
 O Water Plan  Sewer Plan   
 Dated **8/24/10**  
 APPROVED FOR CONSTRUCTION  
 SUBJECT TO CHANGES NOTED  
 The District's review is not a check of any dimension or quantities and will not relieve the Developer from responsibility for errors of any sort. No changes shall be made in the plans except by the consent of the District.  
 General Manager/District Engineer *David W. Denny* Date **9/23/10**  
 This construction plan will expire one year from plan approval date, if construction has not commenced.



15445 53RD AVE. S.  
SEATTLE, WA 98188  
PHONE: (206) 431-7970  
FAX: (206) 388-1648  
WEB SITE: PACENG.COM

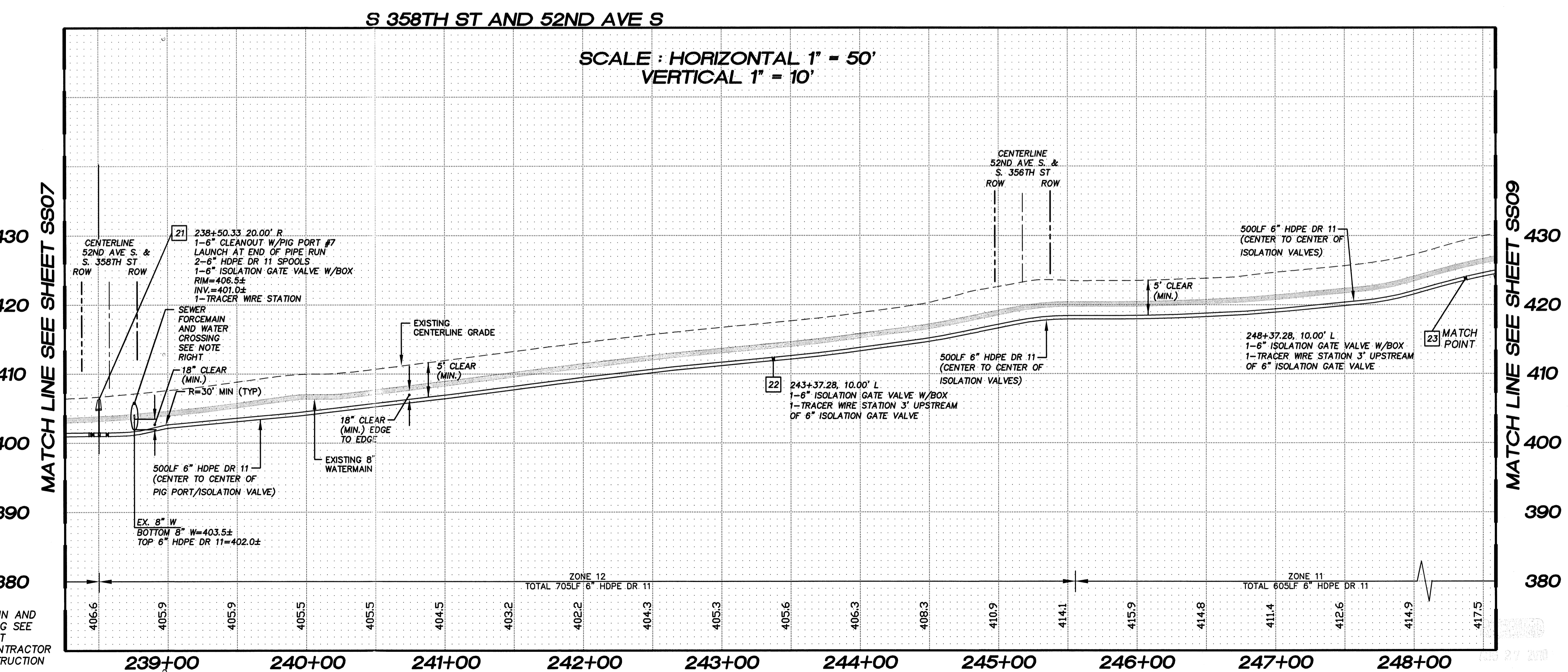
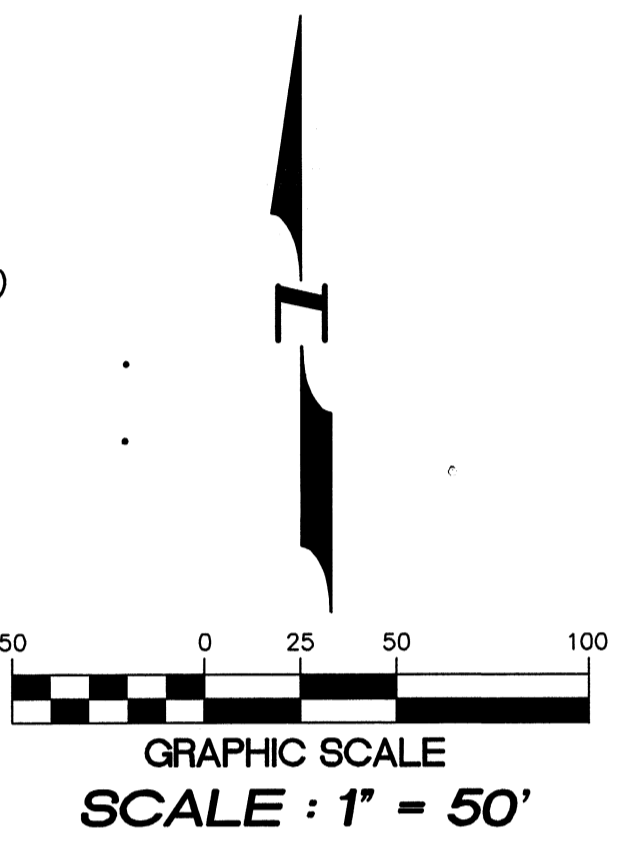
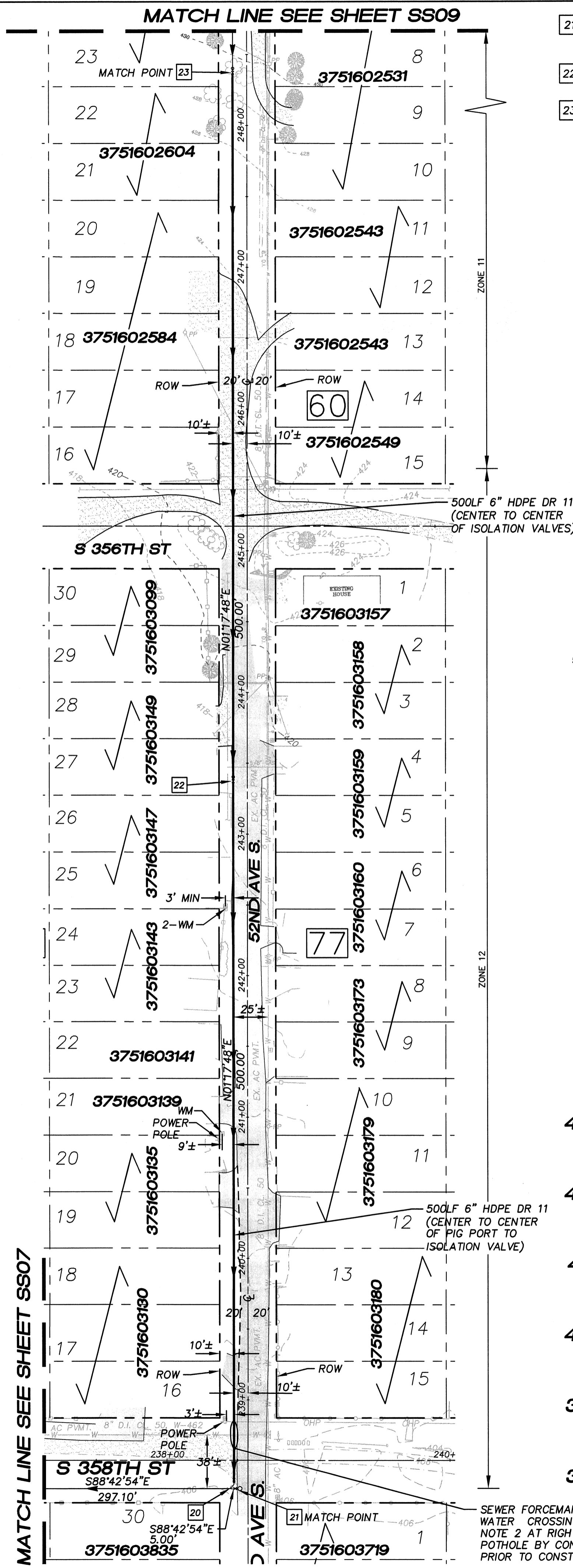
Pacific Engineering Design, LLC  
 Civil Engineering and Planning Consultants

LAKEHAVEN UTILITY DISTRICT PROJECT No. 6304025  
 PEPPER HILL ESTATES  
 KING COUNTY, WA.  
 FOR PEPPER HILL HOUSING GROUP I, LLC  
 1400 5TH AVE SUITE 2200  
 SEATTLE, WA 98101-8346  
 PHONE: (206) 521-5979 FAX: (206) 224-2880

PROJECT NO.: 05052  
 DRAWN BY: JGC  
 ISSUE DATE: 09-30-05  
 SHEET REV.: 08-24-10

FORCE MAIN SANITARY SEWER  
 S 358TH ST/52ND AVE S  
 STA. 238+50.33 TO STA. 248+37.28  
 PLAN AND PROFILE

05052SS08.DWG  
**SS08**



SEWER FORCEMAIN AND WATER CROSSING SEE NOTE 2 AT RIGHT POTHOLE BY CONTRACTOR PRIOR TO CONSTRUCTION