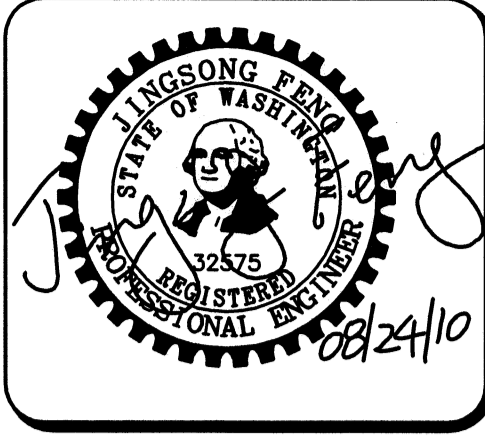


N.W. 1/4, SEC. 26, T. 21 N., R. 4 E., W.M.

LAKEHAVEN UTILITY DISTRICT
 O Water Plan Sewer Plan
 Dated **8/24/10**
 APPROVED FOR CONSTRUCTION
 SUBJECT TO CHANGES NOTED
 The District's review is not a check of any dimension or quantities and will not relieve the Developer from responsibility for errors of any sort. No changes shall be made in the plans except by the consent of the District.
 General Manager/District Engineer *[Signature]* Date **9/23/10**
 This construction plan will expire one year from plan approval date, if construction has not commenced.



15445 53RD AVE. S.
 SEATTLE, WA 98188
 PHONE: (206) 431-7970
 FAX: (206) 388-1648
 WEB SITE: PACENG.COM

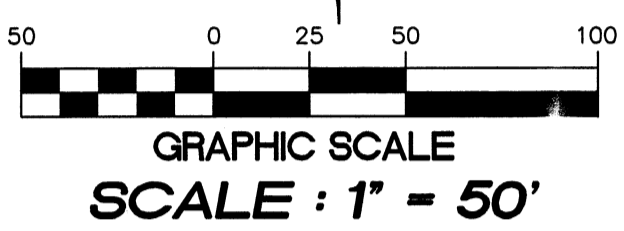
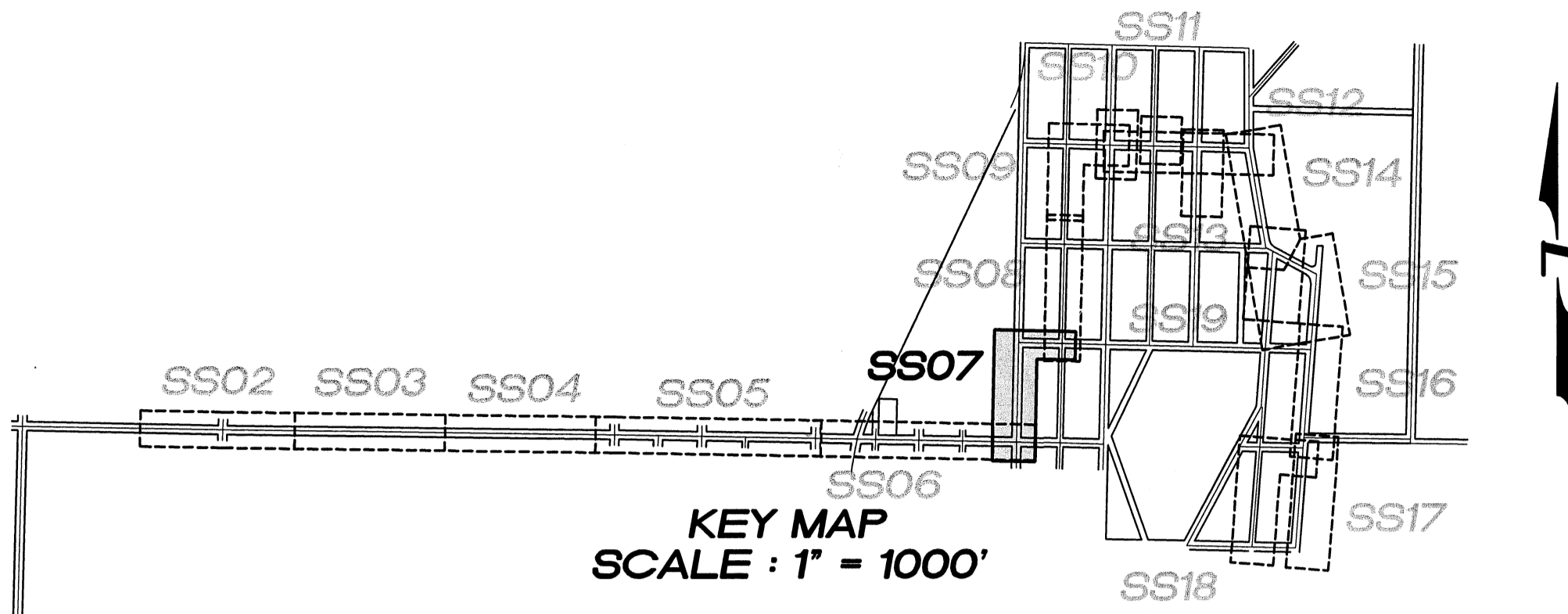
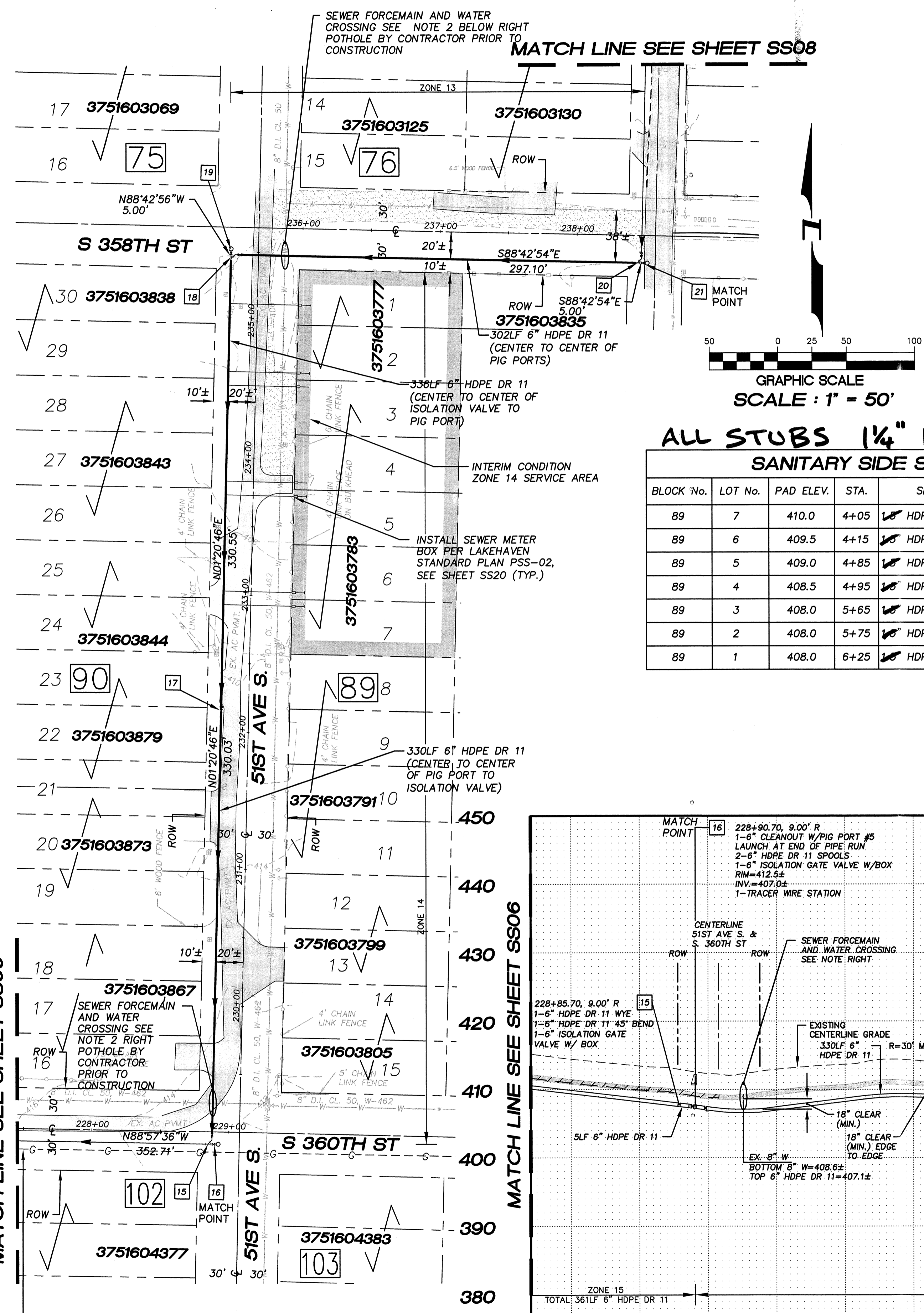
Pacific Engineering Design, LLC
 Civil Engineering and Planning Consultants

LAKEHAVEN UTILITY DISTRICT PROJECT No. 6304025
 PEPPER HILL ESTATES
 KING COUNTY, WA.
 FOR PACIFIC HOUSING GROUP I, LLC
 1400 1ST AVE S, SUITE 2000
 SEATTLE, WA 98101-6246
 PHONE: (206) 521-5979 FAX: (206) 224-2880

PROJECT NO.: 05052
 DRAWN BY: JGC
 ISSUE DATE: 09-30-05
 SHEET REV.: 08-24-10

FORCE MAIN
 SANITARY SEWER
 S 360TH ST/51ST AVE S
 STA. 228+90.70 TO
 STA. 238+50.33
 PLAN AND PROFILE

05052SS07.DWG
SS07



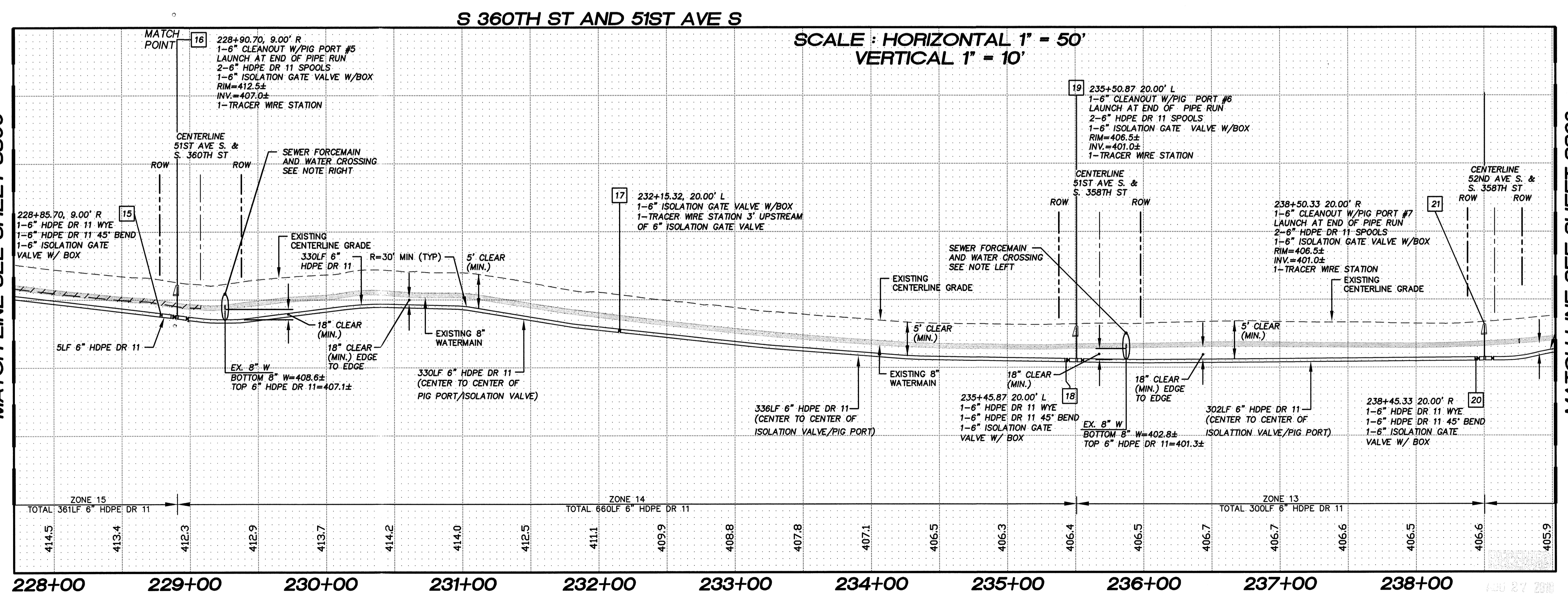
**ALL STUBS 1 1/4" HDPE DR 11
 SANITARY SIDE SEWER STUB**

BLOCK No.	LOT No.	PAD ELEV.	STA.	SIZE	LENGTH	DEPTH AT P.L.	INV. AT P.L.
89	7	410.0	4+05	1-6" HDPE DR 11	50LF	3' (TYP.)	407.3
89	6	409.5	4+15	1-6" HDPE DR 11	50LF	3' (TYP.)	406.8
89	5	409.0	4+85	1-6" HDPE DR 11	50LF	3' (TYP.)	406.3
89	4	408.5	4+95	1-6" HDPE DR 11	50LF	3' (TYP.)	405.8
89	3	408.0	5+65	1-6" HDPE DR 11	50LF	3' (TYP.)	405.3
89	2	408.0	5+75	1-6" HDPE DR 11	50LF	3' (TYP.)	405.3
89	1	408.0	6+25	1-6" HDPE DR 11	50LF	3' (TYP.)	405.3

- 15 1-6" HDPE DR 11 WYE
1-6" HDPE DR 11 45° BEND
1-6" ISOLATION GATE VALVE W/ BOX
- 16 1-6" CLEANOUT W/PIG PORT #5
2-6" HDPE DR 11 SPOOLS
1-6" ISOLATION GATE VALVE W/ BOX
- 17 1-6" ISOLATION GATE VALVE W/BOX
- 18 1-6" HDPE DR 11 WYE
1-6" HDPE DR 11 45° BEND
1-6" ISOLATION GATE VALVE W/ BOX
- 19 1-6" CLEANOUT W/PIG PORT #6
2-6" HDPE DR 11 SPOOLS
1-6" ISOLATION GATE VALVE W/ BOX
- 20 1-6" HDPE DR 11 WYE
1-6" HDPE DR 11 45° BEND
1-6" ISOLATION GATE VALVE W/ BOX
- 21 1-6" CLEANOUT W/PIG PORT #7
2-6" HDPE DR 11 SPOOLS
1-6" ISOLATION GATE VALVE W/ BOX

NOTES:

- THE MINIMUM SEPARATION BETWEEN (PARALLEL PIPELINES) WATER MAIN, WATER SERVICE LINE AND PRESSURE SEWER FACILITIES MUST BE BELOW WATER MAIN OR WATER SERVICE) MUST BE MET, ARE AS FOLLOWS:
HORIZONTAL ≥ 10' MEASURED EDGE TO EDGE VERTICAL ≥ 18", MEASURED EDGE TO EDGE.
- THE MINIMUM SEPARATION BETWEEN (CROSSING PIPELINES) WATER MAIN, WATER SERVICE LINE AND PRESSURE SEWER FACILITIES (MUST BE BELOW WATER MAIN OR WATER SERVICE) MUST BE MET, ARE AS FOLLOWS:
VERTICAL ≥ 18" MEASURED EDGE TO EDGE
- IF THE EXISTING WATER IS AC PIPE, IT SHALL BE REPLACED WITH SAME SIZE DUCTILE IRON PIPE 10 FEET EACH SIDE OF SEWER CROSSING BUT NO LESS THAN 2 FEET INTO BOTH TRENCH WALLS (NO CDF CRADLE ALLOWED).
- LOCATION OF EXISTING UNDERGROUND UTILITIES WAS PROVIDED BY UTILITY LOCATE AND BY AS BUILT RECORDS.. UTILITY PAINT MARKS WERE FIELD SURVEYED BY CES NW INC.
- OTHER UTILITY SEPARATION BETWEEN PRESSURE SEWER FACILITIES MUST BE MET, ARE AS FOLLOWS:
HORIZONTAL ≥ 3' MEASURED EDGE TO EDGE VERTICAL ≥ 6", MEASURED EDGE TO EDGE.
- FOR PARCELS IN PEPPER HILL ESTATES AREAS, EXISTING PARCEL NUMBERS AND LOT NUMBERS WILL BE UPDATED AFTER BOUNDARY LINE ADJUSTMENTS ARE RECORDED.
- ALL CLEANOUTS W/PIG PORTS ARE USED AS TRACER WIRE STATIONS.
- FRAMES AND COVERS FOR CLEANOUTS/PIGPORTS NOT SUBJECT TO VEHICULAR TRAFFIC SHALL BE SET 6" ABOVE FINISHED GRADE AND BE PROTECTED BY VALVE BOX PROTECTIVE PADS.



APPROXIMATE LOCATION EXISTING GAS FIELD VERIFY PRIOR TO CONSTRUCTION. NOTIFY ENGINEER OF ANY CONFLICTS.