

N.W. 1/4, SEC. 26, T. 21 N., R. 4 E., W.M.

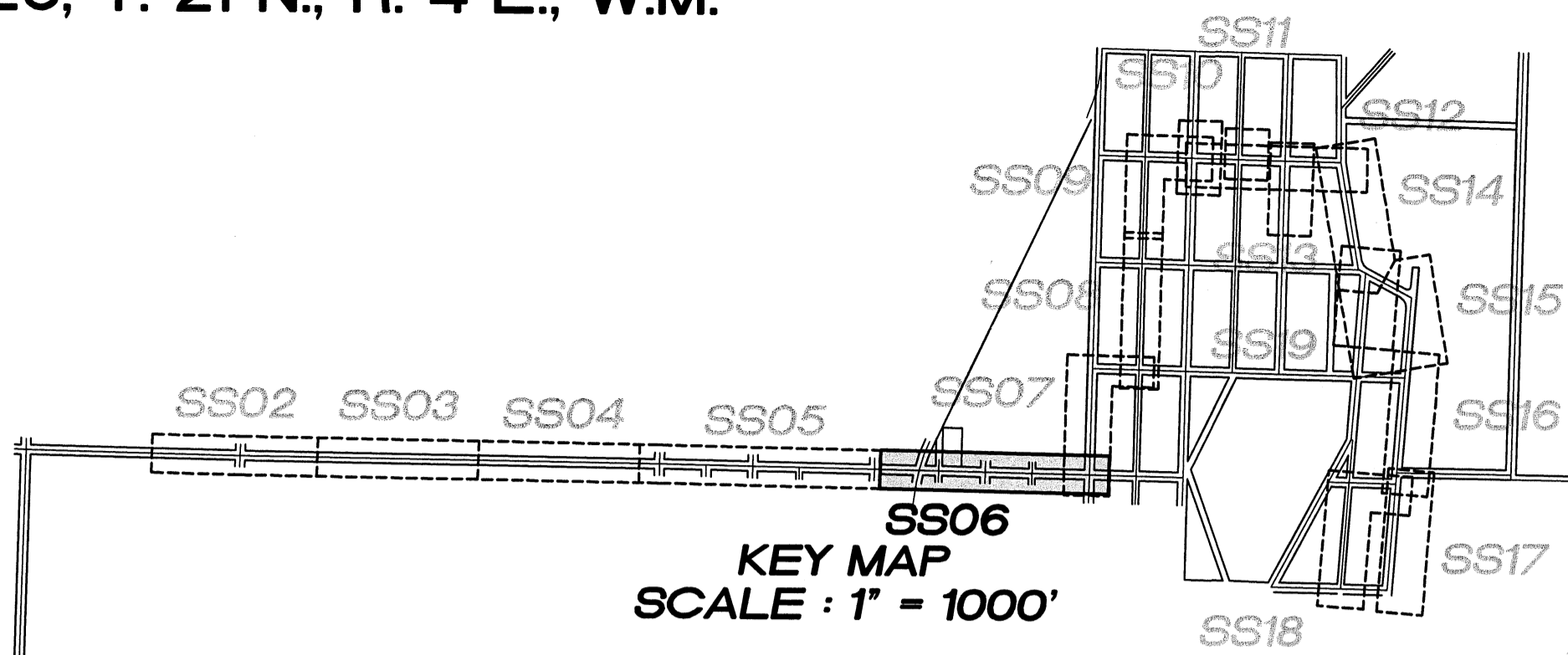
- 12 2-6" ISOLATION GATE VALVE W/BOX
1-6" FORCE MAIN CLEANOUT W/PIG PORT #4
1-6" HDPE DR 11 SPOOL
- 13 1-6" ISOLATION GATE VALVE W/BOX
- 14 1-6" ISOLATION GATE VALVE W/BOX
- 15 1-6" HDPE DR 11 WYE
1-6" HDPE DR 11 45° BEND
1-6" ISOLATION GATE VALVE W/ BOX
- 16 1-6" ISOLATION GATE VALVE W/BOX
1-6" FORCE MAIN CLEANOUT W/PIG PORT #5
1-6" HDPE DR 11 SPOOL

VERTICAL DATUM :

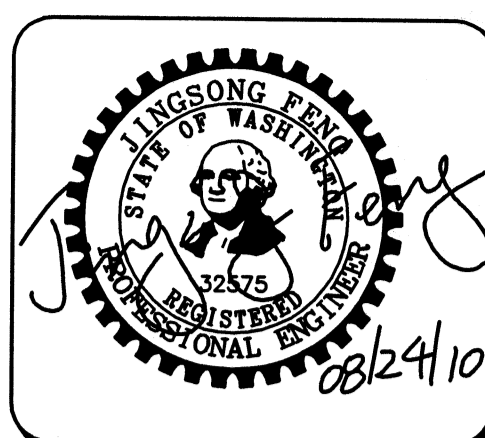
NAVD 88

BENCH MARK :

KING COUNTY SURVEY CONTROL POINT No. 6905.
SW CORNER OF SECTION 27, T 24 N., R 4 E., W.M.,
CONCRETE MONUMENT WITH LEAD AND BRASS TACK,
SET 1.2 FEET BELOW GRADE, IN STANDARD KC MON. CASE.
ELEVATION = 367.06



LAKEHAVEN UTILITY DISTRICT
 0 Water Plan Sewer Plan
 Dated 8/24/10
 APPROVED FOR CONSTRUCTION
 SUBJECT TO CHANGES NOTED
 The District's review is not a check of any dimension or quantities and will not relieve the Developer from responsibility for errors of any sort. No changes shall be made in the plans except by the consent of the District.
 General Manager/District Engineer Date 9/23/10
 This construction plan will expire one year from plan approval date, if construction has not commenced.



15445 53RD AVE S.
SEATTLE, WA 98188
PHONE: (206) 431-7970
FAX: (206) 388-1648
WEB SITE: PACENG.COM

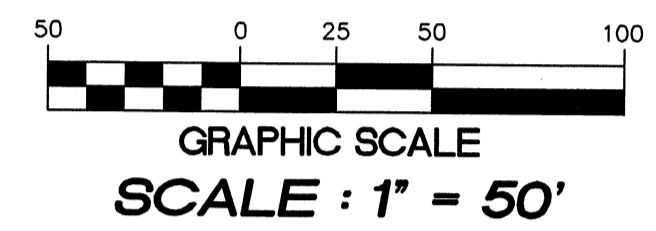
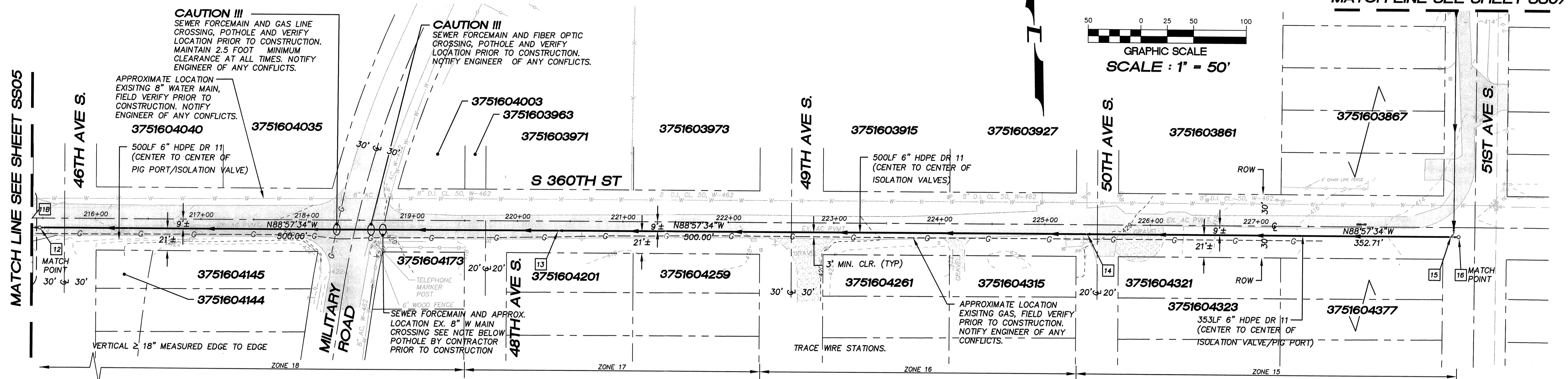
Pacific Engineering Design, LLC
 Civil Engineering and Planning Consultants

LAKEHAVEN UTILITY DISTRICT PROJECT No. 6304025
 PEPPER HILL ESTATES
 KING COUNTY, WA.
 FOR: PACIFIC HOUSING GROUP I, LLC
 1420 5TH AVE, SUITE 2200
 SEATTLE, WA, 98101-5346
 PHONE: (206) 521-5979 FAX: (206) 224-2890

PROJECT NO.: 05052
 DRAWN BY: JGC
 ISSUE DATE: 09-30-05
 SHEET REV.: 08-24-10

FORCE MAIN SANITARY SEWER S 360TH ST STA. 215+47.15 TO STA. 228+90.70 PLAN AND PROFILE

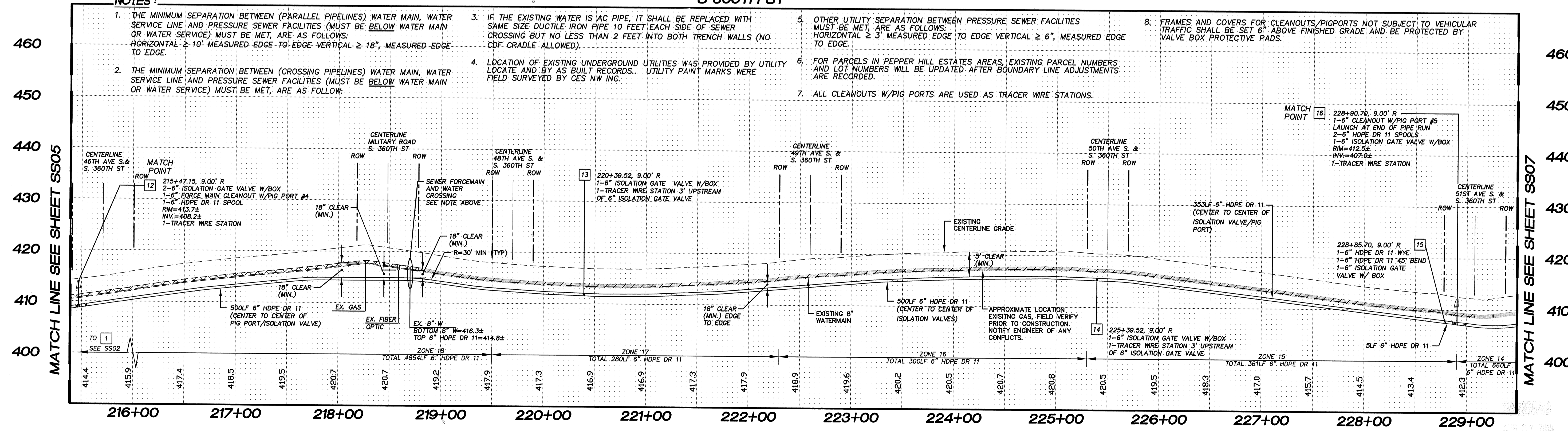
05052SS06.DWG
SS06



SCALE : HORIZONTAL 1" = 50'
 VERTICAL 1" = 10'

NOTES :

- THE MINIMUM SEPARATION BETWEEN (PARALLEL PIPELINES) WATER MAIN, WATER SERVICE LINE AND PRESSURE SEWER FACILITIES (MUST BE BELOW WATER MAIN OR WATER SERVICE) MUST BE MET, ARE AS FOLLOWS:
HORIZONTAL ≥ 10' MEASURED EDGE TO EDGE VERTICAL ≥ 18", MEASURED EDGE TO EDGE.
- THE MINIMUM SEPARATION BETWEEN (CROSSING PIPELINES) WATER MAIN, WATER SERVICE LINE AND PRESSURE SEWER FACILITIES (MUST BE BELOW WATER MAIN OR WATER SERVICE) MUST BE MET, ARE AS FOLLOWS:
- IF THE EXISTING WATER IS AC PIPE, IT SHALL BE REPLACED WITH SAME SIZE DUCTILE IRON PIPE 10 FEET EACH SIDE OF SEWER CROSSING BUT NO LESS THAN 2 FEET INTO BOTH TRENCH WALLS (NO CDF GRADLE ALLOWED).
- LOCATION OF EXISTING UNDERGROUND UTILITIES WAS PROVIDED BY UTILITY LOCATE AND BY AS BUILT RECORDS. UTILITY PAINT MARKS WERE FIELD SURVEYED BY CES NW INC.
- OTHER UTILITY SEPARATION BETWEEN PRESSURE SEWER FACILITIES MUST BE MET, ARE AS FOLLOWS:
HORIZONTAL ≥ 3' MEASURED EDGE TO EDGE VERTICAL ≥ 6", MEASURED EDGE TO EDGE.
- FOR PARCELS IN PEPPER HILL ESTATES AREAS, EXISTING PARCEL NUMBERS AND LOT NUMBERS WILL BE UPDATED AFTER BOUNDARY LINE ADJUSTMENTS ARE RECORDED.
- ALL CLEANOUTS W/PIG PORTS ARE USED AS TRACER WIRE STATIONS.
- FRAMES AND COVERS FOR CLEANOUTS/PIGPORTS NOT SUBJECT TO VEHICULAR TRAFFIC SHALL BE SET 6" ABOVE FINISHED GRADE AND BE PROTECTED BY VALVE BOX PROTECTIVE PADS.



05052SS06.DWG
SS06