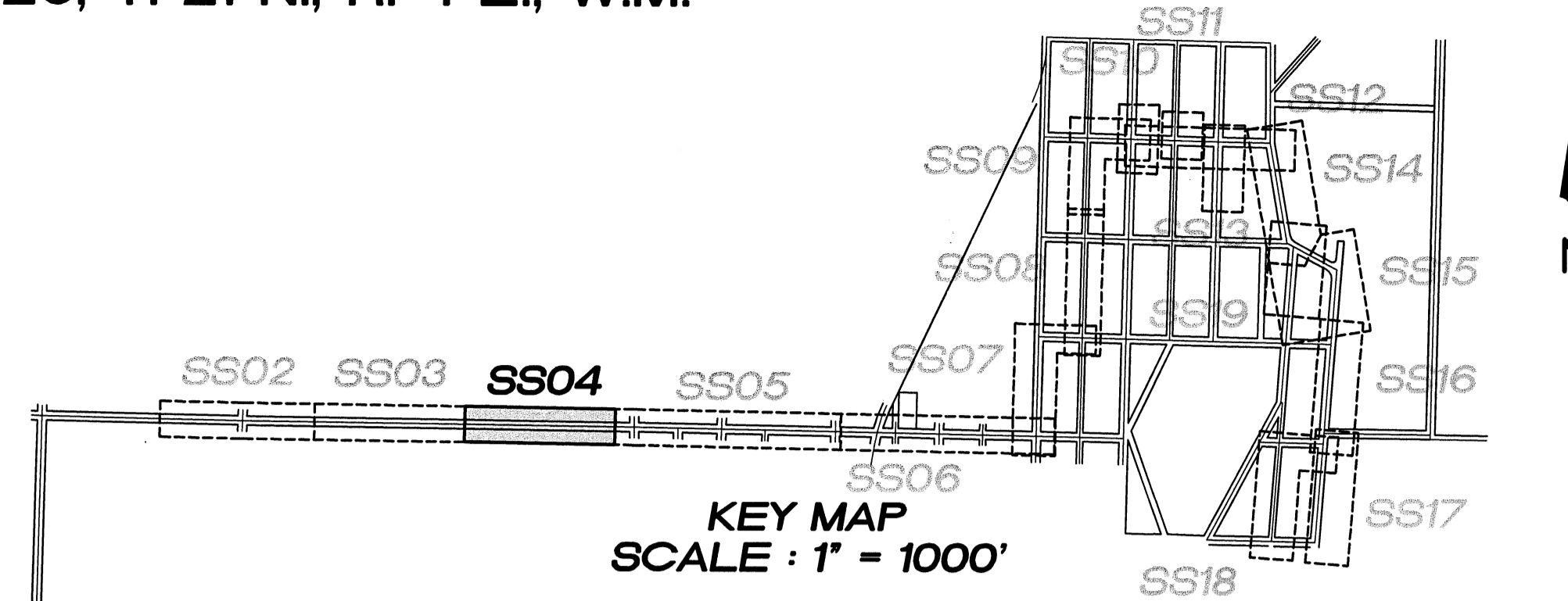


- 7 1-6" ISOLATION GATE VALVE W/BOX
- 8 1-6" ISOLATION GATE VALVE W/BOX
- 9 2-6" ISOLATION GATE VALVE W/ BOX
1-6" FORCE MAIN CLEANOUT W/PIG PORT #3
1-6" HDPE DR 11 SPOOL

N.W. 1/4, SEC. 26, T. 21 N., R. 4 E., W.M.

VERTICAL DATUM :
NAVD 88

BENCH MARK :
KING COUNTY SURVEY CONTROL POINT No. 6905,
SW CORNER OF SECTION 27, T 24 N, R 4 E, W.M.,
CONCRETE MONUMENT WITH LEAD AND BRASS TACK,
SET 1.2 FEET BELOW GRADE, IN STANDARD KC MON. CASE.
ELEVATION = 367.06



LAKEHAVEN UTILITY DISTRICT

0 Water Plan **8/24/10** Sewer Plan
Dated **8/24/10**

APPROVED FOR CONSTRUCTION
SUBJECT TO CHANGES NOTED

The District's review is not a check of any dimension or quantities and will not relieve the Developer from responsibility for errors of any sort. No changes shall be made in the plans except by the consent of the District.

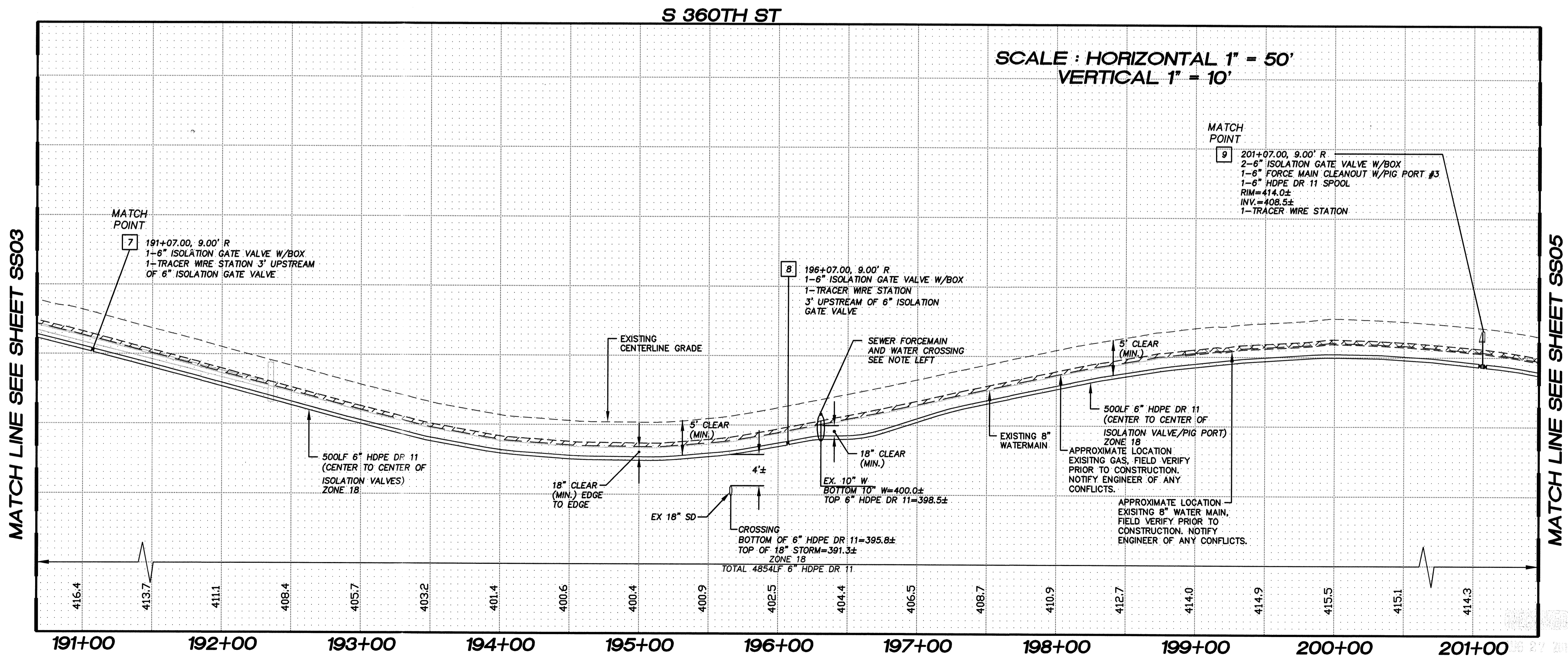
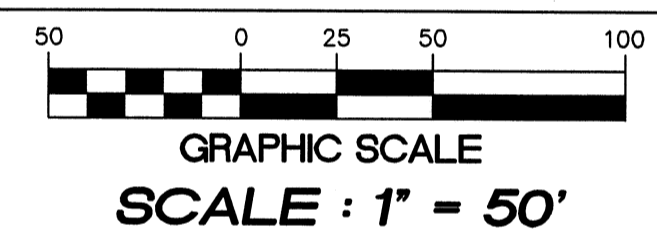
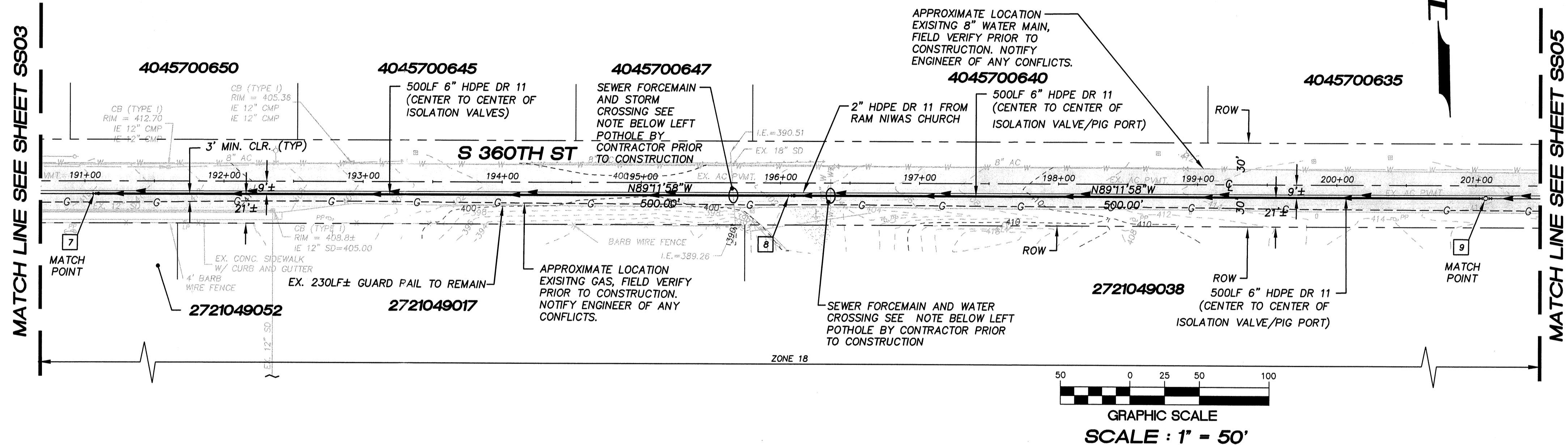
[Signature] 9/23/10
General Manager/District Engineer Date

This construction plan will expire one year from plan approval date, if construction has not commenced.



15445 53RD AVE. S.
SEATTLE, WA 98188
PHONE: (206) 431-7970
FAX: (206) 388-1648
WEB SITE: PACENG.COM

Pacific Engineering Design, LLC
Civil Engineering and Planning Consultants



- NOTES :**
- THE MINIMUM SEPARATION BETWEEN (PARALLEL PIPELINES) WATER MAIN, WATER SERVICE LINE AND PRESSURE SEWER FACILITIES (MUST BE BELOW WATER MAIN OR WATER SERVICE) MUST BE MET, ARE AS FOLLOWS: HORIZONTAL >=10' MEASURED EDGE TO EDGE VERTICAL >=18", MEASURED EDGE TO EDGE.
 - THE MINIMUM SEPARATION BETWEEN (CROSSING PIPELINES) WATER MAIN, WATER SERVICE LINE AND PRESSURE SEWER FACILITIES (MUST BE BELOW WATER MAIN OR WATER SERVICE) MUST BE MET, ARE AS FOLLOWS: VERTICAL >=18" MEASURED EDGE TO EDGE.
 - IF THE EXISTING WATER IS AC PIPE, IT SHALL BE REPLACED WITH SAME SIZE DUCTILE IRON PIPE 10 FEET EACH SIDE OF SEWER CROSSING BUT NO LESS THAN 2 FEET INTO BOTH TRENCH WALLS (NO CDF CRADLE ALLOWED).
 - LOCATION OF EXISTING UNDERGROUND UTILITIES WAS PROVIDED BY UTILITY LOCATE AND BY AS BUILT RECORDS. UTILITY PAINT MARKS WERE FIELD SURVEYED BY CES NW INC.
 - OTHER UTILITY SEPARATION BETWEEN PRESSURE SEWER FACILITIES MUST BE MET, ARE AS FOLLOWS: HORIZONTAL >=3' MEASURED EDGE TO EDGE VERTICAL >=6", MEASURED EDGE TO EDGE.
 - FOR PARCELS IN PEPPER HILL ESTATES AREAS, EXISTING PARCEL NUMBERS AND LOT NUMBERS WILL BE UPDATED AFTER BOUNDARY LINE ADJUSTMENTS ARE RECORDED.
 - ALL CLEANOUTS W/PIG PORTS ARE USED AS TRACE WIRE STATIONS.
 - FRAMES AND COVERS FOR CLEANOUTS/PIGPORTS NOT SUBJECT TO VEHICULAR TRAFFIC SHALL BE SET 6" ABOVE FINISHED GRADE AND BE PROTECTED BY VALVE BOX PROTECTIVE PADS.
 - INSTALL APPROXIMATELY 4300 LF± OF 2" HDPE DR11 FORCEMAIN AT THE SAME TRENCH OF THE 6" HDPE DR11 FORCEMAIN FROM SSMH #10 (S-1727) TO THE RAM NIWAS CHURCH. HORIZONTAL SEPARATION BETWEEN 2" AND 6" FORCEMAINS SHOULD BE 2'± AND AS CONSISTENT AS POSSIBLE. PIPE CROWN ELEVATIONS SHOULD MATCH. TRACER WIRE AND TRACER WIRE STATIONS ONLY APPLY TO THE 6" FORCEMAIN.

LAKEHAVEN UTILITY DISTRICT PROJECT No. 6904025
PEPPER HILL ESTATES

FOR:
PACIFIC HOUSING GROUP I, LLC
1420 5TH AVE, SUITE 2200
SEATTLE, WA, 98101-8346
PHONE: (206) 521-9979, FAX: (206) 224-2880

PROJECT NO.: 05052
DRAWN BY: JGC
ISSUE DATE: 09-30-05
SHEET REV.: 08-24-10

FORCE MAIN
SANITARY SEWER
S 360TH ST
STA. 191+07.00 TO
STA. 201+07.00
PLAN AND PROFILE

05052SS04.DWG
SS04