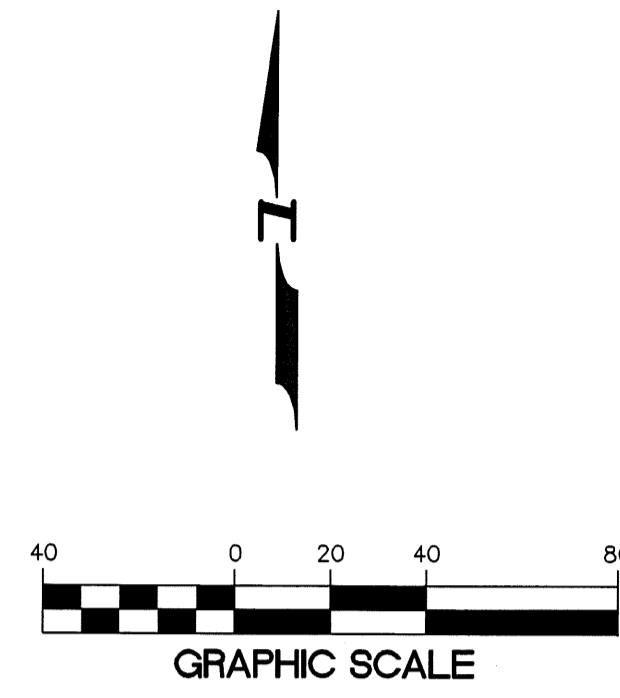
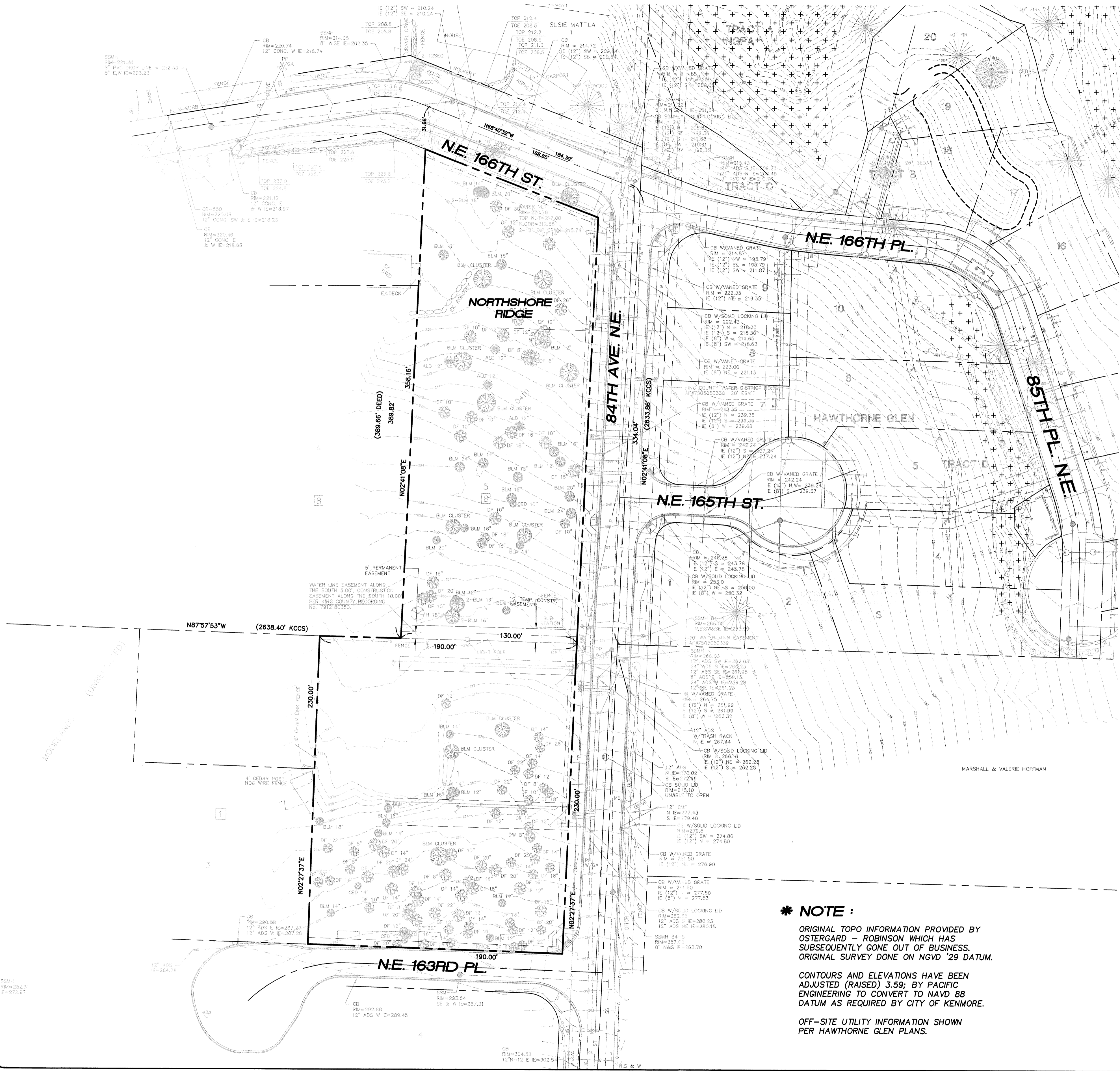


# A PORTION OF THE SE1/4, SE1/4, SEC 12, NE1/4, NE1/4, SEC 13, TWP 26N, RGE 4E, W.M. KING COUNTY



SCALE : 1" = 40'

**BENCH MARK**  
 TOP OF CONCRETE MON IN CASE AT INTERSECTION  
 OF NE 155TH PL AND 84TH AVE. NE (E1/4, SEC13)  
 ELEV = 465.90' NGVD '29  
 465.90' + 3.59  
 ELEV = 469.49' NAVD 88

**BASIS OF BEARING**  
 KING COUNTY CONTROL SURVEY

**LEGEND**

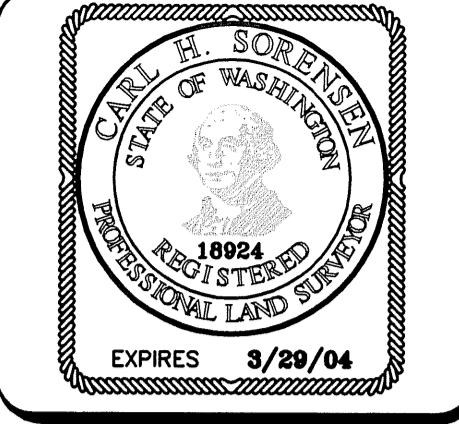
⊙	SANITARY SEWER MANHOLE
⊕	STORM DRAIN MANHOLE
□	CATCH BASIN
⊙	GUY POLE
⊕	GUY ANCHOR
⊕	WATER METER
WV	WATER VALVE
⊕	FIRE HYDRANT
⊕	UTILITY POLE
⊕	ELECTRICAL VAULT
⊕	LITE POLE
SP	SOIL PIT
EP	EDGE OF PAVEMENT
R/W	RIGHT-OF-WAY
○	FOUND IRON PIPE OR REBAR
⊕	FOUND MONUMENT (AS NOTED)
+	FOUND 1/4 OR SECTION CORNER AS NOTED.
—	EDGE OF GRAVEL
△	SPOT ELEVATION
△	O.R.A. CONTROL POINT
× DF12	TREE TYPE & SIZE (DOUG FIR 12" TYP)

ALD = ALDER  
 BLM = BIG LEAF MAPLE  
 CED = CEDAR  
 DF = DOUG FIR  
 DW = DOGWOOD  
 CHRY = CHERRY  
 CA = CRAB APPLE  
 F = FIR  
 H = HEMLOCK  
 HN = HAZEL NUT  
 MAD = MADRONA

**\* NOTE :**  
 ORIGINAL TOPO INFORMATION PROVIDED BY  
 OSTERGARD - ROBINSON WHICH HAS  
 SUBSEQUENTLY GONE OUT OF BUSINESS.  
 ORIGINAL SURVEY DONE ON NGVD '29 DATUM.

CONTOURS AND ELEVATIONS HAVE BEEN  
 ADJUSTED (RAISED) 3.59; BY PACIFIC  
 ENGINEERING TO CONVERT TO NAVD 88  
 DATUM AS REQUIRED BY CITY OF KENMORE.

OFF-SITE UTILITY INFORMATION SHOWN  
 PER HAWTHORNE GLEN PLANS.



4180 LIND AVE. S.W.  
 RENTON, WA 98055  
 PHONE: (425) 251-8811  
 FAX: (425) 251-8880  
 WEB SITE: PACENG.COM

**Pacific Engineering Design, LLC**  
 Civil Engineering and Planning Consultants

**NORTHSHORE RIDGE**  
 KENMORE, WA

FOR:  
 NORTHSHORE UTILITY DISTRICT  
 P.O. BOX 62489  
 KENMORE, WA 98028-0489  
 PHONE: (425) 398-4400  
 FAX: (425) 398-4430

PROJECT NO.: **04094**  
 DRAWN BY: **TLR**  
 ISSUE DATE: **01-28-05**  
 SHEET REV.: **07-31-06**

**EXISTING CONDITIONS**

04094E001-C10.DWG  
**C10**  
 SHEET 10 OF 10