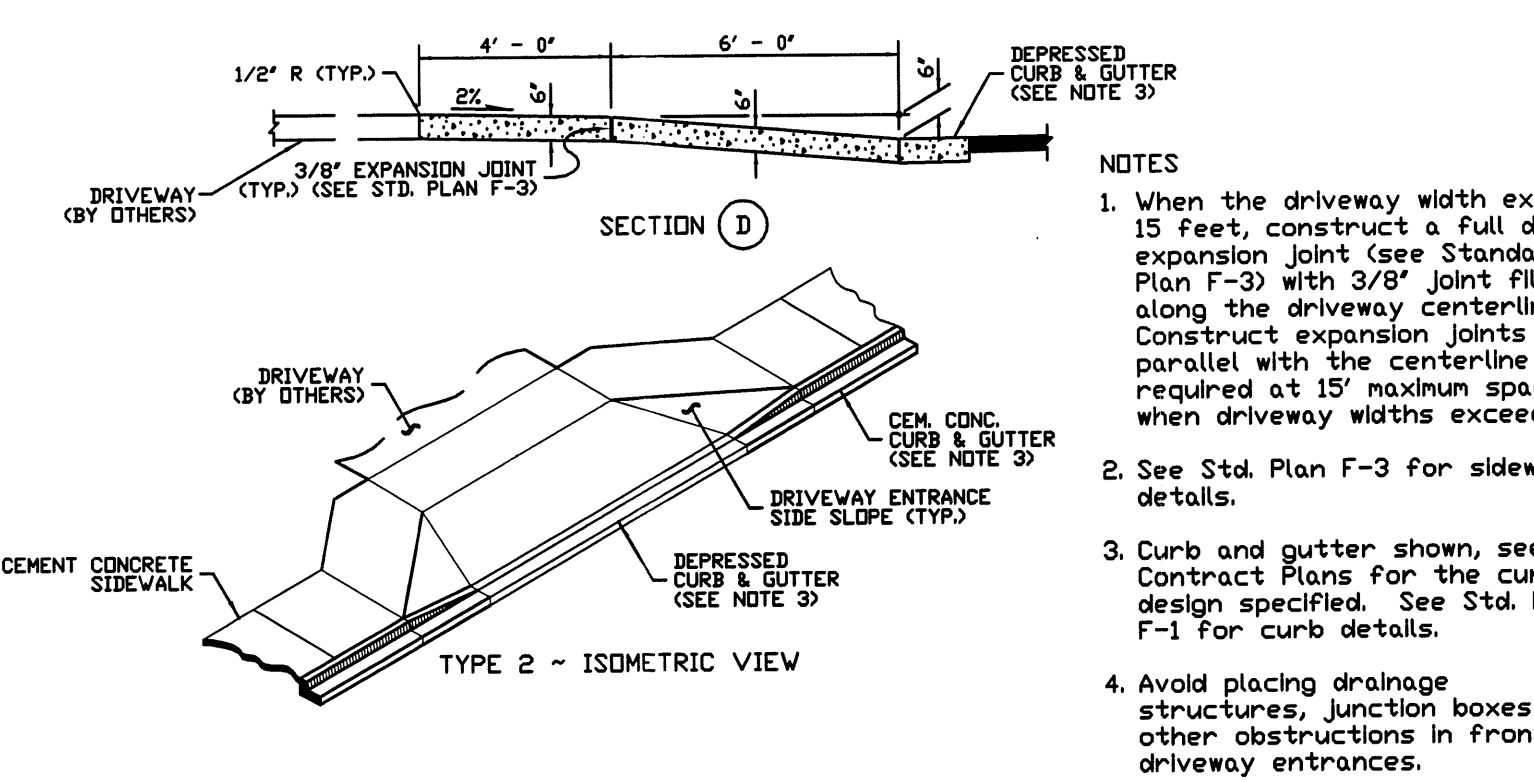
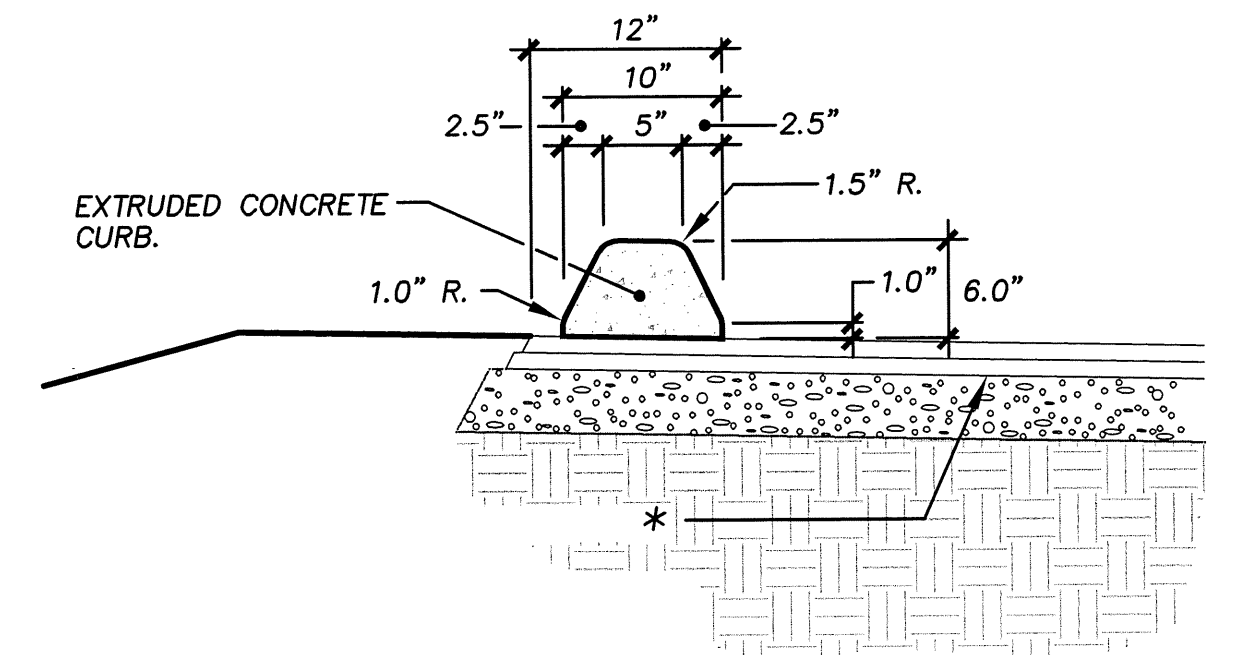
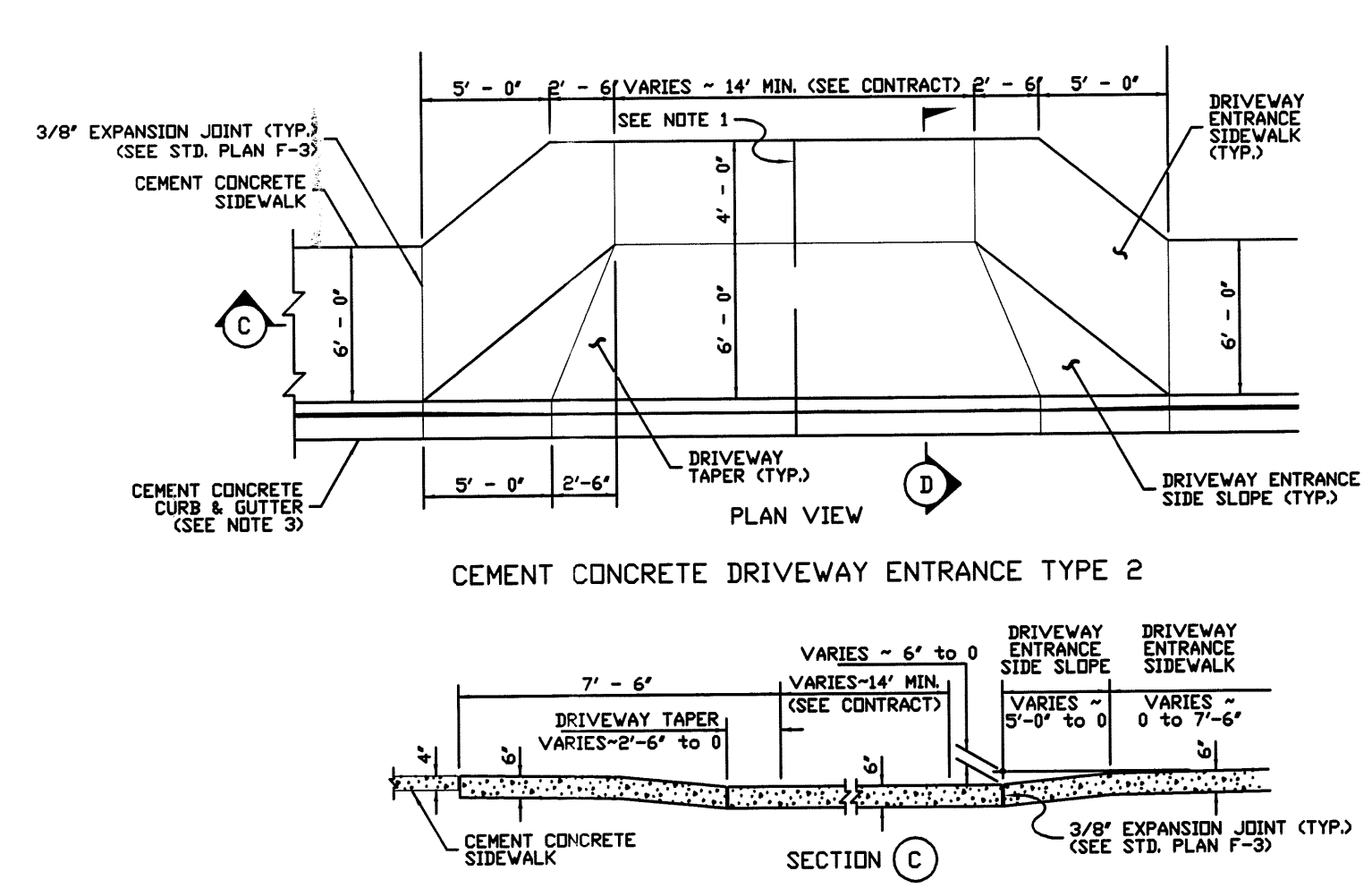
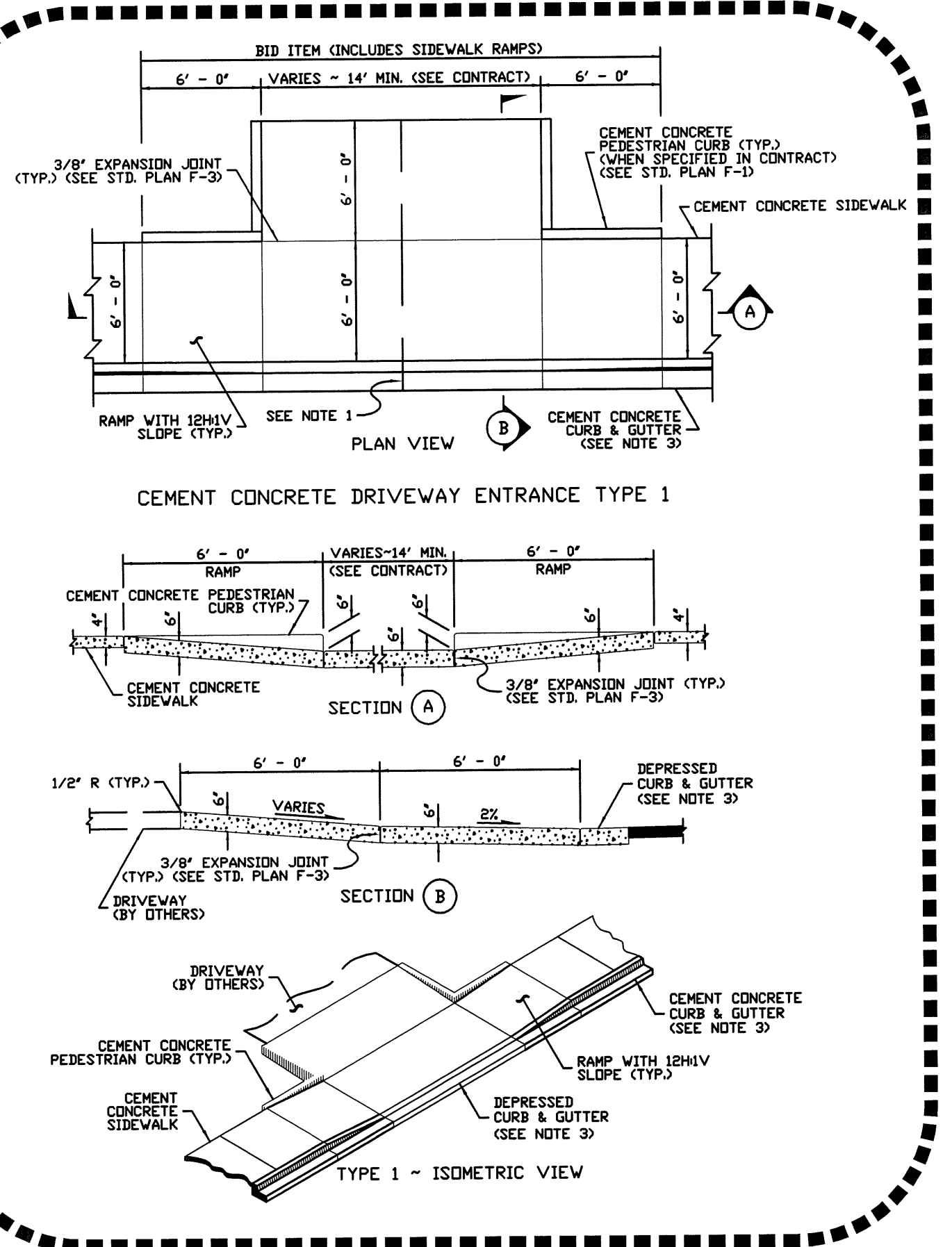


A PORTION OF THE SE1/4, SE1/4, SEC 12, NE1/4, NE1/4, SEC 13, TWP 26N, RGE 4E, W.M. KING COUNTY

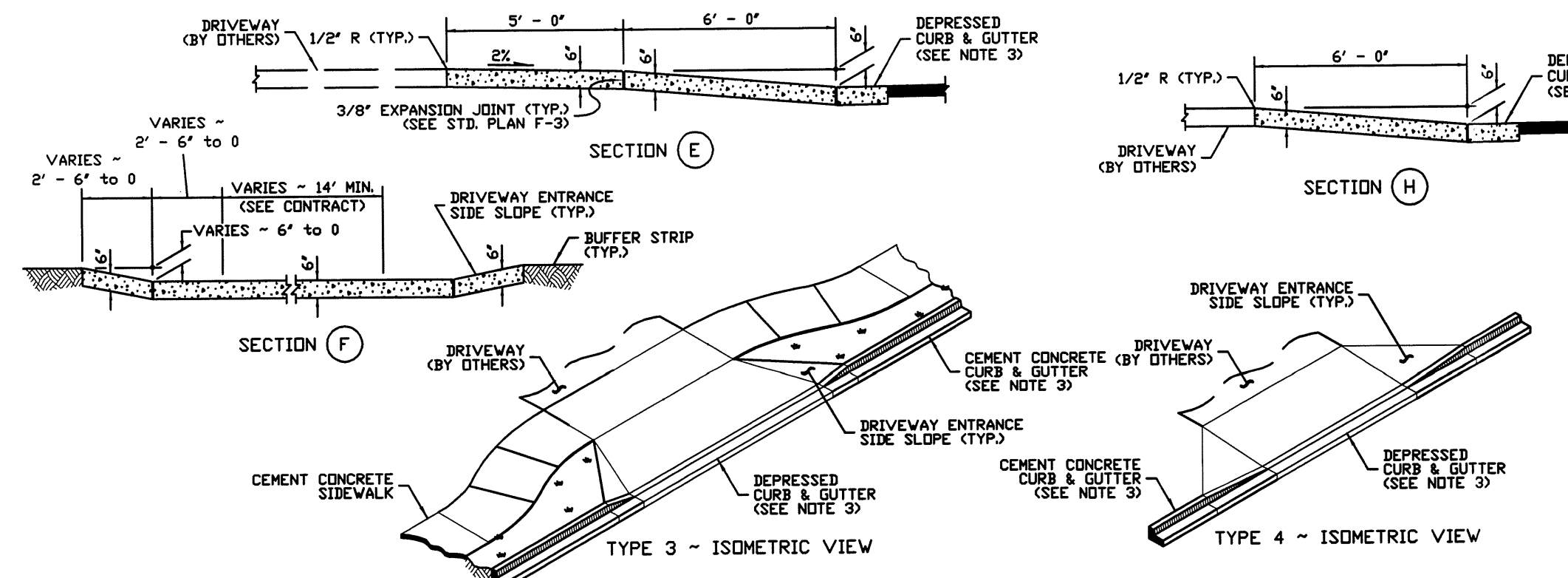
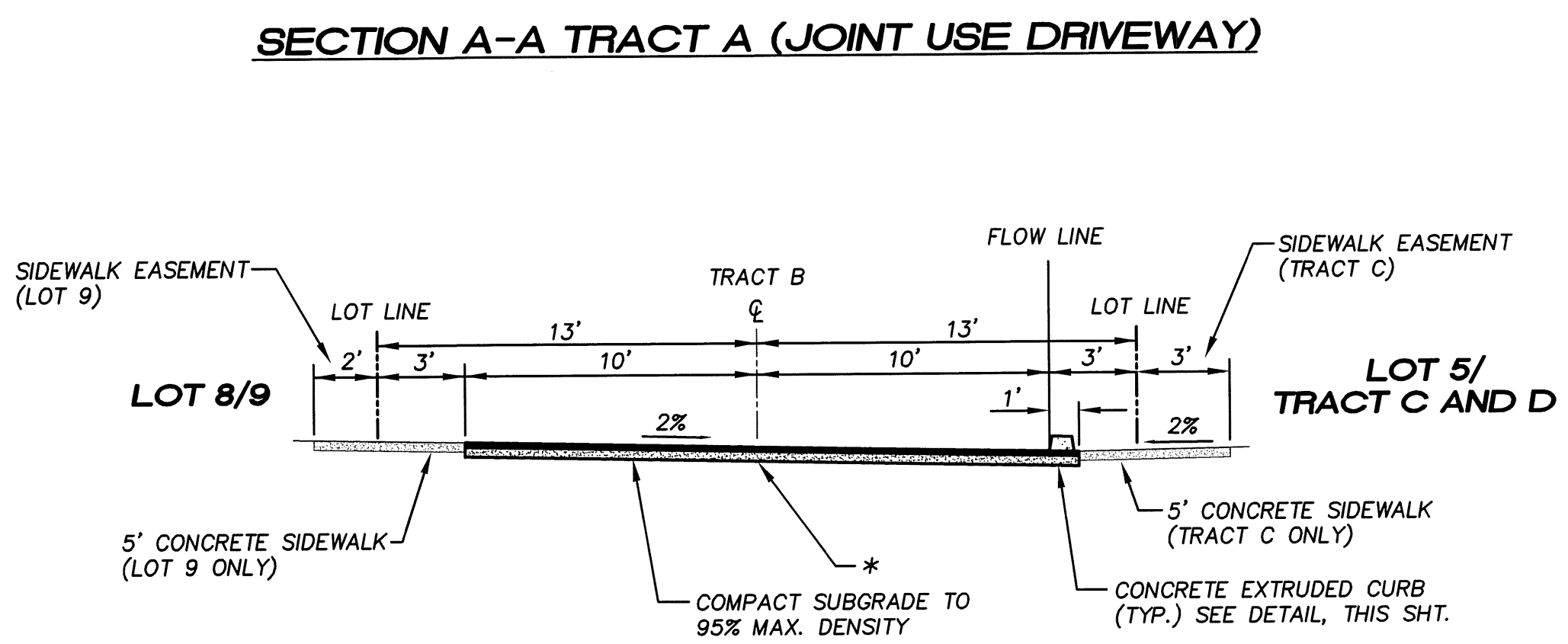
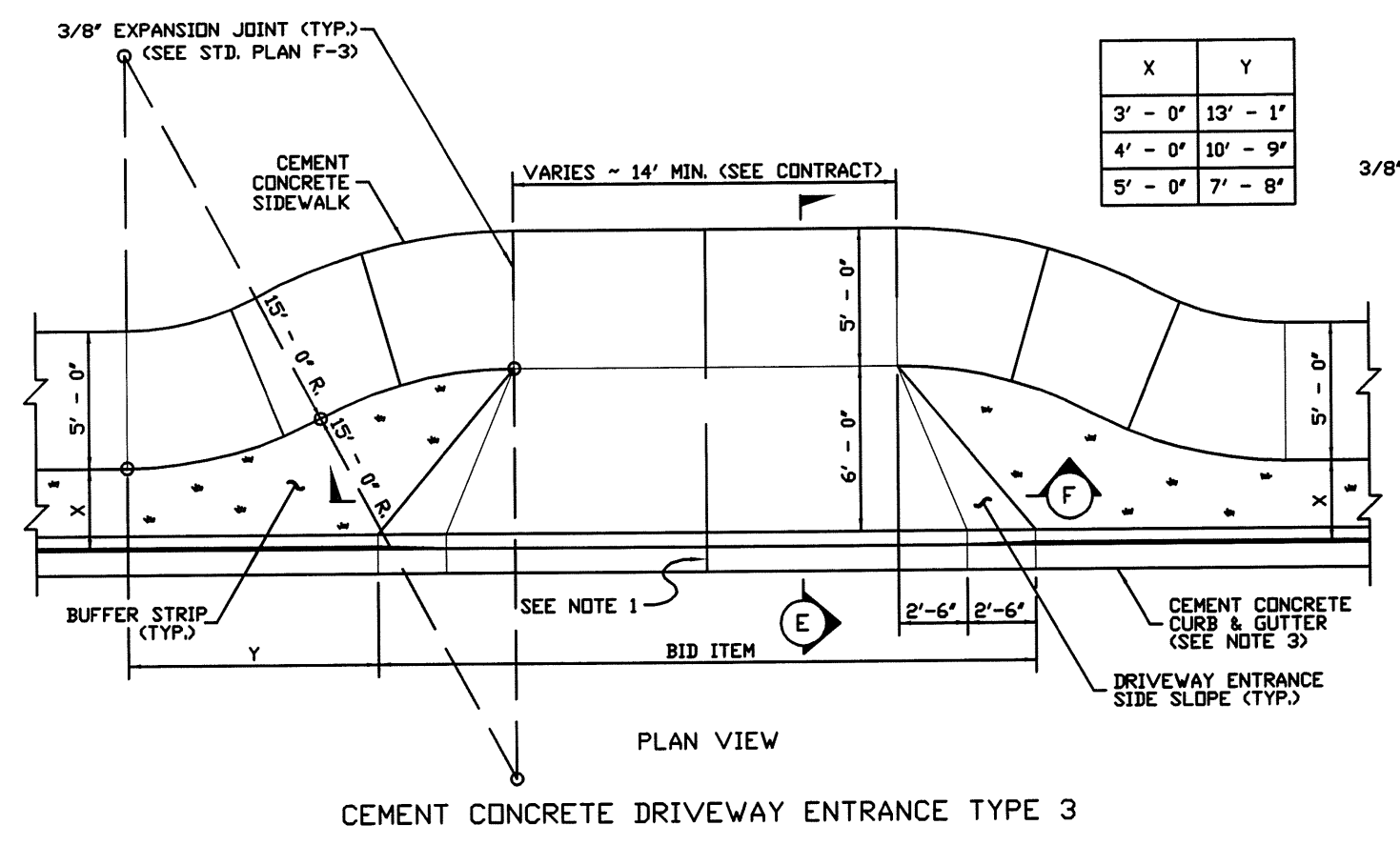
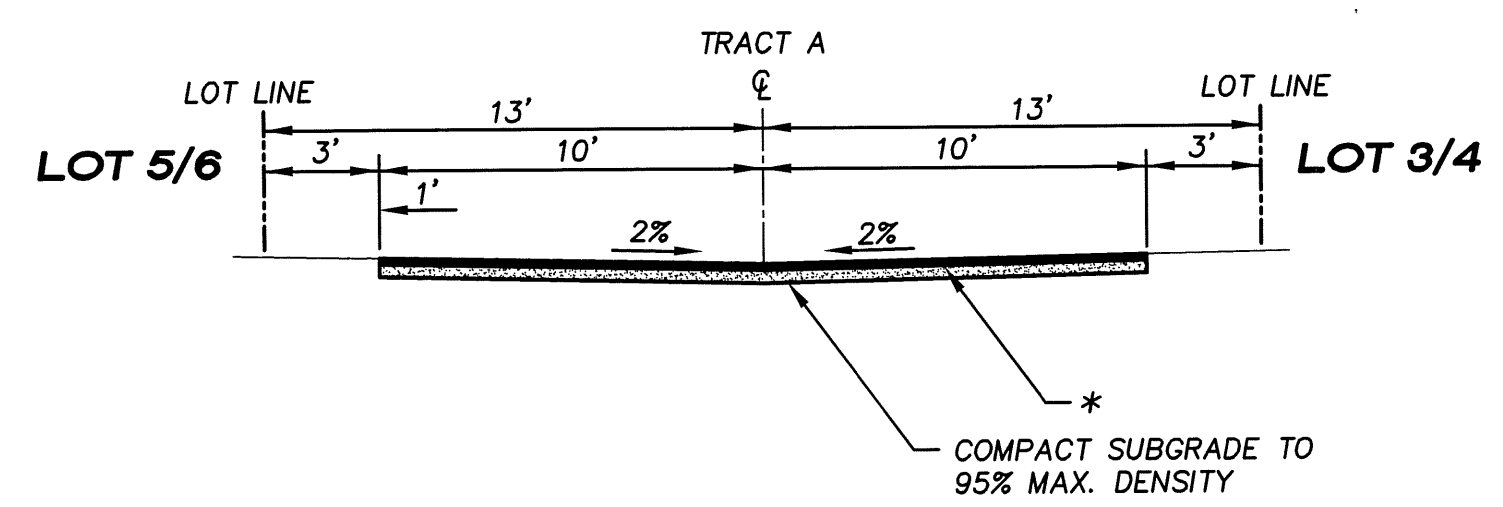


15445 53RD AVE S.
SEATTLE, WA., 98188
PHONE: (206) 431-7970
FAX: (206) 388-1648
WEB SITE: PACENG.COM

Pacific Engineering Design, LLC
Civil Engineering and Planning Consultants



- NOTES**
- When the driveway width exceeds 15 feet, construct a full depth expansion joint (see Standard Plan F-3) with 3/8" joint filler along the driveway centerline. Construct expansion joints parallel with the centerline as required at 15' maximum spacing when driveway widths exceed 30'.
 - See Std. Plan F-3 for sidewalk details.
 - Curb and gutter shown, see the Contract Plans for the curb design specified. See Std. Plan F-1 for curb details.
 - Avoid placing drainage structures, junction boxes or other obstructions in front of driveway entrances.



NOTE:
WSDOT DRIVEWAY APPROACH DETAIL SHOWS 6' WIDE SIDEWALKS. PROJECT SPECIFIES 5' WIDE SIDEWALKS. SEE PLANS.

DRIVEWAY APRON DETAILS
N.T.S.

NORTHSHORE RIDGE
KENMORE, WA

FOR: NORTHSHORE UTILITY DISTRICT
P.O. BOX 82489
KENMORE, WA, 98028-0489
PHONE: (425) 398-4400
FAX: (425) 398-4430

PROJECT NO.: 04094
DRAWN BY: TLR
ISSUE DATE: 01-26-05
SHEET REV.: 07-31-06

DETAILS

04094T02-C08.DWG
C08
SHEET 8 OF 10