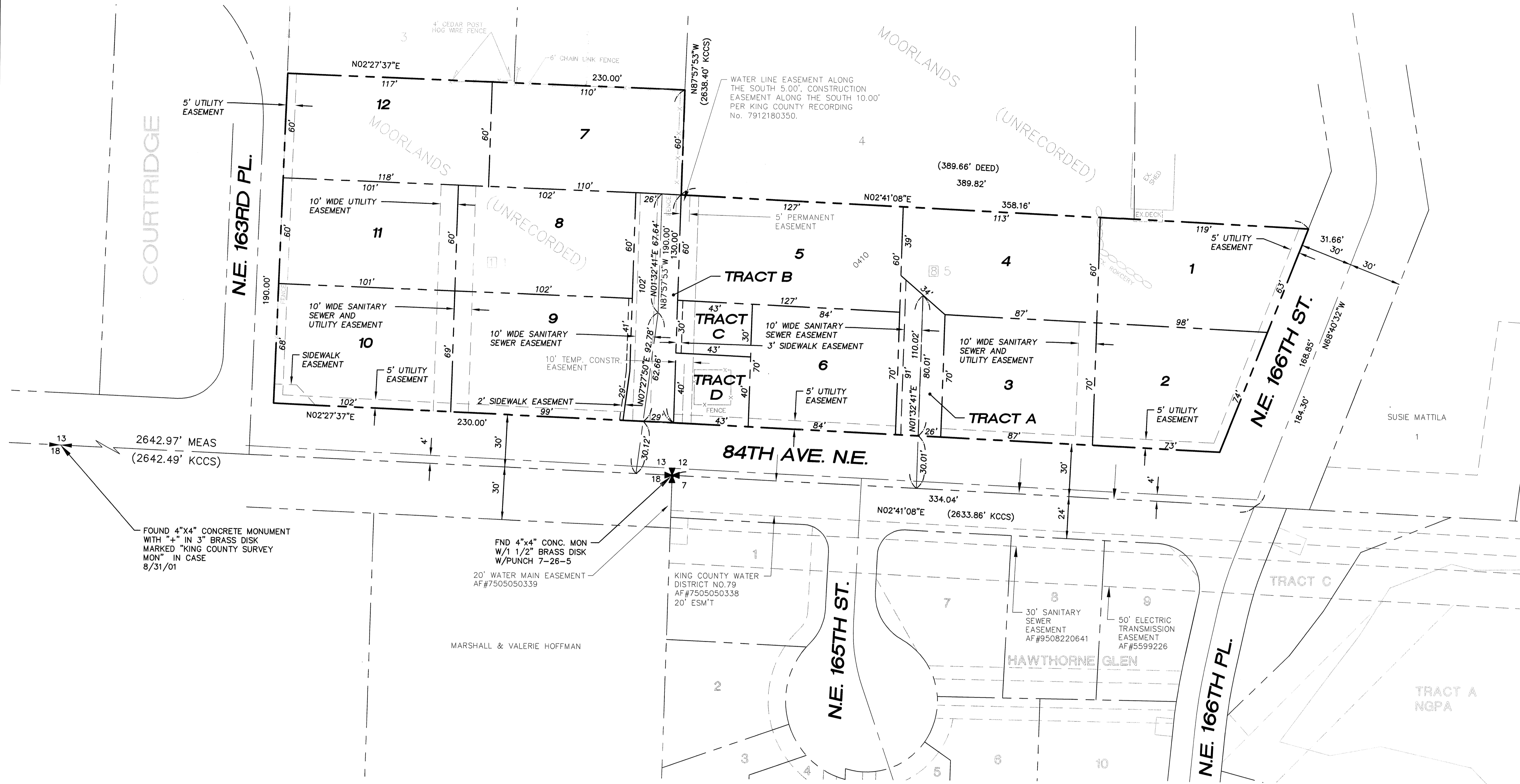


A PORTION OF THE SE1/4, SE1/4, SEC 12, NE1/4, NE1/4, SEC 13, TWP 26N, RGE 4E, W.M. KING COUNTY



COURTRIDGE

NE. 163RD PL.

84TH AVE. N.E.

NE. 165TH ST.

NE. 166TH PL.

NE. 166TH ST.

FOUND 4"x4" CONCRETE MONUMENT WITH "+" IN 3" BRASS DISK MARKED "KING COUNTY SURVEY MON" IN CASE 8/31/01

FND 4"x4" CONC. MON W/1 1/2" BRASS DISK W/PUNCH 7-26-5
20' WATER MAIN EASEMENT AF#7505050339

KING COUNTY WATER DISTRICT NO.79 AF#7505050338 20' ESM'T

MARSHALL & VALERIE HOFFMAN

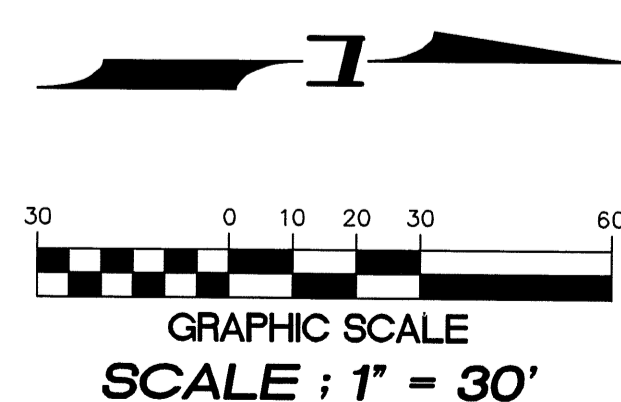
WATER LINE EASEMENT ALONG THE SOUTH 5.00', CONSTRUCTION EASEMENT ALONG THE SOUTH 10.00' PER KING COUNTY RECORDING No. 7912180350.

(389.66' DEED) 389.82'

(UNRECORDED)

BENCHMARK
TOP OF CONCRETE MON IN CASE AT INTERSECTION OF NE 155TH PL AND 84TH AVE. NE (E1/4, SEC13)
ELEV = 465.90' NGVD '29
465.90' + 3.59
ELEV = 469.49' NAVD 88

BASIS OF BEARING
KING COUNTY CONTROL SURVEY



15445 53RD AVE S.
SEATTLE, WA, 98188
PHONE: (206) 491-7970
FAX: (206) 388-1648
WEB SITE: PACENG.COM

Pacific Engineering Design, LLC

Civil Engineering and Planning Consultants

NORTHSHORE RIDGE
KENMORE, WA

FOR:
NORTHSHORE UTILITY DISTRICT
P.O. BOX 82480
KENMORE, WA 98028-0489
PHONE: (425) 398-4400
FAX: (425) 398-4430

PROJECT NO.: **04094**
DRAWN BY: **JGC**
ISSUE DATE: **01-28-05**
SHEET REV.: **07-31-06**

HORIZONTAL CONTROL PLAN

04094HC01-C03.DWG
C03
SHEET 3 OF 10